



ELESA original design CFSQ. / CFM.

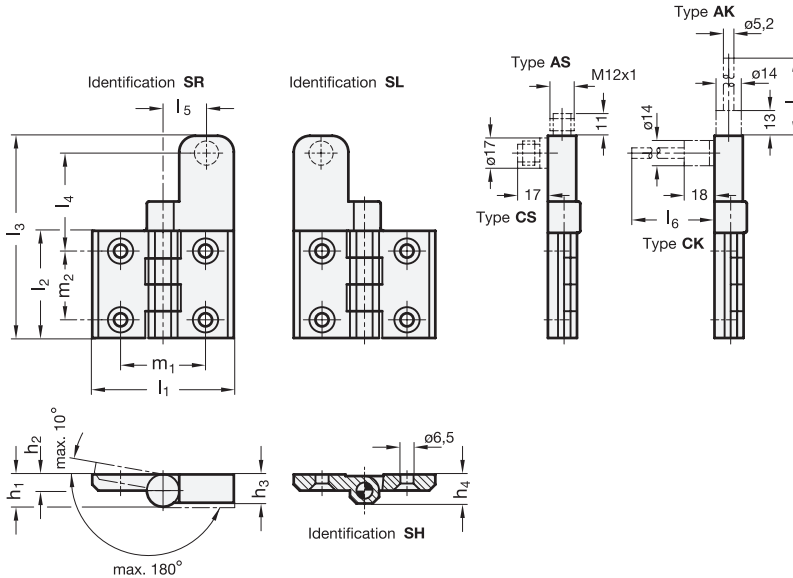


3 Identification

- SH** Bores for countersunk screw, without switch
- SL** Bores for countersunk screw, switch left
- SR** Bores for countersunk screw, switch right

4 Type

- AS** Connector plug at the top
- CS** Connector plug at the back
- AK** Cable at the top
- CK** Cable from the back



1

2

5

l₁	l₂		h₁	h₂	h₃	h₄	l₃	l₄	l₅	l₆	Cable length in meter, type AK / CK	m₁	m₂
70	53	GN 239.4 GN 239.3	16	8	16	14,5	110	51,5	22,5	2	5	45	34

Specification

- Plastic (Polyamide PA)
 - glass fibre reinforced
 - black, matt
- Pin
 - Stainless Steel AISI 303
- *Plastic characteristics* → Page XYZ
- **RoHS compliant**

Accessory

- Cable with connection coupling → Page XYZ
 - 4-pole, 5 or 10 meter long:
 - GN 330-M12x1-4-G-5
 - GN 330-M12x1-4-G-10

On request

- Hinge with operation angle > 0°

Information

Hinges GN 239.4 with integrated two-way switch are suitable for detecting the status of doors, covers and guards on machines and equipment. Opening the door will activate the switching contact, allowing changes in the door status to be detected electrically depending on the wiring of the contacts (NC or NO).

The hinges with their integrated two-way switch are a compact, tamper-proof and easy to install unit, featuring an ultrasound-welded enclosure.

The GN 239.3 hinges without switch have the same design and serve as auxiliary hinge, e.g. for large doors requiring several hinges.

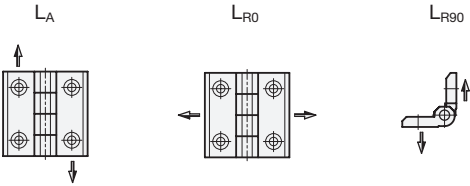
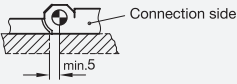
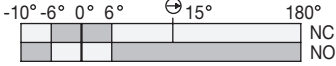
Operating instructions containing other important technical information are included with every hinge.

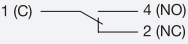
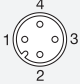
see also...


- *Protection class IP explanations* → Page XYZ

Hinge with switch GN 239.4-70-53-SL-AK-5	1	l₁
	2	l₂
	3	Identification
	4	Type
	5	l₆

Hinge without switch GN 239.3-70-60-SH	1	l₁
	2	l₂
	3	Identification

Mechanical features	
Maximum load Information without safety factor Examples of calculation → see operating instruction	
	Load F in N 2100 2800 1300
Fixing	Types SH, SL und SR with countersunk for countersunk screws e.g. DIN 7991 Mounting information 
Recommended torque	5 Nm (Screws M6)
Protection class	IP67
Switching principle, contact opening	Changeover contact, with positive opening
Contact material	Silver alloy Ag 90 Ni 10
Operating travel diagram (scheme)	The switching points are fix at 6°. By reaching the lifespan, it can rise up to 9°. → see operating instruction 
Maximum operating frequency	1200 / hour
Mechanical life span	10 ⁶ operating cycles
Actuating speed	min. 2° / second, max. 90° / second

Electrical and safety features	
Utilization category	DC 13: 24 Vdc / 4A or 127 Vdc / 0,3A AC 15: 220 Vac / 4A or 440 Vac / 3A acc. to EN 60947-5-2 acc. to EN 60947-5-1
Contact termination 4-pole plug M12 or cable with 2 m or 5 m length	  1 - blue 4 - black 2 - grey
Pin and cable assignment	
Type of cable	UL/CSA STYLE 2587 3X AWG 22
Short-circuit current	1000 A
Rated insulation voltage	250 V
Short-circuit protection	6 A, 500 V, Typ gl
Ambient temperature	- 20 ° C ... + 80 ° C
Degree of pollution, external	3
Mission time (T_M)	20 years
Number of cycles (B10 d)	2 000 000

Approvals, Conformities	
Low-voltage switchgear and controlgear CE declaration	 EN 60947-1-5 : 2003 + A1/2009

Other important details and hints are given in the operating instructions for GN 239.4 hinges which are included with every hinge and which are also available as PDF downloads from „www.ganter-griff.com“ under ‚Service‘.

The hinges with switch must be mounted and commissioned by qualified technical personnel in compliance with the details given in the operating instructions and with the national and international rules and regulations and the applicable standards. Otto Ganter GmbH & Co. KG will assume no statutory liability for missing or incorrect information and for any consequences arising therefrom.