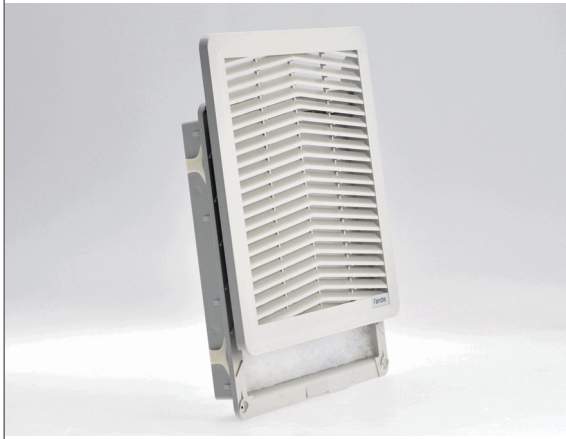


**"FF" SERIES FILTER UNITS**

Description: **Filter**



**Type of material:** PC/ABS Alloy; PA 66 GF13 HSL for elastic clips

**Standard color:** RAL 7035 - other colors on request

**Protection degree:** IP54, according to EN 60529 std  
Type 12 according to UL 508 Std

**Fixing system:** by elastic clips, otherwise by four self-threading screws

**Plate thickness:** FF08 from 1.0 to 2.0 mm, FF12 and FF13 from 1.3 to 3.2 mm, FF15 and FF20 from 1.3 to 3.7 mm (up to 4 mm with cut-out max tolerance).

**Rated temperature range:** from -10°C to + 60°C

**Storage temperature:** from -40°C to + 70°C

**Filtering class:** class G3, according to EN 779

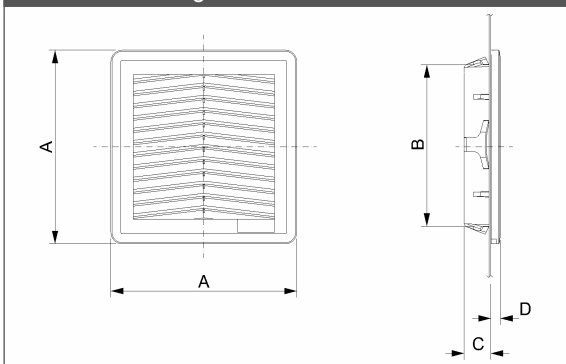
**Degree of separation:** 85% - DIN 24185

**Dust retention capacity:** 600 g/m<sup>2</sup>

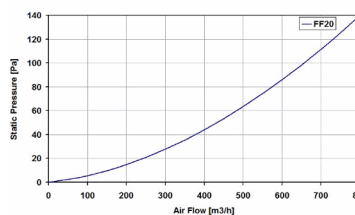
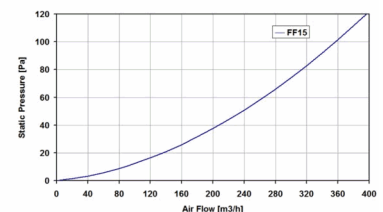
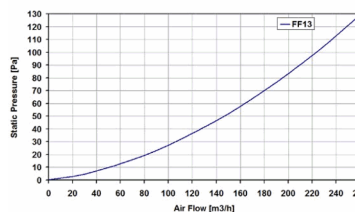
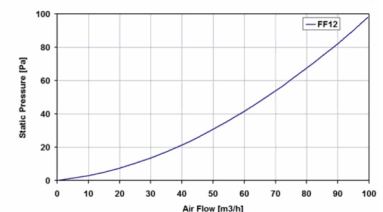
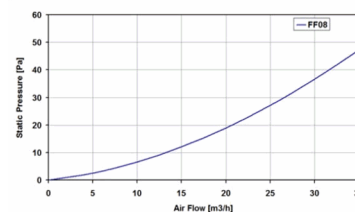
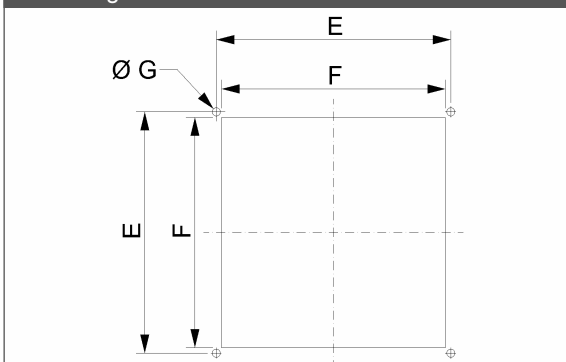
**Note:** filter media is washable for about 10 times

**Approvals:** CE, UL E237844, CSA

**technical drawing**



**mounting cut-out**



| Model | A     | B    | C    | D    | E    | F                                  | G    | Cross section free without media | Weight | Approvals         |
|-------|-------|------|------|------|------|------------------------------------|------|----------------------------------|--------|-------------------|
|       | (mm)  | (mm) | (mm) | (mm) | (mm) | (mm)                               | (mm) | (cm <sup>2</sup> )               | (Kg)   |                   |
| FF08U | 106.5 | 91.5 | 16.5 | 6.7  | 95   | 91.5 <sup>+1.5</sup> <sub>-0</sub> | 1.8  | 30                               | 0.07   | CE; cURus; cCSAus |
| FF12U | 150   | 124  | 21.5 | 7.7  | 131  | 124 <sup>+1.5</sup> <sub>-0</sub>  | 4.5  | 59                               | 0.18   | CE; cURus; cCSAus |
| FF13U | 203.9 | 176  | 21.5 | 8    | 185  | 177 <sup>+1.5</sup> <sub>-0</sub>  | 4.5  | 134                              | 0.26   | CE; cURus; cCSAus |
| FF15U | 250   | 223  | 24.9 | 8.9  | 230  | 223 <sup>+1.5</sup> <sub>-0</sub>  | 4.5  | 207                              | 0.42   | CE; cURus; cCSAus |
| FF20U | 325   | 291  | 24.5 | 9.5  | 302  | 291 <sup>+1.5</sup> <sub>-0</sub>  | 4.5  | 383                              | 0.60   | CE; cURus; cCSAus |

data with uncertainty of 15%

All specifications, data and drawing are subject to change without notice and are approximate. Please refer to our terms of sales including our warranty and limited liabilities clauses.