



AZM 170-02ZRKA-ST 24VAC/DC

- Connector M12, 4-pole
- Manual release
- Thermoplastic enclosure
- Double-insulated
- Compact design
- 90 mm x 84 mm x 30 mm
- Interlock with protection against incorrect locking.
- Long life
- High holding force

Data

Ordering data

Product type description	AZM 170-02ZRKA-ST 24VAC/DC
Article number (order number)	101141422
EAN (European Article Number)	4030661121888
eCl@ss number, Version 9.0	27-27-26-03
eCl@ss number, Version 11.0	27-27-26-03
eCl@ss number, Version 12.0	27-27-26-03
ETIM number, version 7.0	EC002593
ETIM number, version 6.0	EC002593

Approval - Standards

Certificates	BG cULus CCC EAC
--------------	---------------------------

General data

Standards	EN 60947-5-1 BG-GS-ET-19
Coding level according to ISO 14119	Low
Active principle	electromechanical
Enclosure material	Plastic, glass-fibre reinforced thermoplastic, self-extinguishing
Material of the contacts, electrical	Silver
Gross weight	275 g

General data - Features

Power to lock	Yes
Manual release	Yes
Number of actuating directions	2
Number of auxiliary contacts	1
Number of safety contacts	2

Safety appraisal

Standards	EN ISO 13849-1
Mission Time	20 Year(s)

Safety appraisal - Safety outputs

B _{10D} Normally-closed contact (NC)	2,000,000 Operations
-----------------------------------------------	----------------------

Mechanical data

Mechanical life, minimum	1,000,000 Operations
Clamping force in accordance with EN ISO 14119 F _{zh}	1,000 N
Latching force	30 N
positive break travel	11 mm
Positive break force, minimum	17 N
Actuating speed, maximum	2 m/s

Mechanical data - Connection technique

Terminal Connector	Connector plug M12, 4-pole, (A-coding) Connector plug M12, 4-pole, (B-coding)
--------------------	----------------------------------------------------------------------------------

Mechanical data - Dimensions

Length of sensor	30 mm
Width of sensor	90 mm
Height of sensor	75.5 mm

Ambient conditions

Degree of protection	IP67
Ambient temperature, minimum	-25 °C
Ambient temperature, maximum	+60 °C

Ambient conditions - Insulation value

Rated insulation voltage U_i	250 V
Rated impulse withstand voltage U_{imp}	2.5 kV

Electrical data

Thermal test current	4 A
Rated control voltage	24 VAC/DC
Required rated short-circuit current to EN 60947-5-1	1,000 A
Electrical power consumption, maximum	10 W
Switching element	Opener (NC)
Note (Switching element)	Change-over contact with double break, type Zb or 2 NC contacts, with galvanically separated contact bridges
Switching principle	Creep circuit element
Switching frequency	1,000 /h

Electrical data - Safety contacts

Voltage, Utilisation category AC-15	230 VAC
Current, Utilisation category AC-15	4 A
Voltage, Utilisation category DC-13	24 VDC
Current, Utilisation category DC-13	4 A

Other data

Note (applications)	sliding safety guard removable guard hinged safety guard
---------------------	----------------------------------------------------------------

Scope of delivery

Included in delivery	Actuators must be ordered separately.
----------------------	---------------------------------------

Notes

Note (General)	Individual coding available on request
Note (Manual release)	bottom For manual release using M5 triangular key, available as accessory

Ordering code

Product type description:

AZM 170(1)-(2)Z(3)K(4)-(5)-(6)-(7)

(1)

without	IDC method of termination
SK	Screw connection

(2)

11	1 NO contacts/1 NC contact
02	2 NC contact

(3)

without	Latching force 5 N
R	Latching force 30 N
I	Individual coding

(4)

without	Power to unlock
A	Power to lock

(5)

without	cable gland
ST	M12 x 1 connector
ST-2431	Connector M12 x 1, individual solenoid monitoring

(6)

24VAC/DC	Us 24 VAC/DC
110VAC	Us 110 VAC
230VAC	Us 230 VAC

(7)

without	Manual release
2197	Manual release from side (Power to unlock)
1637	Gold-plated contacts

(1)

11/11	1 NO contact, 1 NC contact / 1 NO contact 1, NC contact
11/02	1 NO contact, 1 NC contact / 2 NC contacts

Pictures

Product picture (catalogue individual photo)

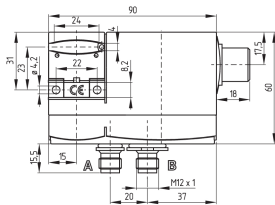


ID: kazm1f05

| 385.7 kB | .jpg | 292.806 x 226.131 mm - 830 x 641 px - 72 dpi

| 34.1 kB | .png | 74.083 x 57.15 mm - 210 x 162 px - 72 dpi

Dimensional drawing basic component



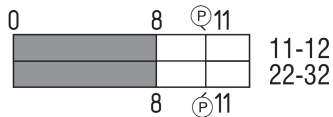
ID: 1azm1g04

| 44.0 kB | .cdr |

| 9.1 kB | .png | 74.083 x 51.506 mm - 210 x 146 px - 72 dpi

| 117.4 kB | .jpg | 352.778 x 245.181 mm - 1000 x 695 px - 72 dpi

Switch travel diagram



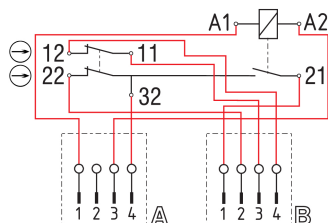
ID: kazm1s01

| 19.5 kB | .cdr |

| 1.8 kB | .png | 74.083 x 26.458 mm - 210 x 75 px - 72 dpi

| 49.4 kB | .jpg | 352.778 x 125.236 mm - 1000 x 355 px - 72 dpi

Diagram

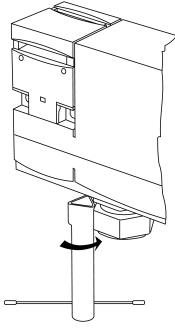


ID: kazm1k22

| 46.9 kB | .cdr |

| 135.9 kB | .jpg | 352.778 x 240.947 mm - 1000 x 683 px - 72 dpi

Operating principle



ID: kazm1a70

| 213.5 kB | .jpg | 352.778 x 656.519 mm - 1000 x 1861 px -
72 dpi

| 6.5 kB | .png | 74.083 x 137.583 mm - 210 x 390 px - 72 dpi

Schmersal Ltd., Sparrowhawk Close, WR14 1GL Malvern

The details and data referred to have been carefully checked. Images may diverge from original. Further technical data can be found in the manual. Technical amendments and errors possible.

Generated on: 29/03/2022, 11:45