

# Series KN-05, KN-55

## NAMUR

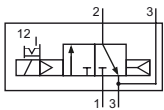
### Technical details

<b>Connection</b>	G1/4, Namur
<b>Nominal size</b>	6 mm
<b>Temperature range</b>	-10°C ... +70°C
<b>Medium</b>	Filtered, oil-free and dried compressed air according to ISO 8573-1:2010, Class 7:2:4, instrument air, free of aggressive additives. Alternatively the pressure dew point must be at least 10°C below lowest occurring ambient temperature.
<b>Materials</b>	Body: Al (anodized), plastic, seals: NBR, inner parts: Al, steel and plastic
<b>Protection</b>	IP 65 according to EN 60529
	Valves in accordance with 2014/34/EU (ATEX) available. (Chapter 13)

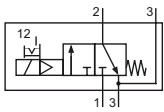


Electrically operated spool valve. The manual override is detent and is operated by screwdriver. The model KN-55 has a coil with enhanced humidity resistance and an additional gasket at the coil. The location pin, screws and seals are included.

### 3/2-way valves

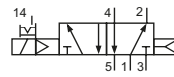


KN-05-310-HN-xxx  
KN-55-310-HN-xxx  
3/2-way, single solenoid, air spring return, NC

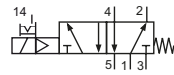


KN-05-311-HN-xxx  
KN-55-311-HN-xxx  
3/2-way, single solenoid, mechanical spring return, NC

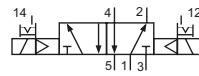
### 5/2- and 5/3-way valves



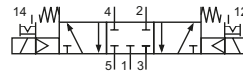
KN-05-510-HN-xxx  
KN-55-510-HN-xxx  
5/2-way, single solenoid, air spring return



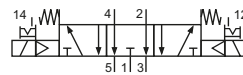
KN-05-511-HN-xxx  
KN-55-511-HN-xxx  
5/2-way, single solenoid, mechanical spring return



KN-05-520-HN-xxx  
KN-55-520-HN-xxx  
5/2-way, double solenoid



KN-05-530-HN-xxx  
KN-55-530-HN-xxx  
5/3-way, center position closed



KN-05-533-HN-xxx  
KN-55-533-HN-xxx  
5/3-way, center position exhausted

Please complete: xxx = electrical option

### Electrical options

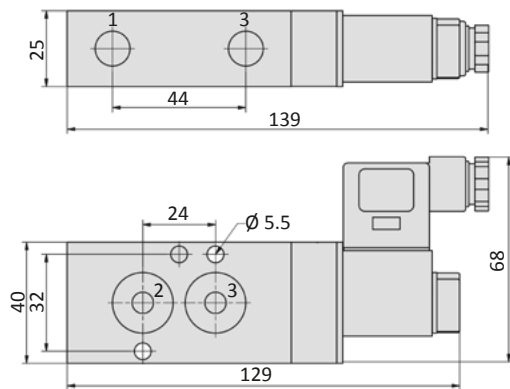
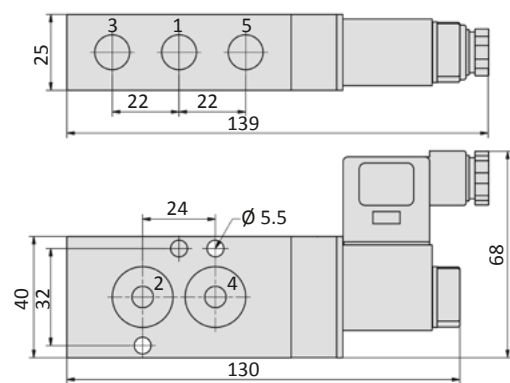
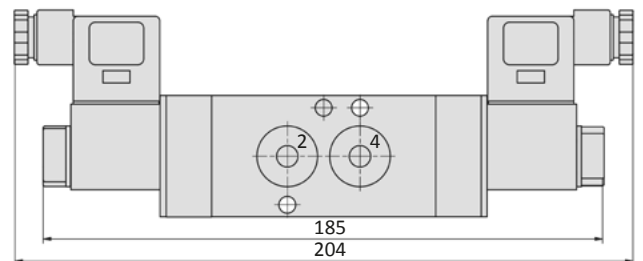
Nominal voltage	Power consumption	Specifics	Plug connection*1	-xxx	
				KN-05	KN-55
12 V DC	4.2 W		Form B industrial norm	-441	-741
12 V DC	2.2 W	max. 8 bar	Form B industrial norm	-461	-761
24 V DC	4.2 W		Form B industrial norm	-442	-742
24 V DC	4.8 W		M 12	-O42	-
24 V DC	2.2 W	max. 8 bar	Form B industrial norm	-462	-762
24 V DC	2.5 W	max. 8 bar	M 12	-O62	-
24 V AC	7/4 VA		Form B industrial norm	-452	-752
115 V AC	7/4 VA		Form B industrial norm	-456	-756
230 V AC	7/4 VA		Form B industrial norm	-457	-757

\*1 Plug socket not included, suitable plug sockets see page 4-38.

**Technical data**

Model-no.:	KN-05-310 KN-55-310	KN-05-311 KN-55-311	KN-05-510 KN-55-510	KN-05-511 KN-55-511	KN-05-520 KN-55-520	KN-05-530 KN-55-530	KN-05-533 KN-55-533
Operating pressure* (bar)	3...10	3...10	3...10	3...10	2...10	3...10	3...10
Pilot pressure* (bar)	3...10	3...10	3...10	3...10	2...10	3...10	3...10
Flow rate (NI/min)	780	780	900	800	900	680	680
Response time (ms) at 6 bar	on: 16 off: 18	on: 13 off: 16	on: 16 off: 17	on: 16 off: 18	on: 14 off: 14	on: 14 off: 16	on: 14 off: 16
Weight (kg)	0.320	0.320	0.320	0.320	0.440	0.440	0.440

\* max. 8 bar at 2.2 W and 2.5 W

**Dimensions**
**KN-05-31x-HN, KN-55-31x-HN**

**KN-05-51x-HN, KN-55-51x-HN**

**KN-05-520-HN, KN-55-520-HN, KN-05-53x-HN, KN-55-53x-HN**

 1 = pressure inlet  
 2,4 = outlets  
 3,5 = exhausts

 Plug socket (not included in scope of delivery) can be repositioned by 180°.  
 Solenoid coil can be repositioned by 4 x 90°.

**Accessories**


Plug sockets: page 4-38