

## 250 Manual Valves

250P, 250PL, 250F, 250V, 250HO, 250T

**250 Series Manual Valves feature the classic Humphrey diaphragm-poppet principle. The unbalanced, air/spring return design assures bubble-tight sealing actuated, or unactuated. Compact design permits close proximity mounting to the work and fast cycling/quick exhaust.**

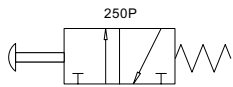
**These rugged 2- or 3-way valves are available in normally closed or normally open configurations, in standard or optional brass-body construction (for alternate media).**

### Base Models

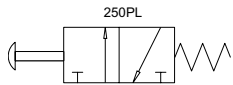
- 3-Way Push Button (250P)
- 3-Way Large Push Button (250PL)
- 3-Way Foot Operated (250F)
- 3-Way Toggle (250V)
- 3-Way Push and Hold On/Detented (250HO)
- 3-Way Finger Tip (250T)

### Features and Benefits

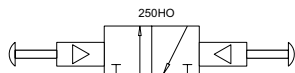
- "Bubble Tight" seal
- Full ported 1/4" orifice, 1/4 PIPE ports.
- Fast cycling, high flow, quick exhaust.
- Reliable operation in lubricated or not lubricated air supply systems. No sliding seals.
- Hard plumb mount, or panel mount using mounting base or mounting base.
- Buna-N seals standard. Fluorocarbon seals optional.



250P – Push Button



250PL – Large Push Button

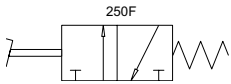


250HO – Hold On

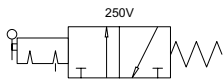


### SPECIFICATIONS

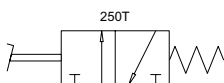
Design Principle:	Pressure Unbalanced, Air Return, Spring Assist	Media:	Air, Inert Gas
Porting Type:	2- or 3-Way	Pressure Range:	0–125 PSIG; HO: 25–125 PSIG
Port Size:	1/4 PIPE	Temperature Range:	-20° to 225°F
		Flow @100 PSIG:	50 CFM, 1415 LPM (Cv=0.8)



**250F – Foot Valve**



**250V – Toggle**



**250T – Finger Tip**



**How To Order Valves & Manifolds... Page 109**

**HOW TO OBTAIN VALVE SPECIFICATIONS**

- ☞ Visit [www.humphrey-products.com](http://www.humphrey-products.com) and select "Online Product Guide."
- From the search options provided, choose the valve you want and the details for that product.
- Once completed, select "Spec Sheet" to create a PDF of the valve, which you may save and print at your convenience.

**HOW TO FIND A DISTRIBUTOR**

- ☞ Visit [www.humphrey-products.com](http://www.humphrey-products.com), select "Find A Distributor," and input your information to locate a distributor nearest you.
- Or, call Customer Service at 1-800-477-8707 for the name and phone number of your local distributor.

**HUMPHREY PRODUCTS ARE SOLD WORLD-WIDE THROUGH AUTHORIZED DISTRIBUTORS**

ORDER EXAMPLE

250T-3-10-21-VAI

(250 Series "Finger Tip" Operated Valve - 3-Way - Normally Closed - with Mounting Base - with FKM (Fluorocarbon) Seals)

125, 250 & 501 MANUAL SERIES

BASE MODEL	PORTING		FUNCTION		MOUNTING			BUTTON MATERIAL		FKM SEALS OPTION	BRASS BODY	1/8 PIPE BOTTOM INLET (NC only)
	2-way	3-way	Normally Closed	Normally Open	No Base	Mounting Base	Panel Mount	Nylon	Steel			
125P	-2	-3		-11	-20	-21	-22	-40	-41	-VAI	-BRB	
125PLG	—	•		—	•	•	•			—	•	
125HO			-10				-22					-BIN
125T	-2	-3		-11	-20	-21	—	—	—	-VAI	-BRB	
125V				—			-22					
250HO				—	-20			—				
250P					—	-21		•				-BIN
250PL					•			—				
250F				-11	—	•	—	•	—	-VAI	-BRB	—
250T												
250V				—	-20	-21		—				-BIN
501V	-2	-3		-12	•	-21	—	—	—	-VAI	—	—



125PLG - Large Push Button



125V - Toggle



250F - Foot Valve



250PL - Large Push Button



501V

— Not Applicable or Not Available

• Standard Offering (no code necessary)

\* Order separately (brackets, bases, port plugs, etc.)

ALL OTHERS Enter code choice, if desired.

HOW-TO ORDER...MANUAL AND MECHANICAL VALVES