

## Verbindungs-**muffe**

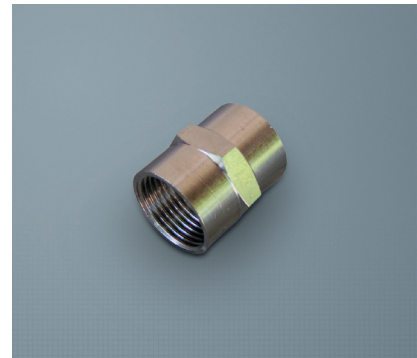
### TYP M-MN

**Material:** Messing vernickelt  
**Temperaturbereich:** bis +200°C

## Connecting Sleeve

### TYPE M-MN

**Material:** Nickel-plated brass  
**Temperature Range:** up to +200°C



#### GEWINDEART METRISCH

Art. Nr. Art. No.	IG Female	L mm	SW mm	VPE Stk. Unit pcs.
M-MNM16E	M16	18	19	20
M-MNM20E	M20	22	24	20
M-MNM25E	M25	24	30	10
M-MNM32E	M32	30	38	10
M-MNM40E	M40	37	45	5
M-MNM50E	M50	37	52	5
M-MNM63E	M63	36	70	5



#### GEWINDEART PG

Art. Nr. Art. No.	IG Female	L mm	SW mm	VPE Stk. Unit pcs.
M-MN01	PG09	18	19	20
M-MN02	PG11	22	22	20
M-MN03	PG13,5	22	24	20
M-MN04	PG16	24	26	20
M-MN05	PG21	24	32	10
M-MN06	PG29	30	42	10
M-MN07	PG36	34	50	5
M-MN08	PG42	35	58	5
M-MN09	PG48	45	64	5



#### GEWINDEART ZOLL

Art. Nr. Art. No.	IG Female	L mm	SW mm	VPE Stk. Unit pcs.
M-MN1E	1/4"	15	15	20
M-MN2E	3/8"	18	19	20
M-MN3E	1/2"	22	24	20
M-MN4E	3/4"	24	30	10
M-MN5E	1"	30	38	10
M-MN6E	1 1/4"	37	45	5
M-MN7E	1 1/2"	35	52	5
M-MN8E	2"	35	65	5

## Gewindenippel

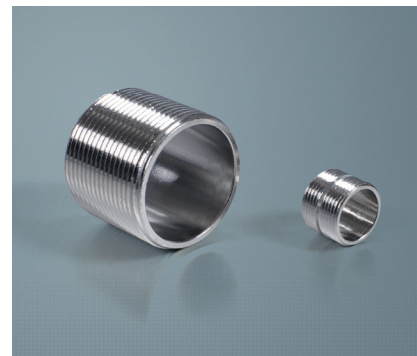
### TYP M-N

**Material:** Messing vernickelt  
**Temperaturbereich:** bis +200°C

## Nipple

### TYPE M-N

**Material:** Nickel-plated brass  
**Temperature Range:** up to +200°C



#### GEWINDEART METRISCH

Art. Nr. Art. No.	AG Male	L mm	ID mm	VPE Stk. Unit pcs.
M-NM16	M16	22	12	20
M-NM20	M20	22	15	20
M-NM25	M25	25	20	20
M-NM32	M32	28	25	10
M-NM40	M40	38	34	5
M-NM50	M50	40	40	5
M-NM63	M63	46	57	5



#### GEWINDEART PG

Art. Nr. Art. No.	AG Male	L mm	ID mm	VPE Stk. Unit pcs.
M-NP001	PG07	16	9	20
M-NP002	PG09	17	11	20
M-NP003	PG11	17	14	20
M-NP004	PG13,5	17	16	20
M-NP005	PG16	17	18	20
M-NP006	PG21	21	23	10
M-NP007	PG29	23	31	10
M-NP008	PG36	25	39	5
M-NP009	PG42	28	45	2
M-NP010	PG48	31	53	2



#### GEWINDEART ZOLL

Art. Nr. Art. No.	AG Male	L mm	ID mm	VPE Stk. Unit pcs.
M-NG02	1/4"	19	9	20
M-NG03	3/8"	22	12	20
M-NG04	1/2"	22	15	20
M-NG05	3/4"	25	20	20
M-NG06	1"	28	25	10
M-NG07	1 1/4"	38	34	5
M-NG08	1 1/2"	40	40	5
M-NG09	2"	44	53	2
M-NG10	2 1/2"	40	66	-
M-NG11	3"	64	80	-

1/2" bis 3": Stahl verzinkt  
1/2" to 3": galvanized steel