

ELKAY® SPECIFICATIONS

Lustertone® Single Bowl Sink Models LRAD and LRADQ Series – A.D.A. Compliant

GENERAL

Highest quality sink seamlessly formed of #18 gauge, type 304 (18-8) nickel bearing stainless steel. Self-rimming.

DESIGN FEATURES

LRAD(Q) Bowl Depth: 4", 4-1/2", 5", 5-1/2", 6" or 6-1/2".

Coved Corners: 1-3/4" vertical and horizontal radius.

Bowl and Faucet Deck Recess: 3/16" below outside edge of sink.

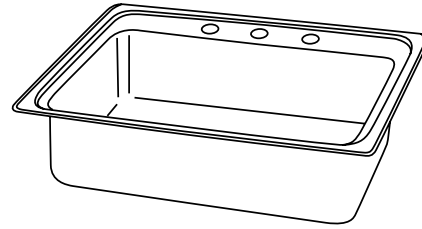
Finish: Exposed surfaces are hand blended to a lustrous high-lighted satin finish.

Underside: Fully undercoated to dampen sound and prevent condensation.

OTHER

Drain Opening: 3-1/2" (see back for locations).

NOTE: Unless otherwise specified, models with one, two, three or OS4 faucet hole option are furnished with 3 faucet holes as shown; models with choice of one, two, three, four or five faucet hole option are furnished with 4 faucet holes standard.



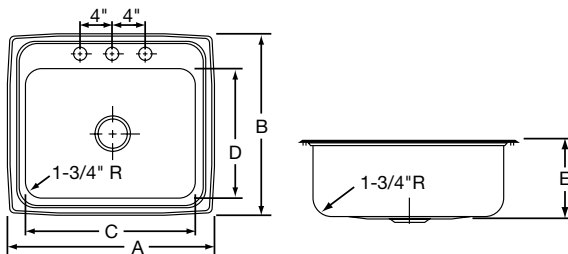
Model LRAD(Q)2521653

SINK DIMENSIONS (INCHES)*

U-Channel Model Number	Quick-Clip® Model Number	Overall		Inside Bowl			Cutout in Countertop (1 1/2" Radius Corners)		No. of 1 1/2" Dia. Faucet Holes 4" Center	3 1/2" Drain Opening (see back for details)	Minimum Cabinet Size	Ship. Wt. Lbs.
		L	W	L	W	D	L	W				
		A	B	C	D	E						
LRAD1316	LRADQ1316	13	16	10	10	**	12 3/8	15 3/8	1, 2, MR2 or 3	Centered	18	9 1/2
LRAD1517	LRADQ1517	15	17 1/2	12	12	**	14 3/8	16 7/8	1, 2, MR2 or 3	Centered	18	9 3/4
LRAD1522	LRADQ1522	15	22	11 1/2	16	**	14 3/8	21 3/8	1, 2, MR2 or 3	Off-Centered Rear	18	12
LRAD1716	LRADQ1716	17	16	14	10	**	16 3/8	15 3/8	1, 2, MR2, 3 or OS4	Centered	21	8 1/2
LRAD1720	LRADQ1720	17	20	14	14	**	16 3/8	19 3/8	1, 2, MR2, 3 or OS4	Off-Centered Rear	21	12
LRAD1722	LRADQ1722	17	22	13 1/2	16	**	16 3/8	21 3/8	1, 2, MR2, 3 or OS4	Off-Centered Rear	21	13
LRAD1918	LRADQ1918	19	18	16	11 1/2	**	18 3/8	17 3/8	1, 2, MR2, 3 or OS4	Off-Centered Rear	24	10 1/2
LRAD1918L	LRADQ1918L	19	18	16	11 1/2	**	18 3/8	17 3/8	1, 2, MR2, 3 or OS4	Off-Centered Left	24	10 1/2
LRAD1918R	LRADQ1918R	19	18	16	11 1/2	**	18 3/8	17 3/8	1, 2, MR2, 3 or OS4	Off-Centered Right	24	10 1/2
LRAD1919	LRADQ1919	19 1/2	19	16	13 1/2	**	18 7/8	18 3/8	1, 2, MR2, 3 or OS4	Off-Centered Rear	24	13
LRAD2022	LRADQ2022	19 1/2	22	16	16	**	18 7/8	21 3/8	1, 2, MR2, 3 or OS4	Off-Centered Rear	24	14 1/2
LRAD2219	LRADQ2219	22	19 1/2	18	14	**	21 3/8	18 7/8	1, 2, MR2, 3, 4 or 5	Off-Centered Rear	27	13
LRAD2219L	LRADQ2219L	22	19 1/2	18	14	**	21 3/8	18 7/8	1, 2, MR2, 3, 4 or 5	Off-Centered Left	27	13
LRAD2219R	LRADQ2219R	22	19 1/2	18	14	**	21 3/8	18 7/8	1, 2, MR2, 3, 4 or 5	Off-Centered Right	27	13
LRAD2222	LRADQ2222	22	22	19	16	**	21 3/8	21 3/8	1, 2, MR2, 3, 4 or 5	Off-Centered Rear	27	14
LRAD2521	LRADQ2521	25	21 1/4	21	15 3/4	**	24 3/8	20 5/8	1, 2, MR2, 3, 4 or 5	Off-Centered Rear	30	15
LRAD2521L	LRADQ2521L	25	21 1/4	21	15 3/4	**	24 3/8	20 5/8	1, 2, MR2, 3, 4 or 5	Off-Centered Left	30	15
LRAD2521R	LRADQ2521R	25	21 1/4	21	15 3/4	**	24 3/8	20 5/8	1, 2, MR2, 3, 4 or 5	Off-Centered Right	30	15
LRAD3122	LRADQ3122	31	22	28	16	**	30 3/8	21 3/8	1, 2, MR2, 3, 4 or 5	Off-Centered Rear	36	19

*Length is left to right. Width is front to back.

**Available in 4", 4 1/2", 5", 5 1/2", 6" and 6 1/2" depths. Please consult your sales representative for other depths or modifications.



THIS PRODUCT, AS CONSTRUCTED IS SUBJECT TO INTERPRETATION OF A.D.A. REQUIREMENTS. THE UNOBSTRUCTED KNEE SPACE REQUIRED TO SATISFY A.D.A. STANDARDS MAY NOT BE DESIRABLE.

ALL DIMENSIONS IN INCHES, TO CONVERT TO MILLIMETERS MULTIPLY BY 25.4.

In keeping with our policy of continuing product improvement, Elkay reserves the right to change product specifications without notice.

This specification describes an Elkay product with design, quality and functional benefits to the user. When making a comparison of other producers' offerings, be certain these features are not overlooked.

Elkay
www.elkayusa.com

2222 Camden Court
Oak Brook, IL 60523

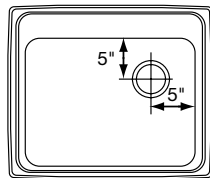
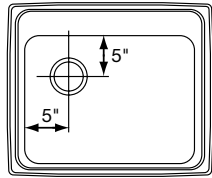
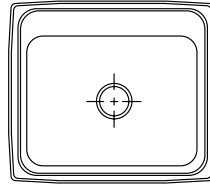
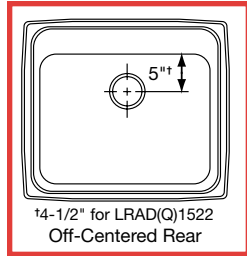
Printed in U.S.A.
©2009 Elkay

(Rev. 12/09) 1-135G

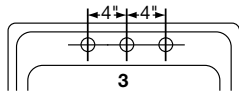
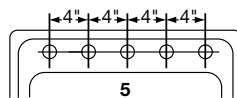
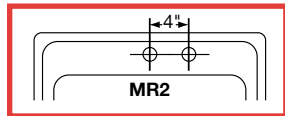
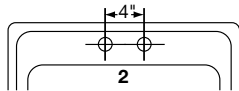
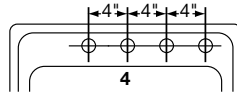
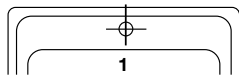
**Lustertone® Single Bowl Sink
Models LRAD and LRADQ Series – A.D.A. Compliant**

**ELKAY®
SPECIFICATIONS**

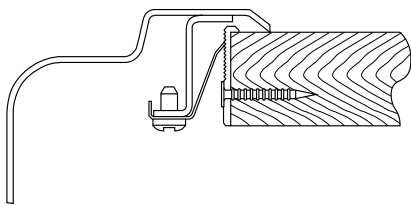
DRAIN OPENING LOCATIONS



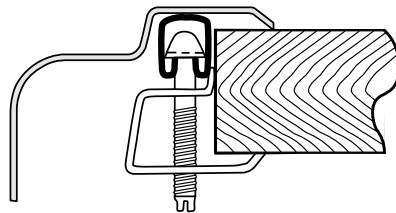
HOLE DRILLING CONFIGURATIONS



Quick-Clip® Mounting System



U-Channel Type Mounting System



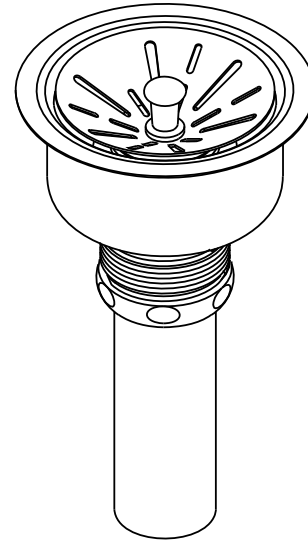
ELKAY[®]

SPECIFICATIONS

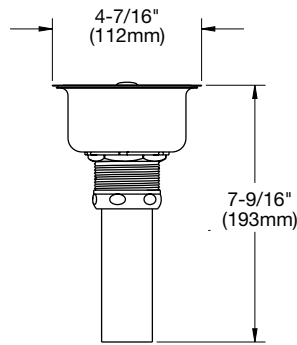
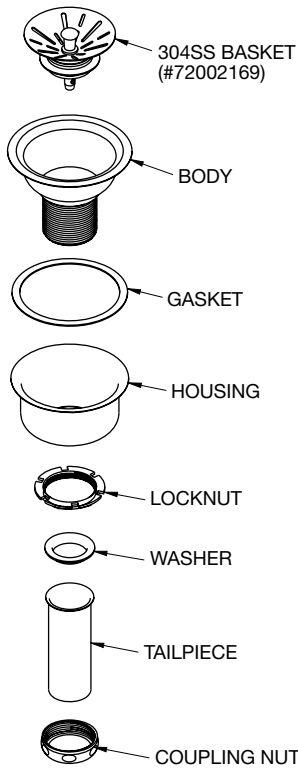
Sink Accessories Drain Fitting Model LK99

GENERAL

- Type 304 stainless steel body and removable conical basket strainer with metal ball bearing locking stem and rubber stopper
- Fits 3-1/2" (89mm) opening
- Ultra bright polished finish
- Type 304 stainless steel 1-1/2" (38mm) x 4" (102mm) tailpiece



Model LK99



In keeping with our policy of continuing product improvement, Elkay reserves the right to change product specifications without notice. Please visit elkayusa.com for most current version of Elkay product specification sheets.

This specification describes an Elkay product with design, quality and functional benefits to the user. When making a comparison of other producers' offerings, be certain these features are not overlooked.

Elkay
elkayusa.com

2222 Camden Court
Oak Brook, IL 60523

Printed in U.S.A.
©2008 Elkay

(Rev. 10/08) 15-7D

ELKAY

sinks + faucets

Discover the professional's choice.™



for the home

for commercial

where to buy

faucet

can we assist you in finding a product?

compare selected products

quick product selector

[back to summary page](#)

you have selected...

[click on \[icon\] for detailed view](#) * Suggested list price



Allure Stainless Kitchen Faucet | LK7921

Stainless Steel
Single Lever

Spray Type: No Spray

1 Faucet Hole



Overall Height: 13 3/4"
Deck Clearance: 7 3/4"
Spout Reach: 8"

\$499 *

Finish Options:



style option results... **Allure Stainless Kitchen Faucet | LK7921SS5**

* Suggested list price

[Print this page](#)

[Email to a friend](#)

[Where to buy](#)

[Add to compare](#)

[Back to the summary page](#)

product details

product documents



Image May Not Reflect Selected Options



Mounting Type:	Deck
Finish:	Satin Stainless Steel
Handle Qty:	1
Handle Type:	Lever Handle
Spout Type:	Integral Spout
Overall Height:	13 3/4"
Deck Clearance:	7 3/4"
Spout Reach:	8"
Holes Drilling(s):	1
Material:	Stainless Steel
Valve Type:	Ceramic Disc
Valve Connection:	1/2" IPT
Flow Rate:	2.2 gpm
Code Compliance:	ADA, IAPMO
Shipping Weight:	6.6 lbs.

Price: \$499*

Price is for U.S. purchase only

ELKAY®**SPECIFICATIONS****FEATURES****Model LK7921SSS**

- Single hole top mount installation
 - 1-1/2" (38mm) faucet hole required
 - Maximum countertop thickness 2-1/2" (64mm)
- Solid stainless steel construction
- 360° swing spout
- Ceramic disc cartridge
- Stainless steel construction
- Flexible braided stainless steel supply hoses with 1/2" (13mm) compression fittings
- Ship Wt. 6.6 lbs. (3Kg)
- Due to the weight of this faucet, Elkay recommends that it be installed to an 18" (457mm) gauge stainless steel sink (or heavier) or to a solid surface countertop
- Maximum flow rate
 - 2.5 GPM/9.5 L/min at 80 P.S.I.G.
 - 2.2 GPM/8.3 L/min at 60 P.S.I.G.

Model LK7922SSS

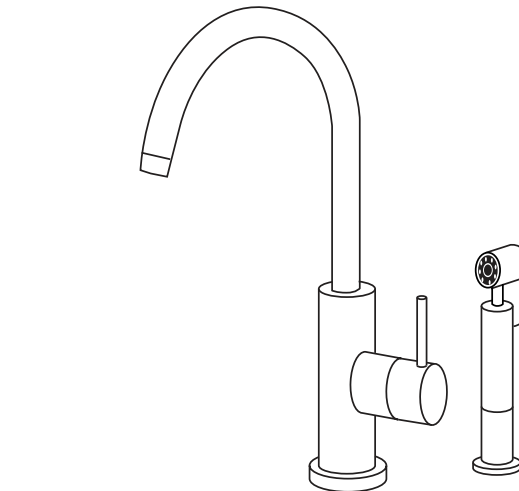
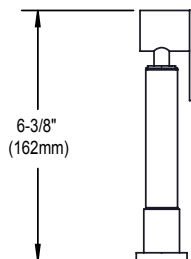
- Same as LK7921SSS except with a retractable side spray
- Two hole top mount installation
 - One 1-1/2" (38mm) diameter faucet holes required for faucet and one 1-1/4" (32mm) diameter faucet holes required for side spray
 - Maximum countertop thickness 2-1/2" (64mm)
- Ship Wt. 7 lbs. (3.2Kg)

WARRANTY

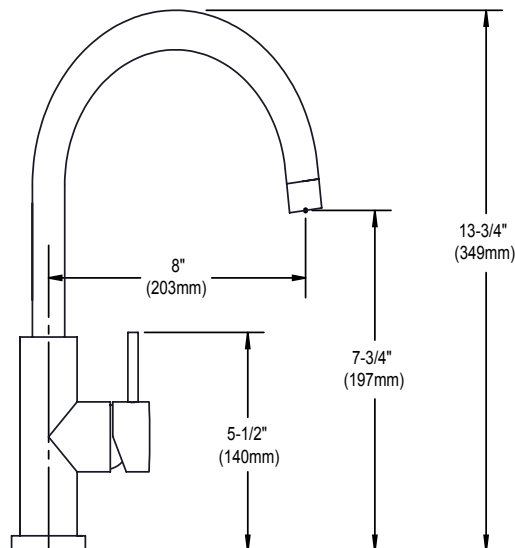
- Limited Lifetime

COMPLIES WITH:

- ADA
- ANSI/NSF61 - Certified
- ASME 112.18.1/CSA B125.1 - Certified
- CAAB1953/VT S152
- cUPC - Certified
- UPC - Certified



Model LK7922SSS



SEE OTHER SIDE FOR REPLACEMENT PARTS

Elkay
elkayusa.com

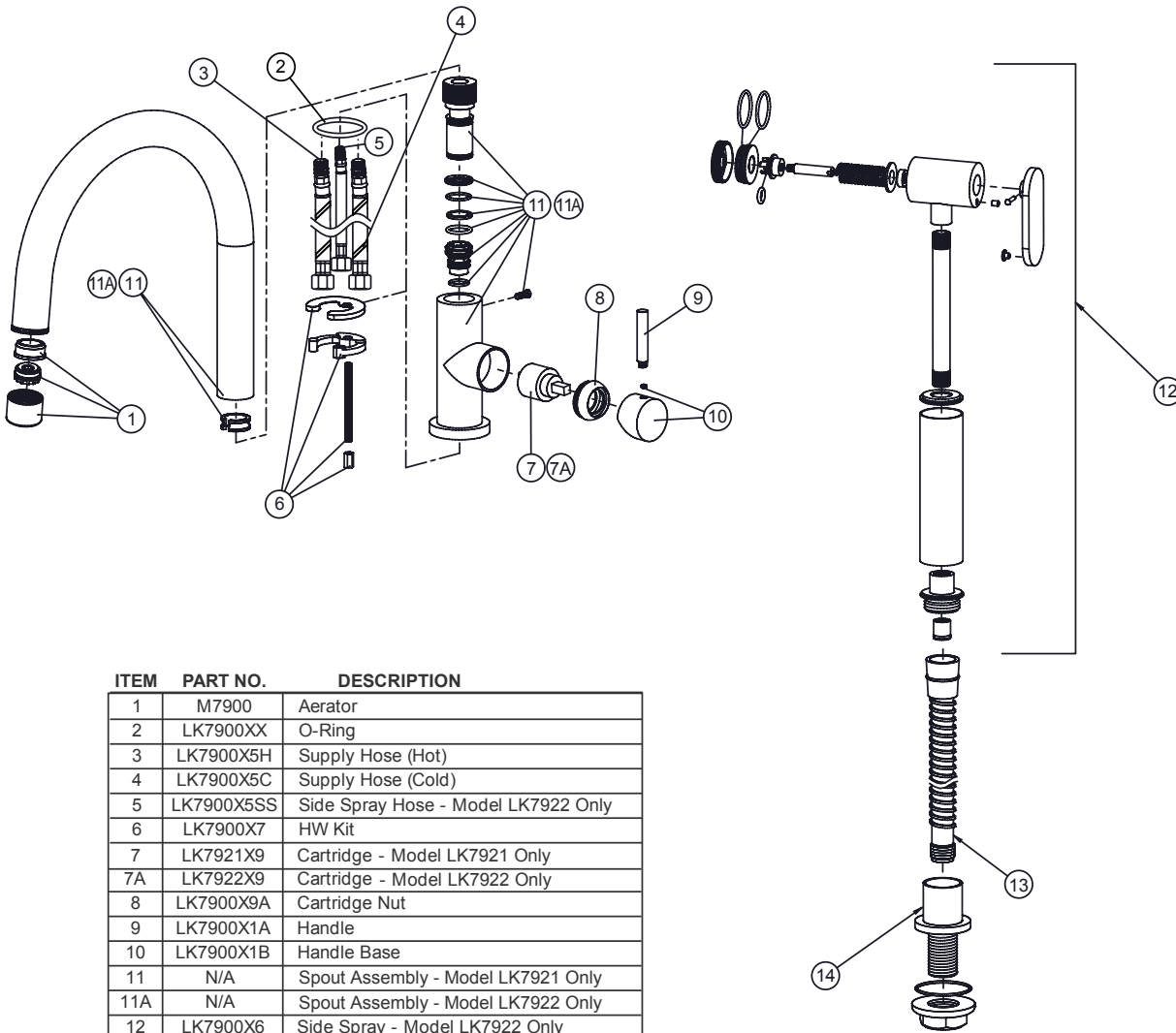
2222 Camden Court, Oak Brook, IL 60523
1-630-574-8484 Fax: 1-630-574-4509

©2009 Elkay
LK7921_7922_E (7/11)



REPLACEMENT PARTS

**Allure® Single Handle Kitchen Faucet
Models LK7921SSS and LK7922SSS**



ITEM	PART NO.	DESCRIPTION
1	M7900	Aerator
2	LK7900XX	O-Ring
3	LK7900X5H	Supply Hose (Hot)
4	LK7900X5C	Supply Hose (Cold)
5	LK7900X5SS	Side Spray Hose - Model LK7922 Only
6	LK7900X7	HW Kit
7	LK7921X9	Cartridge - Model LK7921 Only
7A	LK7922X9	Cartridge - Model LK7922 Only
8	LK7900X9A	Cartridge Nut
9	LK7900X1A	Handle
10	LK7900X1B	Handle Base
11	N/A	Spout Assembly - Model LK7921 Only
11A	N/A	Spout Assembly - Model LK7922 Only
12	LK7900X6	Side Spray - Model LK7922 Only
13	LK7922X5SS	Side Spray Hose - Model LK7922 Only
14	LK7900X7SS	Side Spray HW Kit - Model LK7922 Only

Discover the professional's choice.™


ELKAY
commercial products

[for the home](#) |
 [for commercial](#) |
 [where to buy](#) |

[compare selected products](#) |
 [quick product selector](#)

[back to summary page](#)

you have selected...
click on for detailed view * Suggested list price




Glass Filler | LK1110

Glass fillers dispense water into all types of drinkware with ease.

Elkay water dispensers comply with and surpass the lead-free definition in the Safe Drinking Water Act and the 1988 Lead Contamination Control Act.

\$217 *



[Specification Sheet:](#)

100% Lead-Free Waterway System

Stainless Steel Gooseneck

Plastic Push Lever Control



Overall Height: 8 1/4"

Spout Reach: 3"

style option results...Glass Filler | LK1110
* Suggested list price

[Print this page](#) |
 [Email to a friend](#) |
 [Where to buy](#) |
 [Add to compare](#)

[product details](#) |
 [product documents](#)






Accessory Type:	Glass Filler
Material:	Stainless Steel
Finish:	Chrome
Overall Height:	8 1/4"
Spout Reach:	3"
Shipping Weight:	1 lbs.
Price:	\$217*

Price is for U.S. purchase only

[photos, videos + e-brochures](#) |
 [shop online](#) |
 [about us](#) |
 [facebook](#) |
 [contact us](#) |
 [privacy policy](#) |
 [terms of use](#) |
 [site map](#) |
 [elkay.com](#) |
 (630)574-8484

© 2007-2011 Elkay Sales Inc.

http://www.elkayusa.com/cps/rde/xchg/elkay/hs.xsl/elkay-com-13968.aspx?pid=LK1110

[Back to the summary page](#)



Image May Not Reflect Selected Options

<http://www.elkayusa.com/cps/rde/xchg/elkay/hs.xsl/elkay-com-13968.aspx?pid=LK1110>

ELKAY[®]

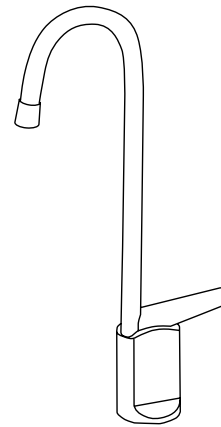
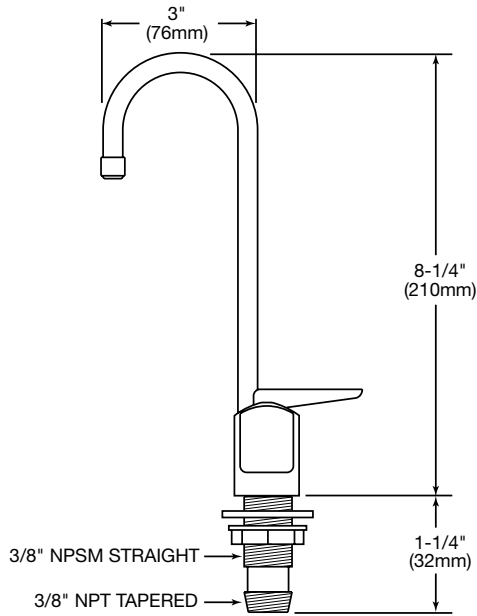
SPECIFICATIONS

Push Lever Glass Filler Model LK1110

GENERAL

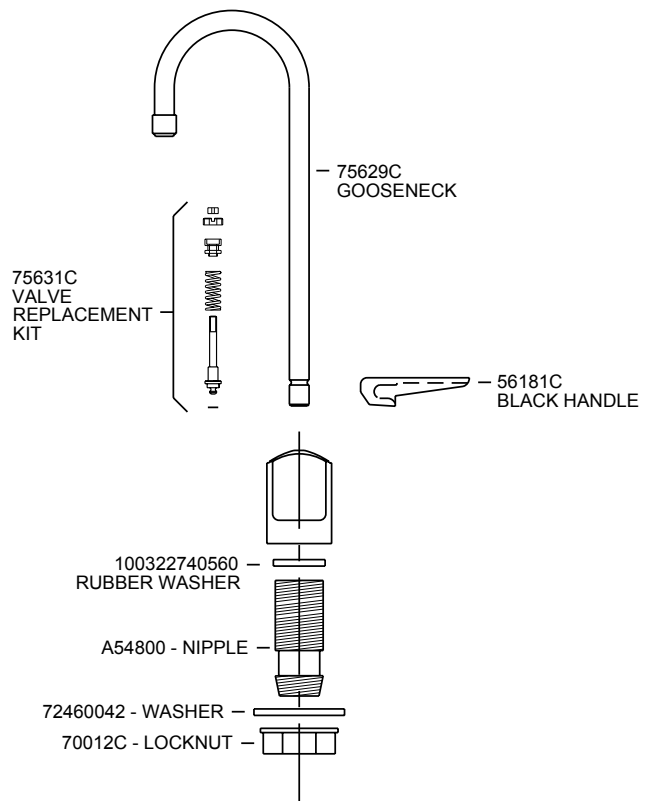
K1110 stainless steel single water gooseneck glass filler, manufactured with 100% lead-free material, plastic push lever control, 8-1/4" (210mm) high overall, 3/8" NPT connection. Ship. Wt. 1 lb.

DIMENSIONS



Model LK1110

PARTS LIST



In keeping with our policy of continuing product improvement, Elkay reserves the right to change product specifications without notice.

This specification describes an Elkay product with design, quality and functional benefits to the user. When making a comparison of other producers' offerings, be certain these features are not overlooked.

Elkay
elkayusa.com

2222 Camden Court
Oak Brook, IL 60523

Printed in U.S.A.
©2006 Elkay

(Rev. 2/06) 16-3F