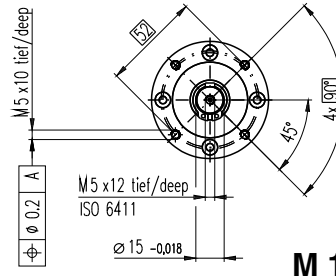
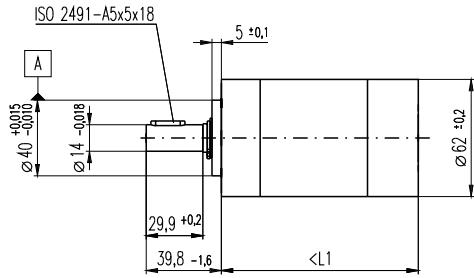


Planetary Gearhead GP 62 A $\varnothing 62$ mm, 8–50 Nm



M 1:4

Technical Data

Planetary Gearhead	straight teeth
Output shaft	steel
Bearing at output	ball bearing
Radial play, 7 mm from flange	max. 0.08 mm
Axial play	max. 1 mm
Max. axial load (dynamic)	120 N
Max. force for press fits	1000 N
Direction of rotation, drive to output	=
Max. continuous input speed	3000 rpm
Recommended temperature range	-30...+140°C
Number of stages	1 2 3
Max. radial load, 24 mm from flange	240 N 360 N 570 N

- Stock program
- Standard program
- Special program (on request)

Part Numbers

	110499	110501	110502	110503	110504	110505	110506	110507	110508
Gearhead Data									
1 Reduction	5.2:1	19:1	27:1	35:1	71:1	100:1	139:1	181:1	236:1
2 Absolute reduction	⁵⁷ / ₁₁	³⁵⁹ / ₁₈₇	³²⁴⁹ / ₁₂₁	¹⁵³⁹ / ₄₄	²²⁶²²³ / ₃₁₇₉	²⁰⁴⁶⁸⁷ / ₂₀₅₇	¹⁸⁵¹⁹³ / ₁₃₃₁	⁸⁷⁷²³ / ₄₈₄	⁴¹⁵⁵³ / ₁₇₆
3 Max. motor shaft diameter	mm 8	8	8	8	8	8	8	8	8
4 Number of stages	1	2	2	2	3	3	3	3	3
5 Max. continuous torque	Nm 8	25	25	25	50	50	50	50	50
6 Max. intermittent torque at gear output	Nm 12	37	37	37	75	75	75	75	75
7 Max. efficiency	% 80	75	75	75	70	70	70	70	70
8 Weight	g 950	1250	1250	1250	1540	1540	1540	1540	1540
9 Average backlash no load	° 1.0	1.5	1.5	1.5	2.0	2.0	2.0	2.0	2.0
10 Mass inertia	gcm ² 109	100	105	89	104	105	102	88	89
11 Gearhead length L1	mm 72.5	88.3	88.3	88.3	104.2	104.2	104.2	104.2	104.2



maxon Modular System

+ Motor	Page	+ Sensor	Page	Brake	Page	Overall length [mm] = Motor length + gearhead length + (sensor/brake) + assembly parts							
RE 50, 200 W	143				180.6	196.4	196.4	196.4	212.3	212.3	212.3	212.3	212.3
RE 50, 200 W	143	HEDS 5540	363		201.3	217.1	217.1	217.1	233.0	233.0	233.0	233.0	233.0
RE 50, 200 W	143	HEDL 5540	365		201.3	217.1	217.1	217.1	233.0	233.0	233.0	233.0	233.0
RE 50, 200 W	143	HEDL 9140	369		243.0	258.8	258.8	258.8	274.7	274.7	274.7	274.7	278.7
RE 50, 200 W	143			AB 44	412	243.0	258.8	258.8	258.8	274.7	274.7	274.7	278.7
RE 50, 200 W	143	HEDL 9140	369	AB 44	412	256.0	271.8	271.8	271.8	287.7	287.7	287.7	287.7
EC 45, 250 W	217				216.6	232.4	232.4	232.4	248.3	248.3	248.3	248.3	248.3
EC 45, 250 W	217	HEDL 9140	368		232.2	248.0	248.0	248.0	263.9	263.9	263.9	263.9	263.9
EC 45, 250 W	217	Res 26	374		216.6	232.4	232.4	232.4	248.3	248.3	248.3	248.3	248.3
EC 45, 250 W	217			AB 28	409	224.0	239.8	239.8	239.8	255.7	255.7	255.7	255.7
EC 45, 250 W	217	HEDL 9140	368	AB 28	409	241.0	256.8	256.8	256.8	272.7	272.7	272.7	272.7