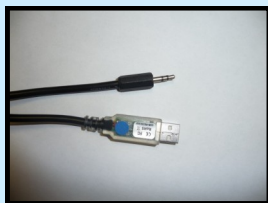


USB/RS232 adapter installation under Windows

RS232 link setting



Step 1: Driver installation for USB / RS232 adapter



- download driver here:

http://www.loreme.fr/aff_produits.asp?rubid=53&langue=fr

- Click on the downloaded executable file to install the driver,
- Plug the cable on a USB port, Windows install a new serial communication port **COMx** (x >= 4).

Note:

The use of the cable on another USB port don't generates a new communication port. Use of another adapter generates another communication port number (COMx) and requires the reconfiguration of the HyperTerminal.

Step 2: Setting of terminal emulation software (PC with windows).

- 1 The terminal emulation software for PC « HyperTerminal » is resident in windows up to XP version. For later versions, it is downloadable here: http://www.loreme.fr/aff_produits.asp?rubid=53&langue=fr
=> Run the downloaded software to install it (see next page).

- 2 Start a "hyper Terminal" connection :
 - Click on "**START**" button

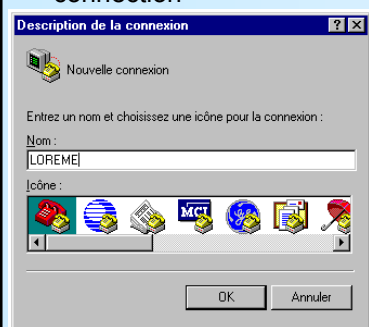
Up to XP version

 - Go to "**Programs \ Accessories \ Communication \ Hyper Terminal**"
 - Click on "**Hypertrm.exe**"

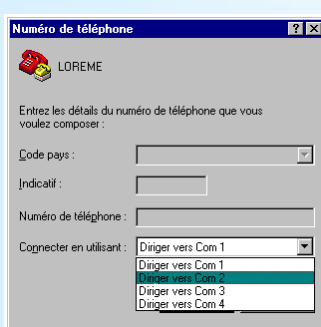
Or if the software was downloaded

 - Go to "**All programs \ HyperTerminal Private Edition**"
 - Click on "**HyperTerminal Private Edition**"

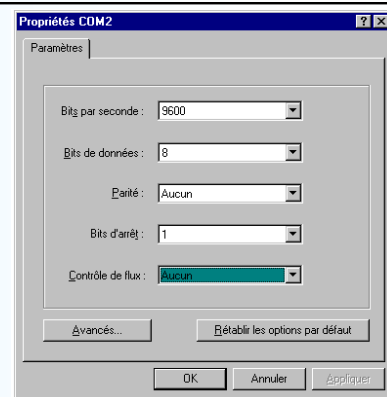
- 3 Enter name for the new connection



- 4 Choose the communication port related to the adapter.

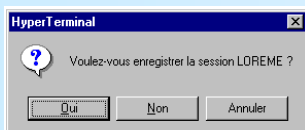


- 5 Choose:
 - 9600 bauds
 - 8 DATA bits
 - no parity
 - 1 stop bit
 - **XON/XOFF**



- 6 The PC is now in terminal mode, connect it to the device by plugging the RS232 cable.

- 7 When leaving Hyper terminal, the following window will appear. By saving, the terminal session will start with the same configuration.



Thus, the shortcut **LOREME.ht** will permit to communicate with all LOREME devices.

Note: To modify the parameters of terminal mode whereas this one is already started, it is necessary, after having carried out the modifications, to close the terminal and to open it again so that the modifications are effective.

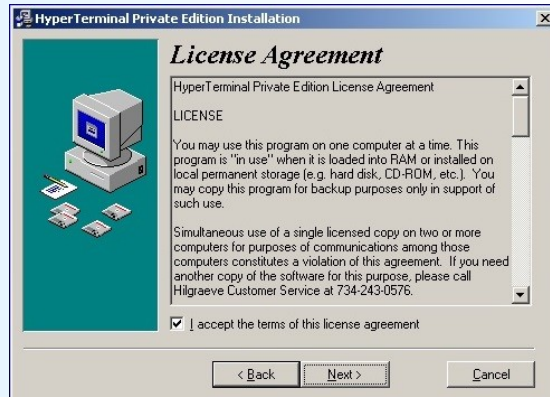
HyperTerminal Private Edition software installation

Run the executable file "**htpe63.exe**" to start the installation.

Choose « HyperTerminal Private edition 6.3 »



Accept the license for use it.



Answer « Yes »



Install the program in default location



Click on « Finish » to quit the install program

