



MODEL GPD ■■■

Diesel Engine Fire Pump Controllers



Standard Features

- ViZiTouch V2 operator interface
- NEMA 2 assembly
- Pressure and event recorder
- Battery voltage and amperage display
- Run Test push button
- HAND - OFF - AUTO selector switch
- Manual crank pushbuttons (2)
- Stop pushbutton
- Remote start / deluge valve start provision
- Pressure transducer and run test solenoid valve externally mounted
- Gland plate
- Audible alarm
- Alarm contacts for remote indication
- Weekly exercise programmable time clock
- Crank cycle
- Programmable automatic shutdown (minimum run timer)
- Programmable sequential start timer (delay start timer)

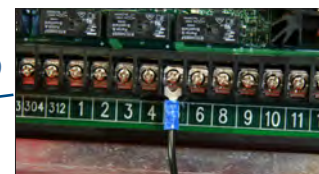
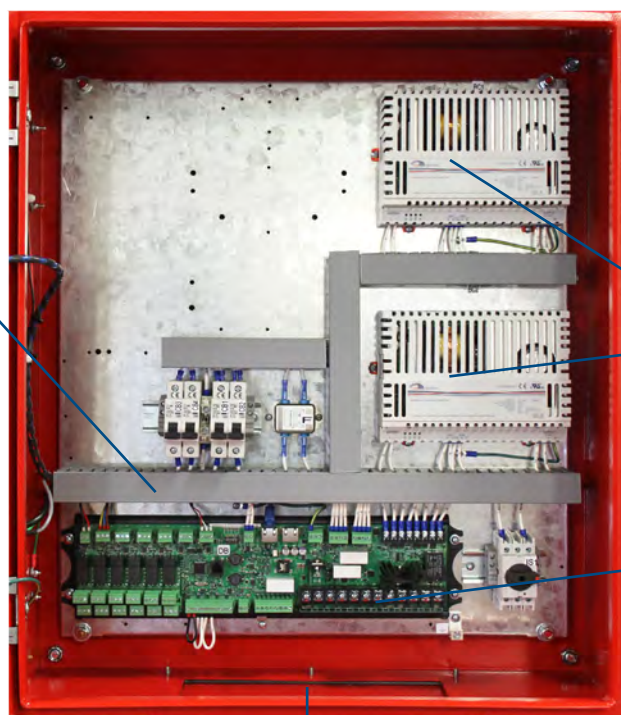
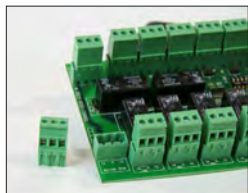
GPD



MODEL GPD



- 1 Alarm Bell
- 2 Externally mounted pressure transducer and run test solenoid valve with protective cover
- 3 Key lock
- 4 ViZiTouch V2 operator interface
- 5 Exterior USB Port (Interior USB port also supplied)
- 6 HAND-OFF-AUTO selector switch
- 7 Remote alarm contacts with removable terminals
- 8 Gland Plate
- 9 Automotive type engine connections
- 10 Battery chargers

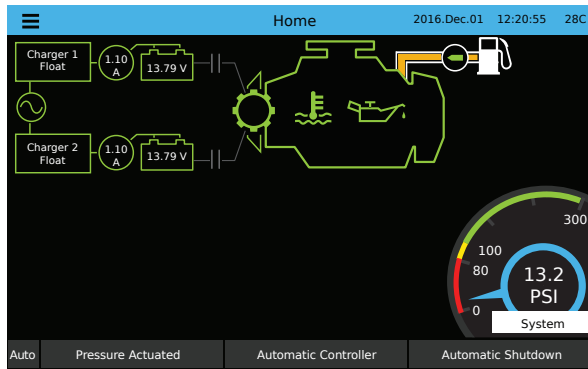


MODEL GPD



ViZiTouch V2 operator interface

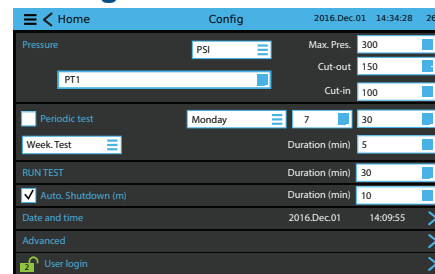
Home



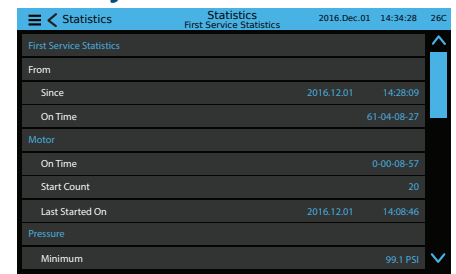
On-screen menu

- Home
- Alarm
- Configuration
- History
- Service
- Manual
- Languages

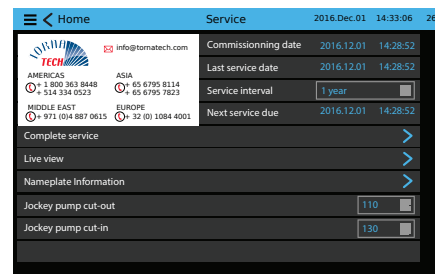
Settings



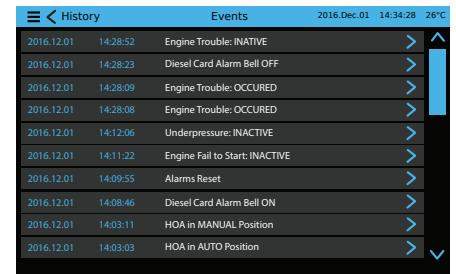
History/Statistics



Service



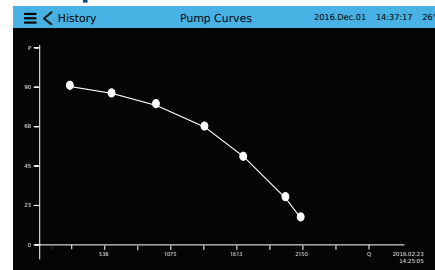
Events



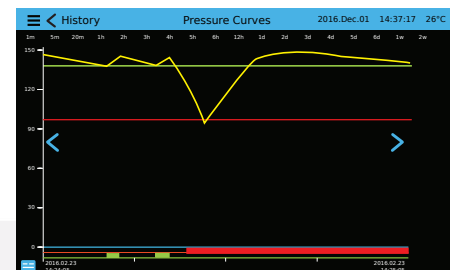
ViZiTouch V2 major features include:

- Touch screen operation with 7" color display and intuitive graphics
- Multi-language
- Upgradable software
- Password protected

Pump Curves



Pressure Curves



MODEL GPD

Shipping Weight & Dimensions				
	Wall Mount		Floor Mount	
Starting Voltage	Approx. dimensions in inches (mm)	Approx. Weight in Lbs (kg)	Approx. dimensions in inches (mm)	Approx. Weight in Lbs (kg)
12V.CD	27 ⁵ / ₈ " h x 27 ¹ / ₈ " w x 9" d (700 x 600 x 228)	70 (32)	47 ⁷ / ₈ " h x 27 ¹ / ₈ " w x 9" d (1208 x 600 x 228)	95 (43)
24V.CD				

How to order: GPD - 12 OR 24 VDC – 120VAC OR 208 to 240VAC - options
 Ex.: GPD - 12 - 220 – B1, C7

GPD



LISTEN • DEVELOP • LEAD

www.tornatech.com

Americas
 Europe
 Middle East
 Asia

Tornatech Inc. Head Office - Montreal, Quebec, Canada Tel.: + 1 514 334 0523 Toll free: + 1 800 363 8448 Fax: + 1 514 334 5448

Tornatech Europe SPRL - Wavre, Belgium Tel.: + 32 (0) 10 84 40 01 Fax: + 32 (0) 10 24 75 05

Tornatech FZE - Dubai, United Arab Emirates Tel.: + 971 (0)4 887 0615 Fax: + 971 (0)4 887 0604

Tornatech Pte Ltd. - Singapore Tel.: + 65 6795 8114 Tel.: + 65 6795 7823 Fax: + 65 6795 3201