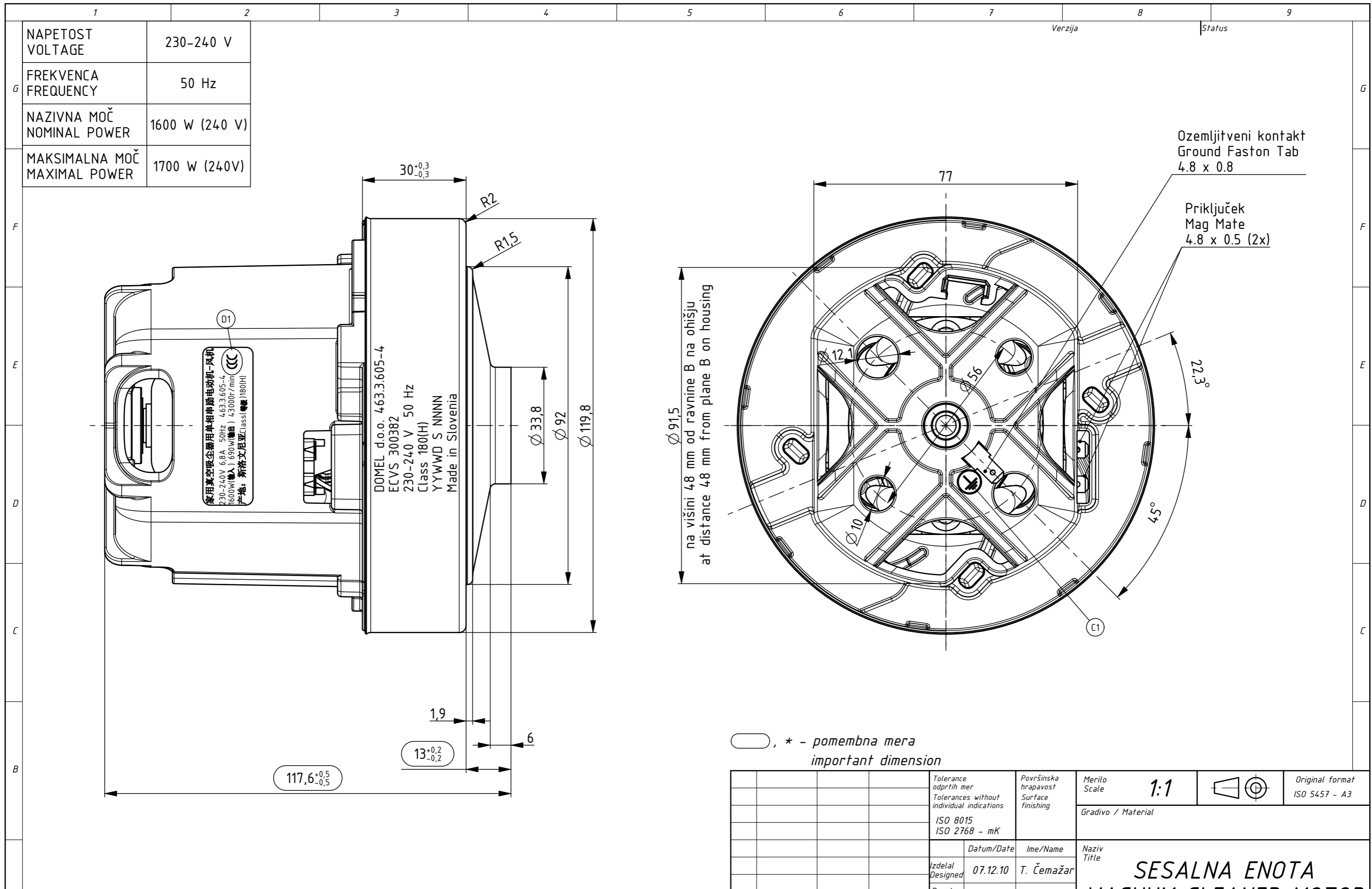


Izdelano s CAD/ProEngineer - ročno spreminjanje ni dovoljeno! Vsak prenos tretjim osebam ali uporaba v nedogovorjene namene ni dovoljena po zakonu o avtorskih pravicah. Made with CAD/ProEngineer - changing is not allowed! Any unauthorized copying of this drawing or unauthorized distribution of the information contained herein is prohibited.



, \* - pomembna mera  
important dimension

OSNOVNE ZNAČILNOSTI		TYPICAL CHARACTERISTICS	
IZVEDBA	ENOSTOPENJSKA	FAN SYSTEM	SINGLE STAGE
ULEŽAJENJE	DVA KROGLIČNA LEŽAJA	BEARINGS	DUAL BALL
VRSTA PRETOKA	SKOZI MOTOR	DISCHARGE	THRU FLOW
SMER VRTENJA	DESNA	DIRECTION OF ROTATION	CW

Tolerance odprtih mer Tolerances without individual indications ISO 8015 ISO 2768 - mK		Površinska hrapavost Surface finishing	Merilo Scale <b>1:1</b>	Original format ISO 5457 - A3	
Datum/Date			Gradivo / Material		
Izdelal Designed 07.12.10		Ime/Name T. Čemažar		Naziv Title <b>SESALNA ENOTA VACUUM CLEANER MOTOR</b>	
Pregl. Verified 22.03.19		Ime/Name B. Benedik			
D1	13863	22.03.19	T. Čemažar	Koda Code <b>463.3.605-4</b>	
C1	12050	19.10.15	D. Vrhunc		
B1	10787	28.05.13	D. Vrhunc		
A0	9835	13.04.11	T. Čemažar	List Sheet 3+	
Ozn. Mark		Št. obvestila Nr. of notice	Datum Date	Ime Name	Stran Page 1
<b>DOMEL</b>		Otoki 21, 4228 Železniki, Slovenija		4633605004_SESALNA_ENOTA	