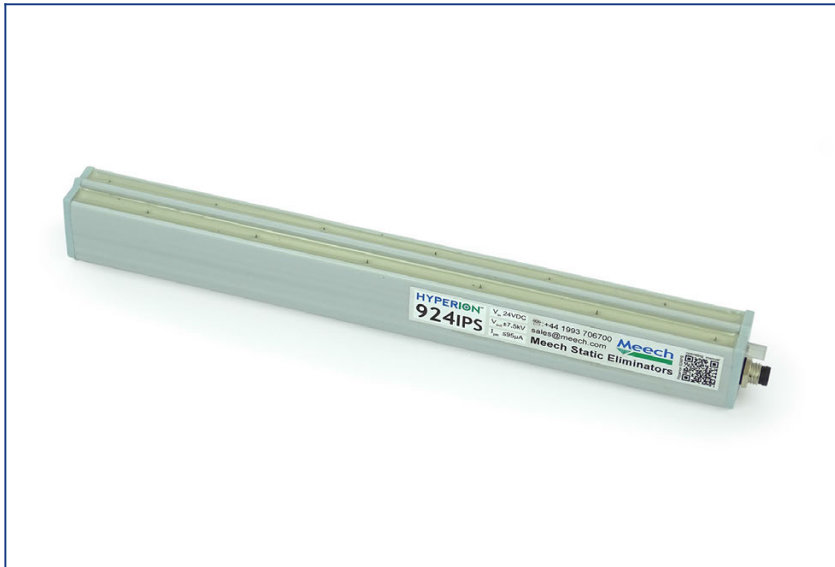


Hyperion 924IPS Short-Range Pulsed DC Ionising Bar



Product Code: 924IPS

Powered by 24V DC the Hyperion 924IPS is the most compact pulsed DC bar available on the market.

The 924IPS features Meech's Ion Current Monitoring (ICM) technology, this ensures performance is maintained with local and remote alerts when the bar needs cleaning.

Fully BarMaster compatible, the output voltage, frequency and balance can be adjusted. These features will help optimise the 924IPS for specific applications, including very sensitive applications such as RFID.

Features

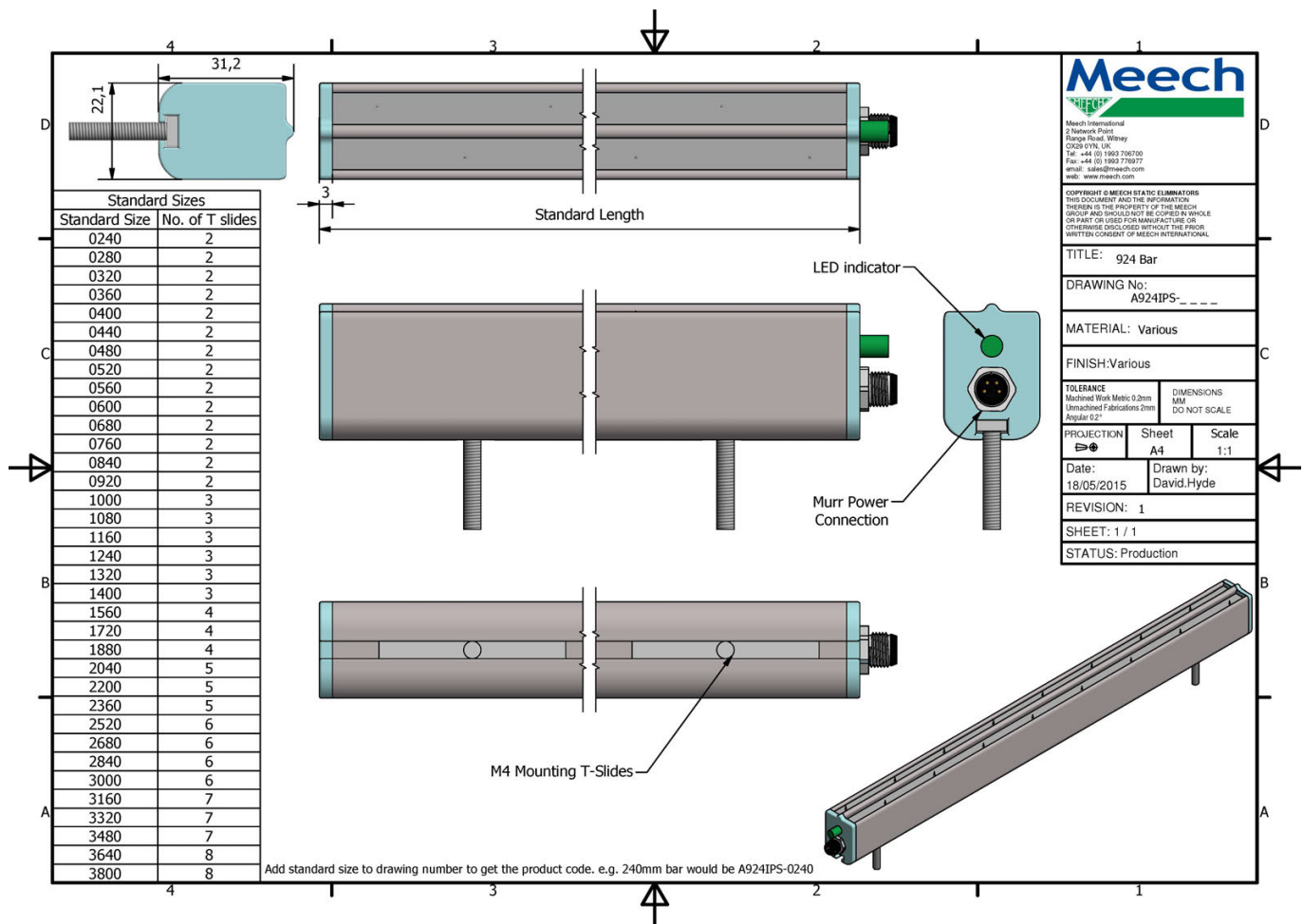
Benefits

Optimum Working Distance	20-200mm; suitable for short range applications, such as web paths on converting machinery, printing presses or applications that have traditionally used AC equipment.
Compact Size & Full Length Ionisation	At just 22mm (W) x 32mm (H), it will fit into tight installations. The bar is also designed to give full performance over its entire length.
Low Voltage Wiring	Requiring a 24V DC supply removes the need for high voltage wiring to the ionising bar.
Integrated Power Supply (IPS)	The integral pulsed DC power supply uses surface-mount high voltage components. This reduces the overall size of the bar, making it the most compact 24V DC bar available.
Adjustable Output	Output voltage, frequency and balance can be adjusted using the BarMaster programmer. Adjustable output optimises the bar for sensitive applications like RFID.
Adjustable Clean Pin Alert	Meech Ion Current Monitoring (ICM) technology detects when the 924IPS needs to be cleaned. The LED on the bar alerts operators of the need for cleaning. This ensures peak performance is maintained.
Environmental Protection	IP66 construction makes the bar suitable for harsh environments.
Remote Signal	An output signal will activate when the bar needs cleaning or a fault has been detected. This will alert operators remotely to check the bar.

Product shown in this document may be covered by one or more patents, patents applied for and/or registered designs and/or trade marks. For further information please refer to our Head Office or visit www.meech.com.

Technical Characteristics

Dimensions (W x H)	22mm x 32mm
Maximum Length	3960mm
Weight	0.5kg/metre
Construction	FR ABS
Mounting	'T' Slot with M4 x 20mm studs
Emitters	Sharp titanium pins
Input Voltage and Current	24V DC (21-27V DC) Max 500mA
Output Voltage	Adjustable, +/- 3 to 7.5kV pulsed DC
Electrical Connection	4 Pole M8
Output Frequency	Default: 20Hz (Adjustable with BarMaster)
Output Balance	Default: 54% Positive, 46% Negative (Adjustable with BarMaster)
Environmental Protection	IP66
Max Ambient Temperature	60°C
Certifications	CE, UL.



Product shown in this document may be covered by one or more patents, patents applied for and/or registered designs and/or trade marks. For further information please refer to our Head Office or visit www.meech.com.