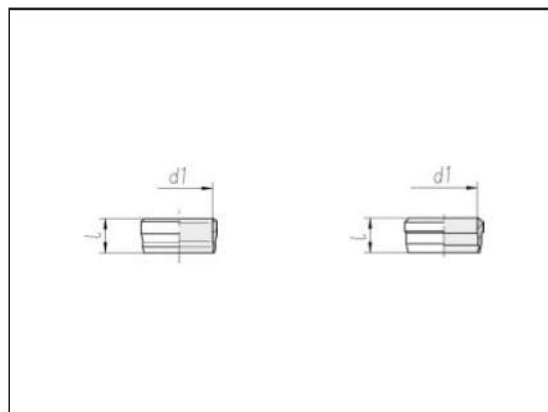


1S and 2S cutting rings



Series	l	Pressure	Order No.	Pressure	Order No.	Order No.
Tube OD			1S cutting ring		2S cutting ring	2SVA cutting ring
d1						
LL 4	6.5	PN 100	0 0 06 00 20 00*			
LL 5	7.5	PN 100	0 0 06 05 20 00			
LL 6	7.5	PN 100	0 0 06 10 20 00			
LL 8	7.5	PN 100	0 0 06 15 20 00			
L 6	8.8			PN 315	0 0 10 00 20 00**	0 0 10 00 60 00
L 8	8.8			PN 315	0 0 10 05 20 00	0 0 10 05 60 00
L 10	9.8			PN 315	0 0 10 10 20 00	0 0 10 10 60 00
L 12	9.8			PN 315	0 0 10 15 20 00	0 0 10 15 60 00
L 15	10.2			PN 315	0 0 10 20 20 00	0 0 10 20 60 00
L 18	10.2			PN 315	0 0 10 25 20 00	0 0 10 25 60 00
L 22	12.5			PN 160	0 0 10 30 20 00	0 0 10 30 60 00
L 28	12.5			PN 160	0 0 10 35 20 00	0 0 10 35 60 00
L 35	13.5			PN 160	0 0 10 40 20 00	0 0 10 40 60 00
L 42	13.5			PN 160	0 0 10 45 20 00	0 0 10 45 60 00
S 6	8.8			PN 630	0 0 10 00 20 00	0 0 10 00 60 00
S 8	8.8			PN 630	0 0 10 05 20 00	0 0 10 05 60 00
S 10	9.8			PN 630	0 0 10 10 20 00	0 0 10 10 60 00
S 12	9.8			PN 630	0 0 10 15 20 00	0 0 10 15 60 00
S 14	10.2			PN 630	0 0 10 20 20 00	0 0 10 20 60 00
S 16	10.2			PN 400	0 0 10 25 20 00	0 0 10 25 60 00
S 20	12.5			PN 400	0 0 10 30 20 00	0 0 10 30 60 00
S 25	12.5			PN 400	0 0 10 35 20 00	0 0 10 35 60 00
S 30	13.5			PN 400	0 0 10 40 20 00	0 0 10 40 60 00
S 38	13.5			PN 315	0 0 10 45 20 00	0 0 10 45 60 00

Cutting rings of tube OD 6 – 12 mm are identical in L + S series

* Sample product code, see: D04LLX
DIN 3861-ALL4-St

** DPR06LX
ISO 8434-1-CR-L6-St

