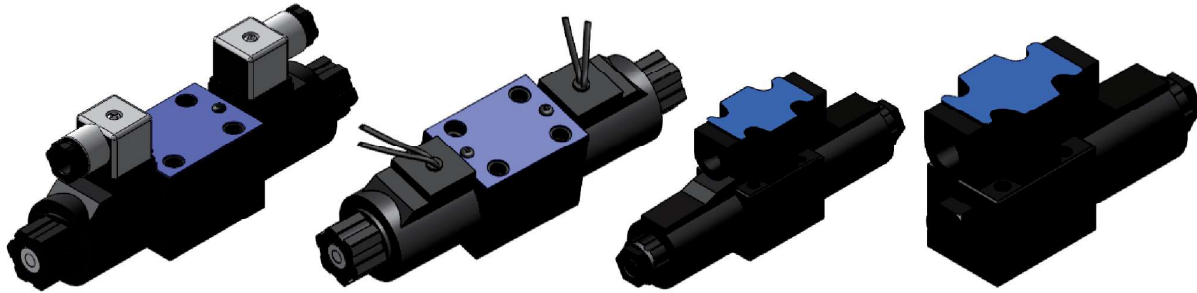


DIRECTIONAL VALVE



HTD	-01	-3C2	-D12	-YA	-B	
CODE	SIZE	DIAGRAM	VOLTAGE	HYDRO-TEK	TYPE	
HTD	01	CETOP-3	*	*	D	DIN TYPE
					B	BOX TYPE
					D12	12V DC
					D24	24V DC
A110	110V AC					
A220	220V AC					

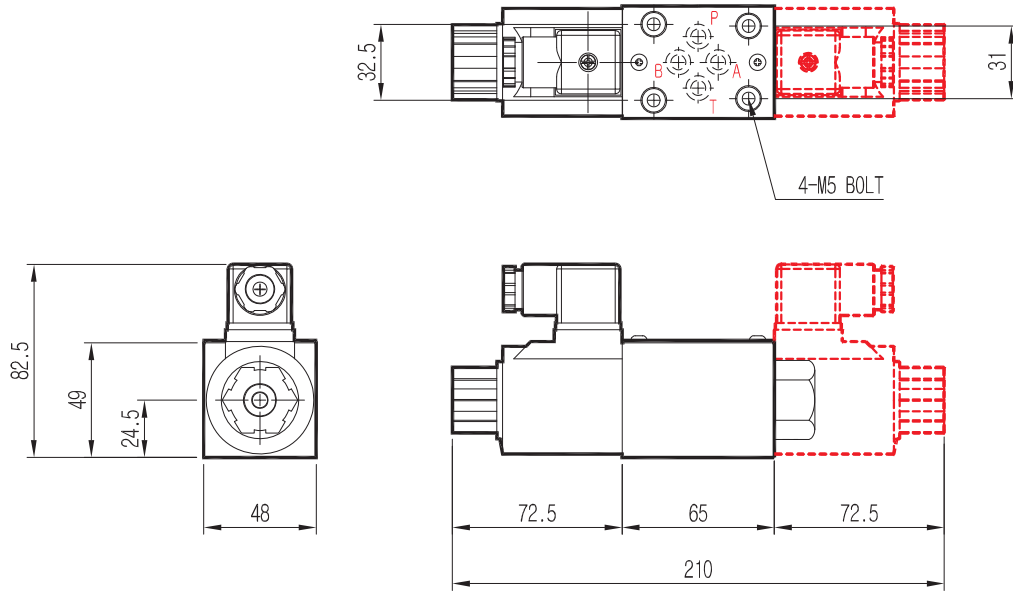
Note. Please refer to below diagram for more details of '*'

*	DIAGRAM	3C2	3C4	3C60	3C3	3C9
	HYDRO-TEK	YA	YP	YC	YO	YT
	3-POSITION					
	DIAGRAM	2B2BL	2B4BL	2B60BL	2B3BL	2B2
	HYDRO-TEK	HA	HP	HC	HO	HI
	2-POSITION					

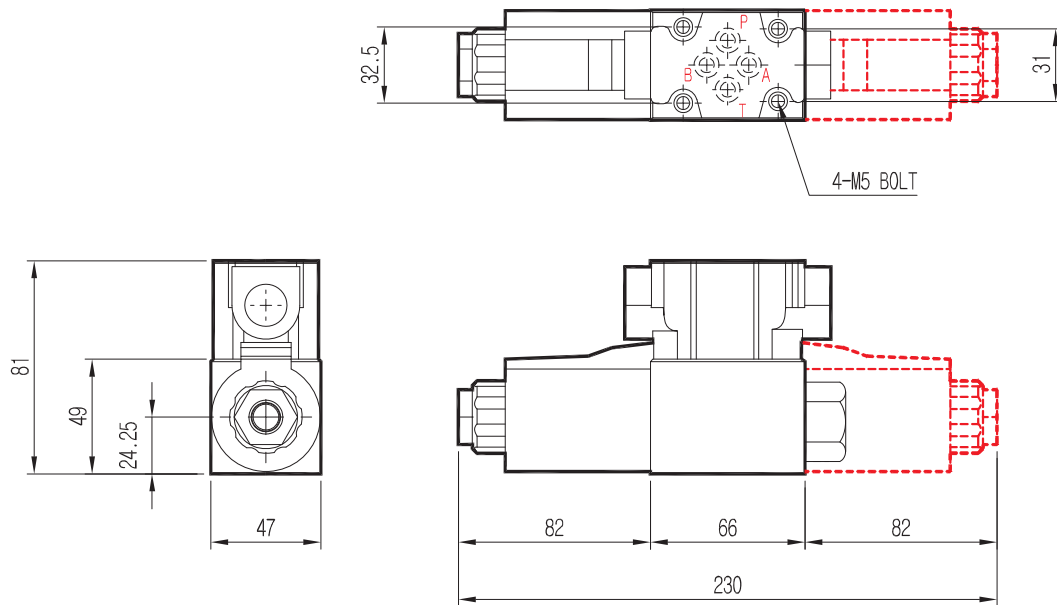
SPECIFICATION		FREQUENCY	VOLTAGE RANGE	PRESSURE	FLOW
	12V DC	50/60Hz	10.8~13.2V	Max. 315 kg·f/cm ²	Max. 63 l/min
	24V DC		21.6~26.4V		
	110V AC		99~121V		
	220V AC		198~242V		

01-SERIES

DIN TYPE



BOX TYPE



DIMENSION