



STAINLESS STEEL SPECIALTY VALVES

Model 18SPC10 - Pilot Operated Valve

3-WAY NC/NO/NU, 1/4" NPT, 150 PSI MAX

The 18SPC10 is a two position, three-way normally universal block and bleed, Pilot Supply pressure operated flow control valve assembly. It is designed to establish Supply to Valve flow automatically with each application of pilot signal pressure. Upon loss of pilot signal, the valve shifts to the supply blocked state.

A loss of operating Pilot Supply pressure will block the Supply (inlet) port and exhaust the accumulated operating pressure within the receiving control circuit.

Automatic Reset Relays or Pilot Operated Valves are generally used in pneumatic safety systems that require control sequencing or fail safe (fail closed) operation.

Flow Control Application: Normally Universal, 3-Way (Block & Bleed)

Operating Pressure: Valve Pressure 150 psi max; Pilot 30 – 60 psi

Connection Size (Body): 1/8" FNPT Pilot port; 1/4" FNPT - Supply, Valve & Exhaust Ports

Seal Material: Viton

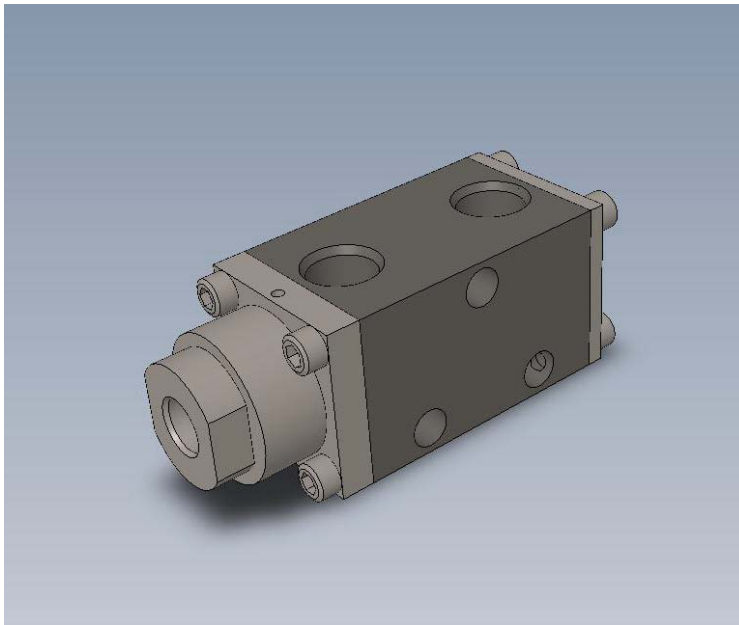
Media Service: Pneumatic or Hydraulic

Component Material: 316 Stainless Steel,

Weight: 1.25 Lbs.

Operating Temperature: -20° F to +250° F

Overall Dimensions: 4.62" L x 1-1/4" Square body



While this information is presented in good faith and believed to be accurate, Sigma Valves does not guarantee satisfactory results from reliance upon such information. Nothing contained herein is to be construed as a warranty or guarantee, expressed or implied, regarding the performance, merchantability, and fitness with respect to the products. Sigma Valves reserves the right, without notice, to alter or improve the designs or specifications of the products described herein.