



The Timken Company

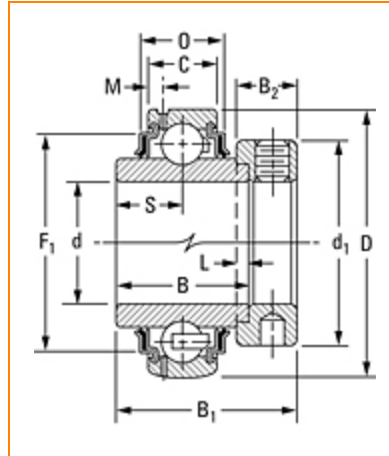
4500 Mt Pleasant St. NW

N. Canton, OH 44720

Phone: (234) 262-3000

E-Mail: CustomerCAD@timken.com • Web site: www.timken.com

Timken Part Number G1108KRR, Fafnir® Eccentric Locking Collar Ball Bearings



[Specifications](#) | [Dimensions](#) | [Basic Load Ratings](#)

Specifications

| | |
|------------------|---------------------|
| Shaft Size d | 1 1/2 in 38.1 mm |
| Bore Type | Cylindrical bore |
| Bearing Type | Ball Bearing |
| Material | Bearing Steel |
| Lubrication Type | Relubricatable |
| O.D. Type | Cylindrical OD |
| Dimension M | 0.160 in 4.06 mm |
| Dimension B2 | 0.720 in 18.3 mm |
| Series | Industrial |

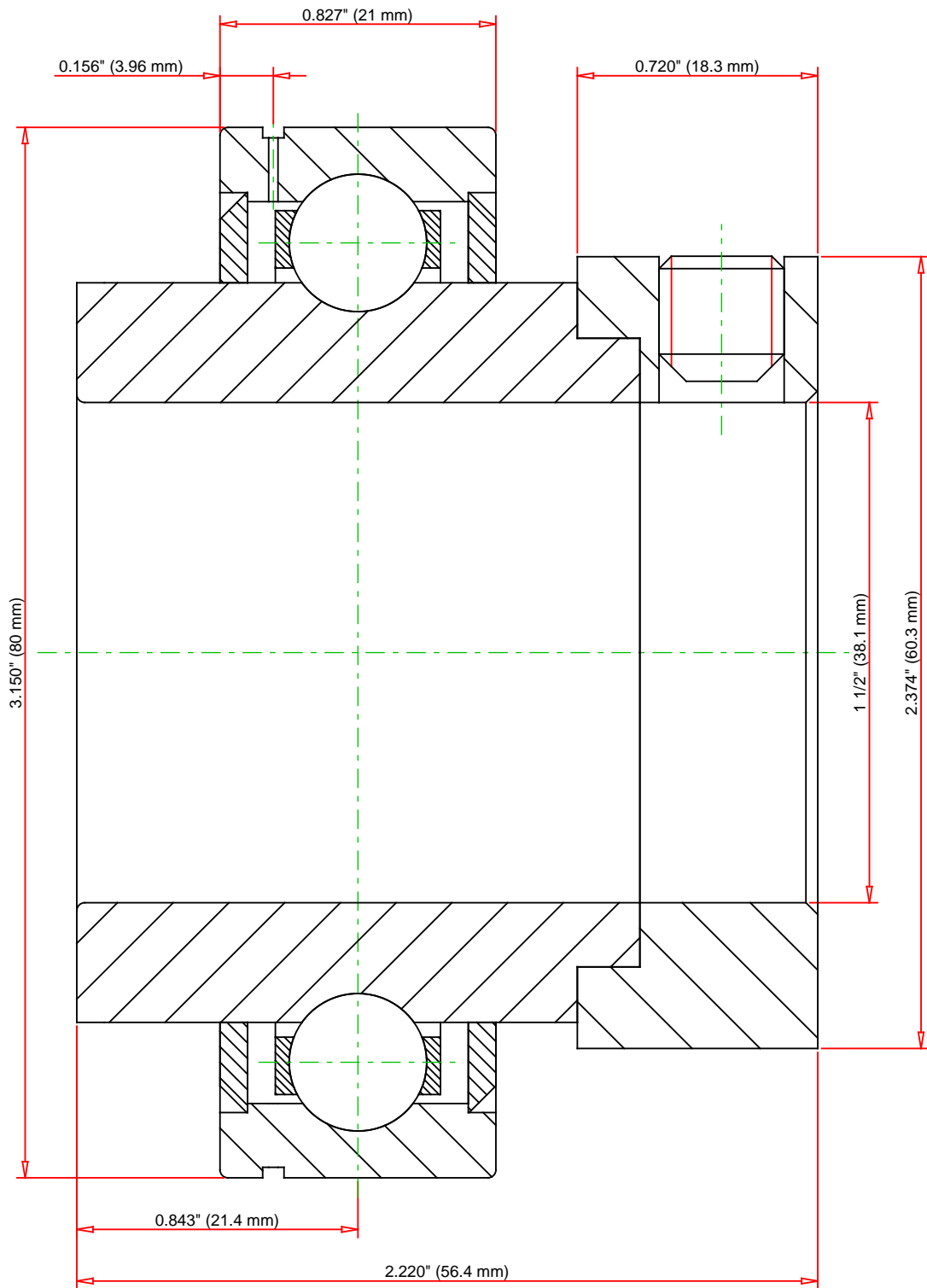
| | |
|-------------------|-------------------|
| Weight | 0.50 lb 0.2 Kg |
| Sub Series | G1...KRR |
| Seal Type | Shroud Seal |

Dimensions

| | |
|-------------------------------------|------------------------|
| Outside Diameter D | 3.1500 in 80.000 mm |
| Inner Ring Width B | 42.86 mm 1.687 in |
| Outside Ring Width C | 21.000 mm 0.827 in |
| Radius r | 0.6 mm 0.024 in |
| Center of Bearing from End S | 21.4 mm 0.843 in |
| Dimension S1 | 35 mm 1.378 in |
| Set Screw Size | 3/8-16 |
| Number of Set Screws | 2 |
| Angle between Set Screws | 90° |
| Dimension B1 | 2.220 in 56.4 mm |

Basic Load Ratings

| | |
|----------------------------|---------------------|
| Static Load Rating | 4460 lbf 19800 N |
| Dynamic Load Rating | 8130 lbf 36200 N |



| | | |
|--------|--------|--------|
| Weight | 0.5 lb | 0.2 kg |
|--------|--------|--------|

TIMKEN®

THE TIMKEN COMPANY
NORTH CANTON, OHIO USA

G1108KRR
Fafnir® Eccentric Locking Collar Ball Bearings

| | | |
|----------------------------|----------|---------|
| Basic Load Ratings - C_r | 8130 lbf | 36000 N |
| Load Ratings - C_{0r} | 4400 lbf | 19600 N |

Every reasonable effort has been made to ensure the accuracy of the information contained in this writing, but no liability is accepted for errors, omissions or for any other reason.

FOR DISCUSSION ONLY