

TCP2RS+

RS-232 / 485 - Ethernet
converter

*More powerful, more versatile,
more industrial!*

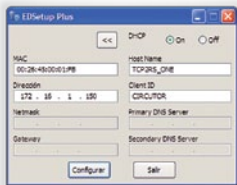


Features

TCP2RS+ is a gateway aimed at conversion of the physical medium Ethernet to RS-232 or RS-485, or vice versa. The equipment is fitted with a Web Server, from which the user programmes the device configuration parameters.

1! More powerful

TCP2RS+ is a converter with a high reliability, stability and robustness of use. It can work in fix IP mode, and even in DHCP mode through identification using the name.



2! More versatile

TCP2RS+ is designed to work in different communication modes: **UDP**, **TCP** and **Modbus/TCP**.

In addition, the equipment has routing functions to develop topologies RS-232/485 on existing Ethernet infrastructures (Figure 2).

The selection of the protocol of network series (RS-232 or RS-485) is performed using a software through the configuration of the Web Server.

- *Easy access to configuration Web Server*
- *Interface RS-232 or RS-485 can be selected using software*
- *Multiple communication protocols*
- *Ethernet connection RJ45 10/100BaseTX*
- *Connection of up to 32 equipments on the bus (RS-485)*
- *Compatible with any other market application (PS/ PSS)*

3! Más industrial

TCP2RS+ es el único conversor del mercado con alimentación multi-rango (85...290 Vc.a. / 120...410 Vc.c.) y fijación a carril DIN en tan sólo 2 módulos.



Fig. 1. Master-slave standard function

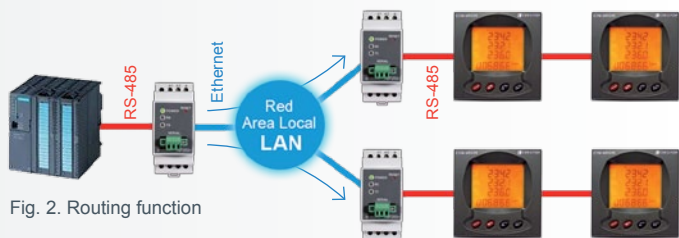


Fig. 2. Routing function

Technical features

TCP2RS+

Type	Code
TCP2RS+	M54033

Versatile power supply

power supply voltage	85...290 V AC, 120...410 V DC
----------------------	-------------------------------

Communications

Ntework protocol	TCP / UDP / Modbus/TCP
------------------	------------------------

Ethernet	10 BaseT / 100 BaseTX Ethernet (RJ45) autodetectable
----------	---

Speed	4800...115 200 bps
-------	--------------------

Data bits	7 / 8
-----------	-------

Stop bits	1 / 2
-----------	-------

Parities	pair, odd, none
----------	-----------------

Configuration	HTTP/JSON/DHTML
---------------	-----------------

Software	Upgradeable from the web
----------	--------------------------

Diagnosis LEDs	Power, RX, RT, FULL/ HALF (Ethernet), ACTIVITY, 10M/100M / LINK
----------------	---

Environmental conditions

Standard temperature	-10 ... +60 °C
----------------------	----------------

Storage temperature	-40 ... +85 °C
---------------------	----------------

Degree of protection	IP 20
----------------------	-------

Humidity without condensation	5 ... 95%
-------------------------------	-----------

Maximum altitude	2000 m
------------------	--------

Security

Class III category / **EN 61010**

Double-insulated electric shock protection class II

Standards

IEC 60664, VDE 0110, UL 94, EN61010-1, EN55011, EN 61000-4-2,
EN 61000-4-3, 61000-4-11, EN 61000-6-4, EN 61000-6-2, EN 61000-6-1,
EN 61000-6-3, EN 61000-4-5, CE

www.circutor.com

CIRCUTOR, SA - Vial Sant Jordi, s/n
08232 Viladecavalls (Barcelona) Spain

Tel. (+34) 93 745 29 00 - Fax: (+34) 93 745 29 14

central@circutor.es

