

WHEN ORDERING SPECIFY LEAD LENGTH A, LEAD LENGTH B AND PIPE THREAD.

PTTUT-6E-11341 (360-9308)

TAG No. : TE-521
TE-523
TE-524

REVISIONS

| REV | DESCRIPTION | DATE | ECO | DR | APPD |
|-----|-------------|------|-----|----|------|
|-----|-------------|------|-----|----|------|

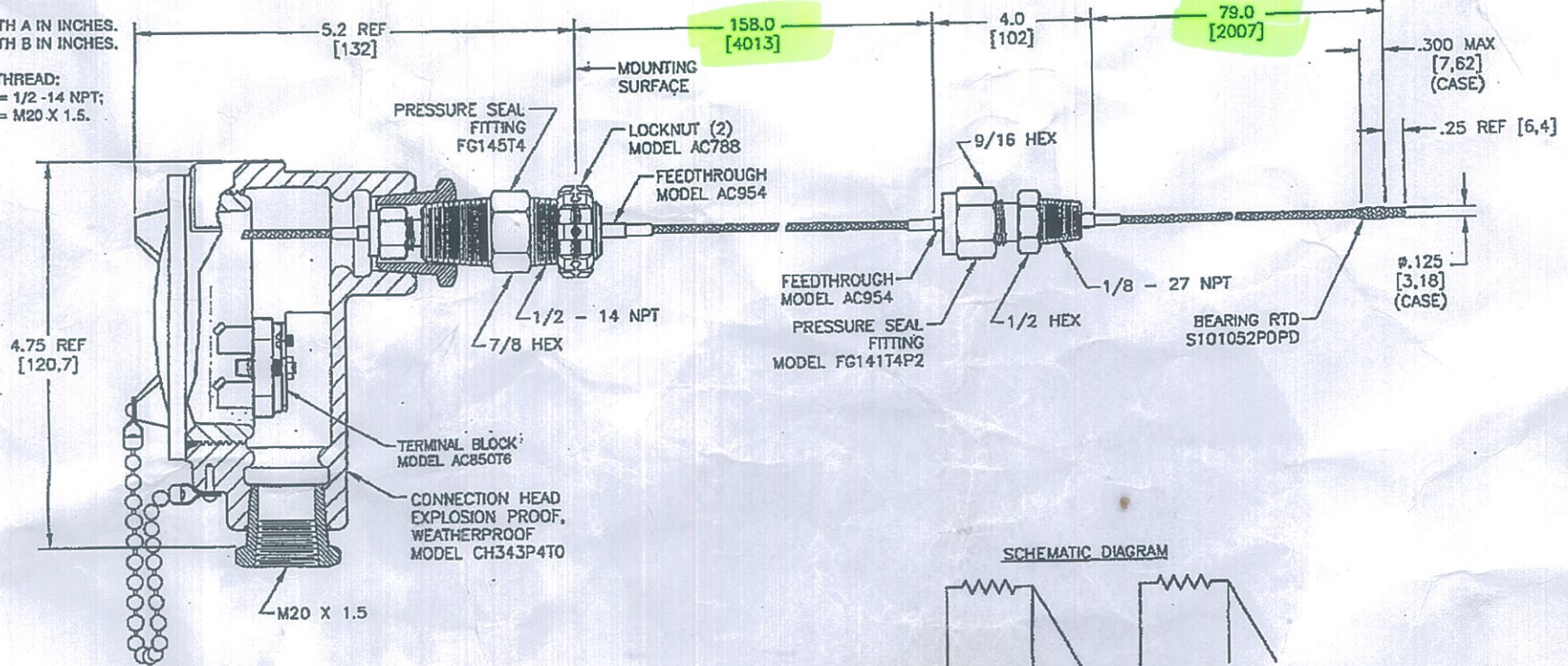
XAS103283PDPDA168B79P5 ← EXAMPLE OF MODEL NUMBER MAKEUP

XAS103283 SPECIFICATIONS DRAWING NUMBER.

PDPD SENSING ELEMENTS:
PDPD = PLATINUM.

A158 LENGTH A IN INCHES.
B79 LENGTH B IN INCHES.

P5 PIPE THREAD:
PS = 1/2 -14 NPT;
PS = M20 X 1.5.



- ELEMENTS (2): PLATINUM.
- RESISTANCE OF EACH ELEMENT: 100.00 OHMS $\pm 1.2\%$ (100.12/99.88) AT 0°C (32°F). LEADWIRE RESISTANCE IS EXCLUDED. RESISTANCE-TEMPERATURE CHARACTERISTIC IS DEFINED BY R/T TABLES #5-100 (°C) AND #6-100 (°F).
- TEMPERATURE RANGE: -50°C TO 260°C (-58°F TO 500°F).
- INSULATION RESISTANCE: 10 MEGOHMS MINIMUM AT 100 VOLTS DC, LEADS TO CASE, BETWEEN ELEMENTS AND LEADS TO STAINLESS STEEL BRAID.
- LEADS: AWG #30, STRANDED, TFE INSULATED, WITH STAINLESS STEEL BRAID OVERALL.
- CASE: COPPER ALLOY, TIN PLATED.
- THE RESISTANCE THERMOMETER WILL MEET THE RESISTANCE-TEMPERATURE RELATIONSHIP AND TOLERANCES SPECIFIED IN EN 60751 (IEC 751), CLASS B.

| UNLESS OTHERWISE SPECIFIED DIMENSIONS AND TOLERANCES IN INCHES DIMENSIONS IN () ARE IN MILLIMETERS | | INITIALS | DATE | ITEM | RECD | PART/STOCK NO | MATERIAL DESCRIPTION |
|---|---------------------------|-------------|----------|---------------|----------|---------------|--|
| ONE PLACE (.0) | $\pm .020$ [± 0.51] | DR | 04-16-07 | | | | MINCO www.minco.com COMPANY CONFIDENTIAL PROPRIETARY INFORMATION OF MINCO PRODUCTS, INC. DO NOT DUPLICATE |
| TWO PLACE (.00) | $\pm .010$ [± 0.25] | ENGR | | | | | |
| THREE PLACE (.000) | $\pm .005$ [± 0.13] | QA | | | | | |
| ANGLS: | | PRD | | | | | |
| | | USED ON | | | | | |
| MATERIAL: | | CATEGORY 04 | | ITEMS 1 AND 2 | | ASSY 734-4 | XAS103283 REV - |
| FINISH: | | INT. JOB NO | STOCK NO | SCALE | DRG SIZE | CAGE IDENT. | |