



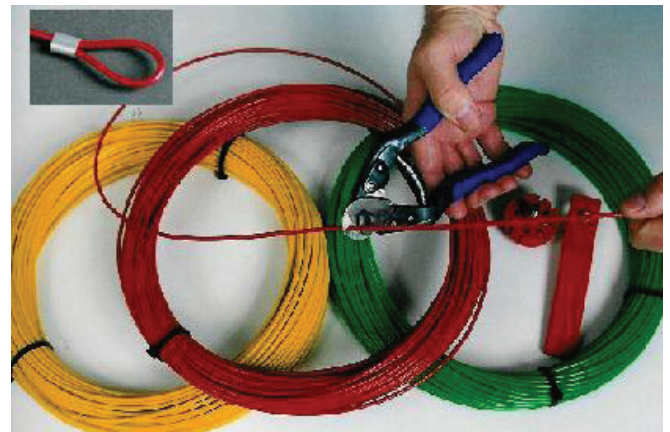
**Pro-Lock Safety Limited**  
Reusable Cable Lock for the:  
**Ball Valve, Gate Valve, Butterfly Valve, and Needle Valve,**  
**All with or without padlocks or security seals.**

Patent No. GB2304795  
Proved in the North Sea, Used Worldwide

Already used by : Accordis - Amec - Amerada Hess - BP Worldwide - British Gas - Ciba - Conoco - GlaxoSmithkline  
Premier Oil - Haliburton - Huntsman - Nynas - Royal Mint - SBM - Shell - Syngenta - Texaco - Chevron - Total  
Dow Corning - US Navy - National Oil Well

**Multi Stranded PVC Coated, Galvanised Wire can be cut to any length**

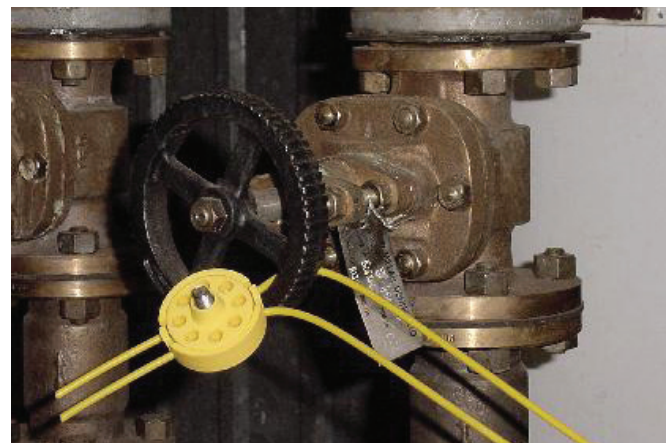
Pro-Lock, Valve lockout is a Universal system, that can complement or even replace, high priced security seals, padlocks and chains. Ideal for the isolation of most types of valves, industrial machinery, and many other items, Pro-Lock is molded from Atofina PPC 9760, an impact copolymer polypropylene. It is UV stabilized and all internal parts are manufactured from stainless steel. Pro-Lock is used in conjunction with PVC coated, multi stranded, galvanised, steel wire, supplied, either cut to the required length, or left on the roll as required.



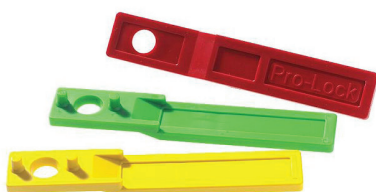
Part No. Wire R50 / G50 / Y50  
Red/Green/Yellow

**Gate Valve Isolation**

Thread the cable through the valve handle. Pro-Lock is designed to be locked on to this cable using the special tool provided. For added security, Pro-Lock can be used in conjunction with padlocks or security seals



PR-01XSYS



**Pro-Lock Operating Tools**

PR-01TL R/G/Y  
Red/Green/Yellow

## Reusable

Originally designed as a cost effective solution, to lock any type of valve in aggressive offshore environments, Pro-Lock is tough and extremely versatile, Function testing has been carried out between -55degC and +55degC with no noticeable reduction in performance. Pro-Lock offers a reliable, alternative to expensive or more difficult to use lockout products such as padlocks, chains and security seals.

Each Pro-Lock is supplied with 1.5 meters of multi-stranded galvanized steel wire (optimum length for valve locking applications). This is PVC coated for added weather protection and increased visibility. This wire may be supplied cut to lengths of 1.5M, and looped at one end for added versatility, or left on roll (50M) as required. (Note: Heavy duty Angular type cutters are required for cutting the wire.) If the cable is purchased on the roll, Aluminium or Copper ferrules can be supplied to fashion loops on customised lengths. These can be either be tapped in position using a small hammer or pressed into position using various means. (Note2: The loop is useful, but not essential).



PWC - HD1

## How Pro-Lock Works

No threading of wire is necessary. The wire is slotted in from the side. The top section of the lock is hand tightened to secure the cable on to the valve. The Pro-Lock is then slid along to the optimum position, much like the knot of a neck tie, then locked onto the cable using the Pro-Lock Operating Tool.

Ball valve locking pins can be supplied to prevent movement and to enable the secure locking of those ball valves, that don't have a drilled valve handle through which to secure the cable. See pic opposite.

## Audco Valve Isolation



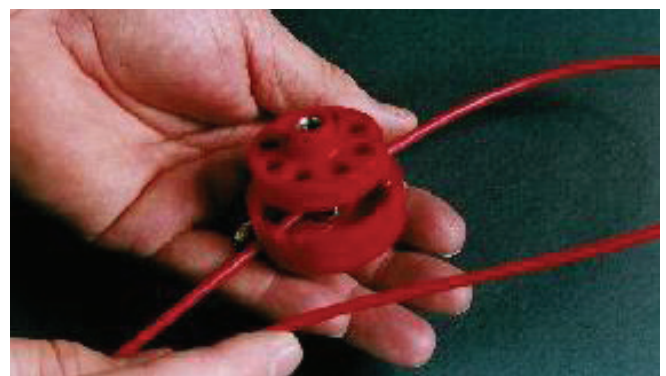
PR-01XSGS

## Butterfly Valve Isolation



PR-01XSRS

Ensure Butterfly Valves are locked out securely and efficiently



PR-01XSRS

## Ball Valve Isolation



PR-01XSYS + Locking Pin

Optional use of padlocks (maximum 6mm shackle diameter) or seals for evidence of tamper.



PR-01XSRS + (SEAL)



PR-01XSRS + Recommended Padlock. Pad - M32

Recently re-introduced to the Pro-Lock range, the ALL 316 STAINLESS STEEL, Pro-Lock and Cable, with Brass Ferrules either end of the uncoated Cable.

**Part No. PR-04XS**



Designed for use in Extreme Conditions, unsuitable for the Polypropylene version.

A Stainless Steel Operating Tool is also available

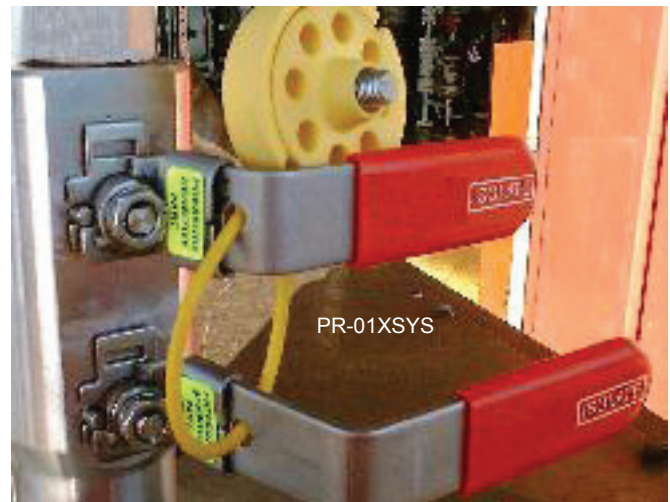
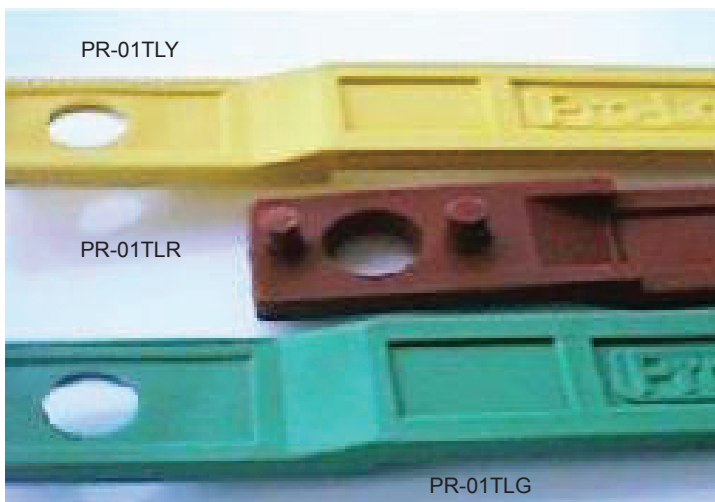
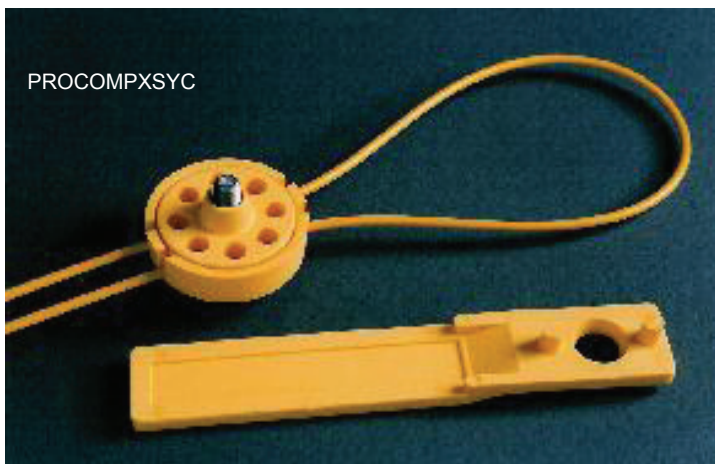
**Part No. PR-04TL**



### **Lockout Benefits**

- Cost effective Reusable, lightweight and reliable
- Easy to use Even when wearing gloves, no keys or cable threading necessary
- Durable Simple, sturdy and highly resistant to corrosion and impact damage
- Secure Even without a lock or seal, an operating tool is needed to remove it
- Versatile Suitable for locking most valves

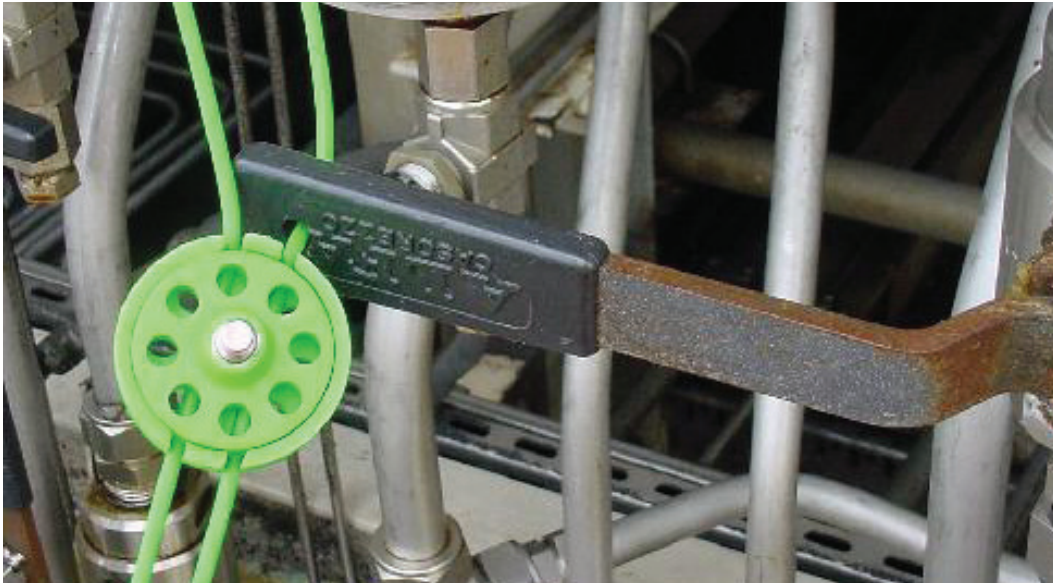
Compare Pro-Lock with other Lockout Systems



# Ball Valve Lockout

Reusable Cable Lock for the:  
Ball Valve and More All with or without padlocks or security seals.

Pro-Lock ball valve lockout provides a secure method for isolating ball valves and most other valve types.

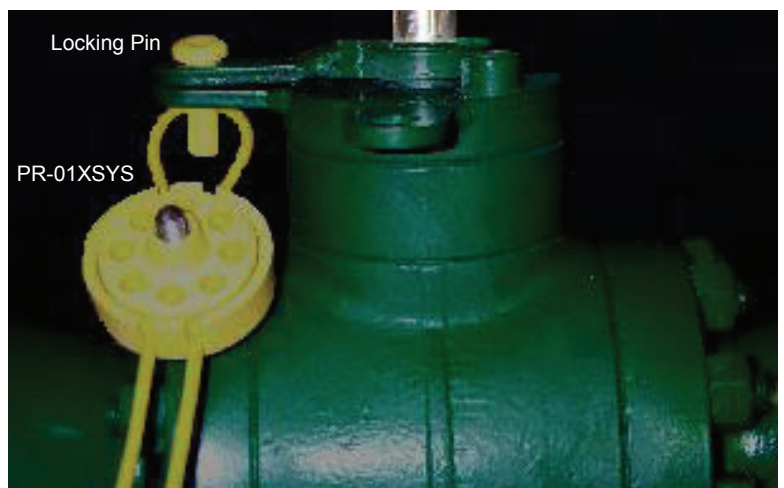


PR-01XSGS

Pro-Lock ball valve lockouts secure the handles of the valves and prevent them from being turned, either in the on or off position. Pro-Lock valve lockouts are durable and will not rust or corrode as they are molded from polypropylene and contain only stainless steel internal parts.

Ideally a ball valve handle will be supplied pre-drilled. If not Pro-Lock, only requires a 4mm hole to be drilled at a suitable point. If this is not possible use Pro-Lock ball valve locking pins (supplied in three sizes) as in the picture below.

Pro-Lock ball valve lockouts are available in red, green, and yellow for easy identification of the employees using the devices, the contents of the pipework being isolated, or whether the valve is locked open, closed or part of a wider isolation.



Locking Pin

PR-01XSYS



PR-01XSRS

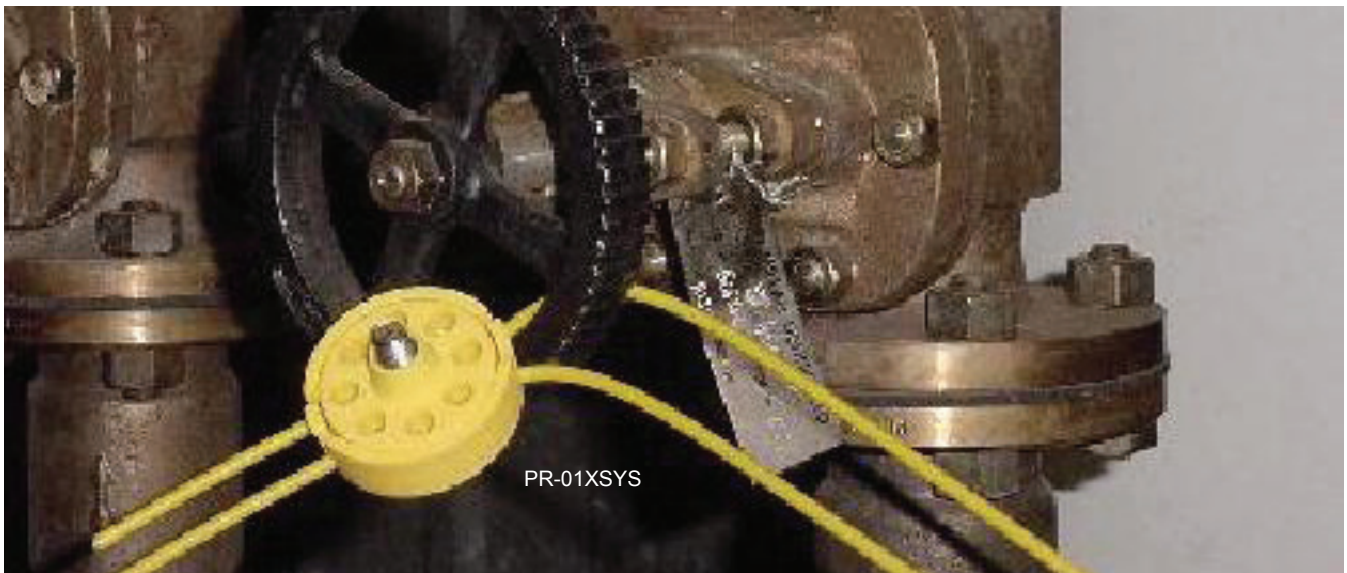
SS-01R

Optional use of padlocks (maximum 6mm shackle diameter) or seals for evidence of tamper.

# Gate Valve Lockout

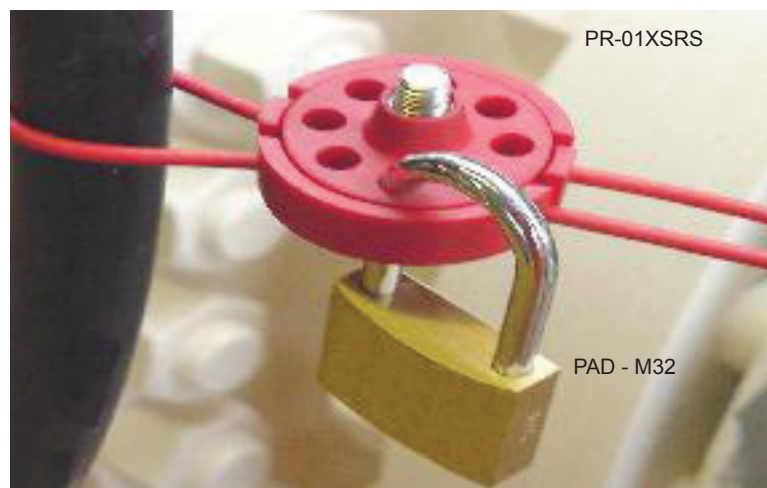
Reusable Cable Lock for the:  
Gate Valve and More, All with or without padlocks or security seals.

Pro-Lock Gate valve lockout provides a secure method for isolating gate valves and most other valve types.



Pro-Lock gate valve lockouts secure the handles of the valves and prevent them from being operated. Pro-Lock valve lockouts are durable and will not rust or corrode as they are molded from polypropylene and contain only stainless steel internal parts.

Pro-Lock gate valve lockouts are available in red, green, and yellow for easy identification of the employees using the devices, the contents of the pipework being isolated, or whether the valve is locked open, closed or part of a wider isolation.



# Butterfly Valve Lockout

Reusable Cable Lock for the:  
Butterfly Valve and More, All with or without padlocks or security seals.

Pro-Lock butterfly valve lockout provides a secure method for isolating butterfly valves and most other valve types.



Pro-Lock Butterfly valve lockouts secure the handles of the valves and prevent them from being operated. Pro-Lock valve lockouts are durable and will not rust or corrode as they are molded from polypropylene and contain only stainless steel internal parts. Ideally a butterfly valve handle will be supplied pre-drilled. If not pro-Lock, only requires a 4mm hole to be drilled at a suitable point.

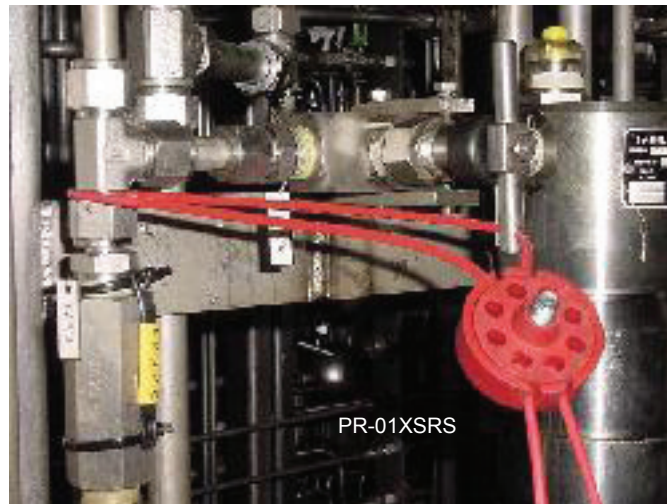
Pro-Lock butterfly valve lockouts are available in red, green, and yellow for easy identification of the employees using the devices, the contents of the pipework being isolated, or whether the valve is locked open, closed or part of a wider isolation.



# Needle Valve Lockout

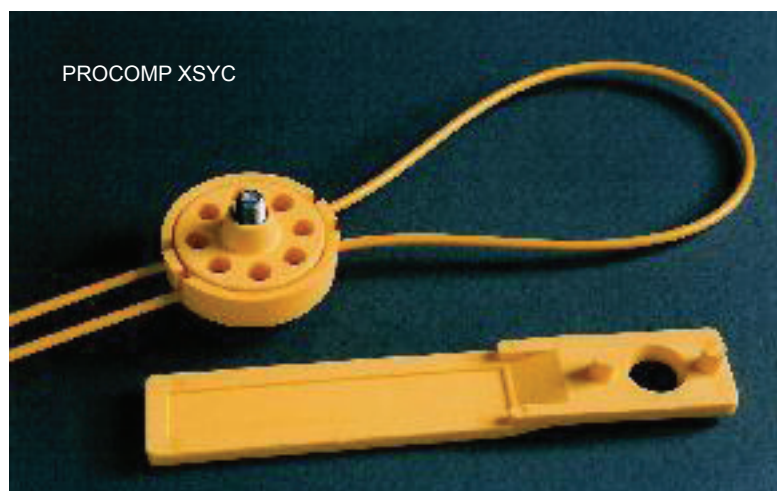
Reusable Cable Lock for the:  
Needle Valve and More, All with or without padlocks or security seals

Pro-Lock Needle valve lockout provides a secure method for isolating needle valves and most other valve types.



Pro-Lock Needle valve lockouts secure the handles of the valves and prevent them from being operated. Pro-Lock valve lockouts are durable and will not rust or corrode as they are molded from polypropylene and contain only stainless steel internal parts. Ideally a needle valve handle will be supplied pre-drilled. If not Pro-Lock, only requires a 4mm hole to be drilled at a suitable point.

Pro-Lock Needle valve lockouts are available in red, green, and yellow for easy identification of the employees using the devices, the contents of the pipework being isolated, or whether the valve is locked open, closed or part of a wider isolation.





# THE BEST SOLUTION FOR VALVE LOCKOUT



**PRO-LOCK™**

## WHY PRO-LOCK ?

Valve Comparison - Pro-Lock Benefits

### Chains

#### Difficulties

Not user friendly

Heavy, Present Manual Handling issues.

Often stored in a tangled heap cut to varying lengths

Difficult to thread through small openings

Difficult to adjust the length and fit - Always require additional padlocks.

#### Benefits

The ideal solution, used with high security padlocks, for remote unmanned locations to prevent vandalism, and theft from pipelines and vessels.

### Padlocks

#### Difficulties

Can be susceptible to corrosion in salty environments

Can be prone to failure in cold conditions

Expensive

Useful in the home, so susceptible to pilfering

Keys can be lost

User unfriendly; Often difficult to read lock and key numbers

#### Benefits

Ideal for electrical switchgear. The only solution if you wish to uniquely lock each isolated item. Can be used in addition to most lockout systems. However, the Pro-Lock system is the only system which is capable of being used with or without a padlock.

A selection of High Quality British made Padlocks are available from Pro-lock

# Miscellaneous lockout devices

## Difficulties

Mostly only lock individual valve types, Expensive, Difficult to use.

Gate valve Lockout Device



Those that lock more than one valve type are Expensive. Although good quality and innovative, the prices are prohibitive compared to other systems. See the python and hybrid cable locks below:



Python cable lock



Hybrid Lockout Device

Some can be difficult to assemble and user unfriendly. See the ball and Butterfly valve lockout devices below:



Ball valve lockout



Butterfly valve lockout

## Benefits

Possibly can be justified when small numbers are required for infrequent isolations, however, see how the Pro-Lock valve lockout system also works for the above applications at a fraction of the cost.

# One use disposable Cable Seals

## Difficulties



Can be Expensive for Valve Lockout Quality

Disposable, Can only be used once.

Sometimes need two or three for one valve, which are often cut off after a short time

Can be susceptible to corrosion in salty environments

Keys can easily be lost. People tend to pick up a handful but then do not use them all. This soon results in a box of seals and no keys

Can be difficult to use when wearing gloves

Sequential numbers can be difficult to read when new, and impossible after a few weeks in position

Can Create waste, and cause housekeeping issues

Can incur frequent more shipping costs because they are only used once

## Benefits

More cost effective than the systems so far described, however, see how Pro-lock also works for the above applications at a fraction of the longer term cost.

Can be cost effective for very long term isolations. For this reason we offer a selection of both aluminum and zinc cast bodied cable seals



## Benefits

Secure - even without lock or seal, an Operating Tool is needed to remove. Locks most types and size of valve.

Cost effective - once purchased, no further lock-off expense, a better investment than disposable, environmentally unsustainable alternatives

Lightweight - when used in industrial environments, an operator carrying a length of wire and bag of Pro-Locks can lock-off numerous valves..

Durable - an all stainless steel and Polypropylene construction.

Can be used without padlock security seal if desired.

Padlocks can be used in conjunction with the Pro-Lock, thus retaining the advantage of dispensing with chains.

Pro-Lock can be tightened by hand - the most effective way of securing the valve or other item determined, before finally locking tight with the dedicated tool.

The wire is introduced from the sides, so avoiding the difficulties of threading wires with worn or splayed ends.

Pro-Locks and wire are available in different colors to allow differentiation between locked open and locked closed valves. The Multi Stranded galvanised wire is PVC coated for added weather protection and increased visibility.

## Difficulties

Pro-Lock is the best valve lockout device on the market, however, it is not primarily an anti-theft device. If you want to lock up your bike, then select either a padlock and chain or the python lock shown here. This does, however, make Pro-lock less likely to be pilfered from the work place.

## Summary

Pro-Lock has an enormous range of possible applications - on construction sites, in industrial environments and, of course, in the offshore and petrochemical industries.

Easy to use, reliable and extremely hard wearing, Pro-Lock is one of the most effective and versatile locking systems currently available. For maximum security applications, the most cost efficient lock-off combination is Pro-Lock, steel wire, and a numbered security seal. Isolation details can be written on security seal, thereby eliminating the need for high cost labels.

# OPERATING INSTRUCTIONS

**1. Use the Pro-Lock with the PVC coated steel wire provided, cut to the required length.**

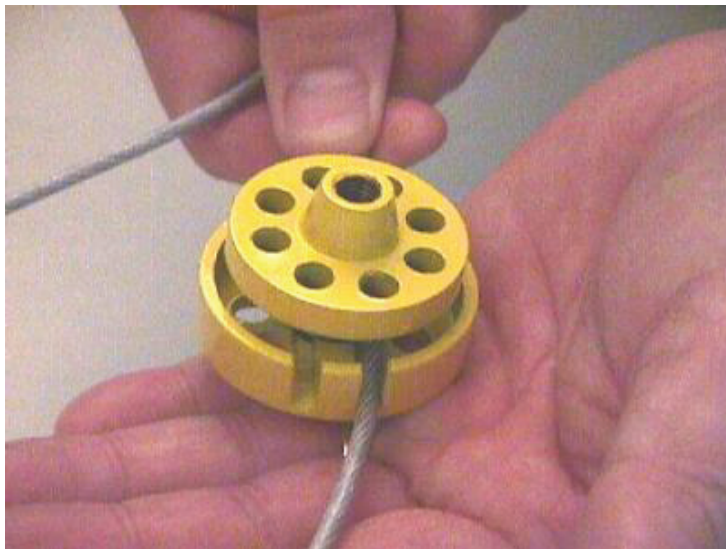
**Note: To avoid possibility of minor cuts from the potential frayed cable ends:**

**a) When cutting PVC cable, be sure not to leave any protruding steel cable beyond PVC coating (Use sharp cutters).**

**b) As added protection against this, it is recommended, that when securing pro-Locks that protective gloves are worn.**

**2. Secure the object to be locked with the wire.**

**3. Unscrew the top of the Pro-Lock far enough to enable introduction of the wire from the sides.**



**4. Slot the wire into the lock (No threading of wire is necessary)**

**5. Screw down the top, hand tight.**

**6. Slide the Pro-Lock to the optimum position (much like the knot of a neck tie)**

**7. Hard tighten using the Operating Tool provided..**

**8. For added security fit padlocks or security seal, as necessary.**

# Pro-Lock Valve Lockout System

## PRO-LOCK SPECIFICATION

Injection Moulded from Atofina, an impact copolymer polypropylene (PPC 7650). Excellent Impact Resistance. Applications include automotive articles, e.g. car bumpers, battery cases, etc.

Material Tested to Industry standards over a wide range of temperatures (See ISO Test results below).

Successful Independent Operational, and drop tests carried out on the Pro-Lock device between -55degC and +55degC. No significant deterioration in strength or problems with operation noted.

Resistance to oils and greases.

UV stabilized.

## Material Testing: Atofina PPC 7650

Property	Unit	Test Method	Value
Tensile Strength at yield	MPa	ISO 527-2	26
Flexural Modulus	MPa	ISO 176	1400
Tensile Modulus	MPa	ISO 527-2	1500
Elongation at Yield	%	ISO 527-2	10
Izod Impact notched at 23°C	KJ/m2	ISO 180	9
Izod Impact notched at -20°C	KJ/m2	ISO 180	5.5
Charpy Impact Strength notched at 23°C	KJ/m2	ISO 179	10
Charpy Impact Strength notched at -20°C	KJ/m2	ISO 179	5
Hardness Rockwell - R-scale		ISO 2039-2	85
Melting Point	°C	ISO 3146	165
Vicat Softening Temperature 10N-50°C per hr	°C	ISO 306	145
Density	g/cm2	ISO 1183	.905
Bulk Density	g/cm2	ISO 1183	.525

## **Internals**

M8 x 30mm 304/S15 Stainless Steel bolt

M8 x 16mm Torq thru insert, or M8 nut, fabricated from 303 Stainless Steel.

## **Wire Rope**

Specification to BS 302 1987

2.5mm Diameter, PVC Coated to 3.5mm

7 strands

Minimum breaking load of wire 435kgs

Safe Working Load 87kgs

Note: SWL applies to rope only. Pro-Lock is not a lifting device.

# Special Pro-Locks

**Regular and Hex Headed Pro-Locks, both slightly larger, to accommodate Heavy Duty Padlocks up to 8.5 mm Hasp provides a secure method for isolating most valve types.**

Pro-Lock Larger valve lockouts secure the handles of the valves and prevent them from being operated. They are durable and will not rust or corrode as they are molded from polypropylene and contain only stainless steel internal parts.

Pro-Lock gate valve lockouts are available in red, green, and yellow for easy identification of the employees using the devices, the contents of the pipework being isolated, or whether the valve is locked open, closed or part of a wider isolation.

Operating Spanners are available for the Hex Headed pro-Locks if required. The Cone Headed version can be operated with the standard Pro-Lock Operating Tool



## Reusable Cable Lock for :

**Most Valves and More All with or without padlocks or security seals.**

**The Stainless Steel Pro-Lock** provides a secure method for isolating valves where the Standard Polypropylene Pro-Lock may prove unsuitable

Pro-Lock Stainless Steel valve lockouts secure the handles of the valves and prevent them from being operated. Stainless Steel lockouts are durable and resist rust or corrosion. They are designed for extreme environments where the standard Pro-Lock may be deemed unsuitable.





# Versatile COMPUTER SECURITY from PRO - LOCK

## Secure your Laptop or Desktop PC with Pro-Lock ( Works for other items too )

Originally designed for use in aggressive offshore environments, Pro-Lock is tough and extremely versatile. Pro-Lock is Locked on to the cable using the dedicated Pro-Lock Operating Tool. It can be used with or without padlocks. These can be supplied “Keyed to differ”, “Keyed Alike” or “Combination Type”.

Use either the standard 1.5M or 2.5M looped cable, supplied to secure an object up to 2.3M from your fixed **anchoring point** - Brass or Poly

Each Pro-Lock is supplied with multi-stranded galvanized lightweight aircraft cable, PVC coated for increased visibility. This cable is supplied cut to lengths of either 1.5M or 2.5M, and looped at one end for added versatility. Extra rolls of 50M can be supplied to cut if required.

(Note: Heavy duty Angular type cutters are required to cut the cable.)

If the equipment to be protected does not already have a suitable place to attach the cable, or it is not practical to drill a 4mm hole, to thread the cable through, we can supply an additional securing device.

Anchorpoint (Brass, Nickel Plated)

Supplied with; two screws to enable the device to be fixed to a PC VGA Port, two self tapping and wood screws for any other surface. Once the cable is passed through the device, the screws cannot be accessed.

**Email or phone for our best prices**



PROCOMPXSRC



PWC-HD1



Anchorpoint

# Pro-Lock Valve Lockout

## Environmental Testing

# DERA

---

MARITIME NAVIGATION SYSTEMS  
DERA FRASER  
Fort Cumberland Road  
Portsmouth  
PO4 9LJ

RESULTS SUMMARY  
Of Environmental Testing for  
PRO -LOCK UK  
of  
PRO-LOCK SECURITY DEVICES

DERA/S&E/SPS/MNS/R/NTT-17/01

Date:-17TH April 2001

Pro-Lock UK  
60 Princes Way  
Fleetwood  
Lancashire  
FY7-8DB



TESTING  
NO 1217  
ENVIRONMENTAL TESTING  
OF  
PRO-LOCK SECURITY DEVICES

# Table of Contents

1. Introduction
  2. Customers Requirement
  3. Environment & Consumption
  4. Test Procedure
  5. Conclusions
- Photographs

## **1. Introduction:**

1.1 Maritime Navigation Systems Group (MNS) DERA Fraser Portsmouth, part of the Defence Evaluation and Research Agency, is an independent shoreside test laboratory equipped to conduct Type Approval and Prototype Testing of Marine Navigational and Safety Equipment.

1.2 The Test Laboratories at DERA Fraser have been Accredited by the United Kingdom Accreditation Service (UKAS) for Performance and Environmental testing on a wide range of Marine Navigational and Safety Equipment.

## **2. Customers Requirement:**

Pro-Lock UK supplied DERA Fraser with a quantity of the Polypropylene version of their security devices. Both Standard and Standard Plus versions of the device were supplied for testing. The customer required the devices to be tested to selected temperature extremes with the addition of a drop/shock test to be conducted on the devices at the temperature extremes.

## **3. Environment:**

3.1 The devices were environmentally tested to the following temperatures:

3.1.1 +550 C

3.1.2 -550 C

## **4. Test Procedure: -550 C Test**

4.1 Four devices plus spanners and tools were placed in an Astell Chamber and the chamber reduced in temperature to -550 C. This temperature was maintained for 24hrs after which the devices were removed and a functional test conducted. This entailed locking and unlocking both versions of the device using the tools from the sub zero environment.

## **Drop Test**

4.2 The devices were then subjected to a drop test. They were dropped from a height of 1.5metres onto a steel plate. This was repeated three times on each of the four devices, spanner and tools. After each drop a functional test was conducted.

## Shock Test

4.3 The devices were then subjected to a shock test. They were swung overhead and struck against a steel plate. This was repeated six times on each device. After each shock a functional test was conducted.

## +550 C Test

4.4 The locking devices were returned to ambient temperature, as was the Astell Chamber and the chamber increased in temperature to +550 C. This temperature was maintained for 24hrs after which the devices were removed and a functional test conducted. This again entailed locking and unlocking both versions of the device.

## Drop Test

4.5 The devices were then subjected to a drop test. They were dropped from a height of 1.5metres onto a steel plate. This was repeated three times on each of the four devices, spanner and tools. After each drop a functional test was conducted.

## Shock Test

4.6 The devices were again subjected to a shock test. They were swung overhead and struck against a steel plate. This was again repeated six times on each device. After each shock a functional test was conducted.

## 5. Conclusions:

5.1 The items of Pro-Lock equipment that have undergone the tests detailed in this document continued to function satisfactorily and sustained no visible damage that impaired their performance.

Test Engineer & Summary Originator: - R A Sharp

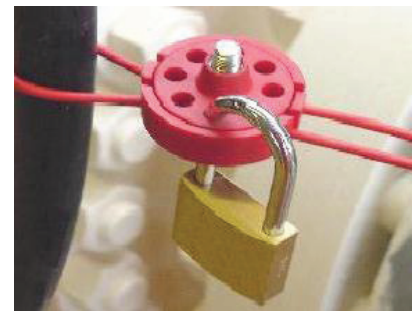
Position: - Head of Test



# LOCKOUT PADLOCKS FROM PRO - LOCK

Our range of British made brass padlocks are ideal for use in lockout/tagout systems

- Padlock bodies and keys numbered as standard.
- Padlock numbers recorded for each customer to avoid duplications to site on future orders.
- Over 30,000 individual locking mechanisms available (enough for most lockout/tagout systems!)
- Rustproof brass bodies and shackles. (Steel shackles can be supplied upon request).
- Padlocks can be made to your specific keying requirements.
- All our brass padlocks are British made.



## 3 Standard keying options

**Padlocks to Differ** - each padlock is keyed differently, supplied with 2 keys per lock. 30,000 individual padlocks available



**Padlocks Keyed Alike** - each padlock is keyed the same 1 key will open all padlocks



**Padlocks Master & Differ** - each padlock is keyed differently, supplied with 2 keys per lock. A master key will override and open any of these padlocks. 1000 individual padlocks available on 1 master key. 8 different master keys available



# LOCKOUT PADLOCKS FROM PRO - LOCK



- Durable, lightweight with non-conductive Xenoy lock bodies
- High security 6 pin cylinder lock, upto 100,000 different locking mechanisms
- 1 key to each lock
- Key retaining ensures that padlocks are not left unlocked
- 8 different colour options available for clear identification
- Standard “Do Not Remove” label and write on property labels included front and back
- Can be engraved if required
- 38mm wide x 44mm bodies, vertical shackle clearance 38mm, shackle diameter 6.4mm
- Lock & key number records for this range can be maintained by Reece Safety upon request

**These Xenoy lockout padlocks are ideal for lockout applications.**

Available with 2 standard keying options, keyed to differ or keyed alike. Other keying options can be made upon request.

**Email or phone for our best prices**

# Stainless Steel Padlocks Hasps

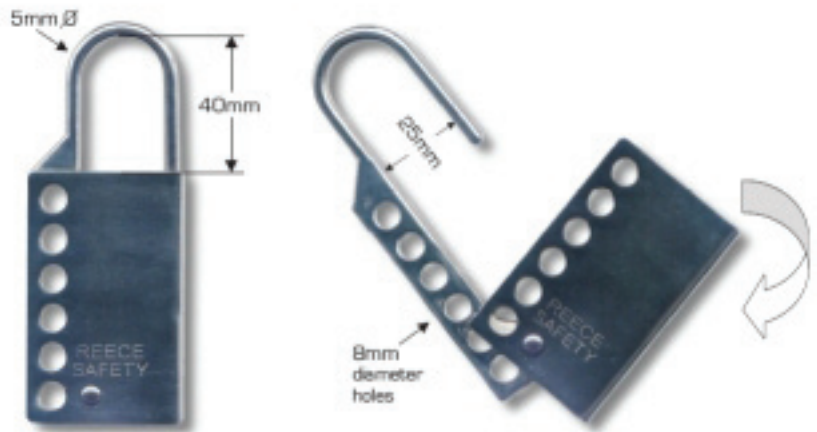


Stainless steel body/shackle  
5 pin high security cylinder mechanism  
Double ball bearing locking deadlocking  
Key retaining when shackle is open  
40mm body, vertical shackle clearance 51mm,  
shackle diameter 7mm  
Lock & key number records are not maintained by  
Reece Safety for this range  
Supplied with random locking mechanism

**This marine grade padlock is fully manufactured from stainless steel and designed to be used in very harsh/aggressive environments**

## MLH1 Stainless Steel Hasp

Manufactured from 316 stainless steel with a bright, durable nickel plated finish. Ideal for use in all industrial environments. Hasp clearance 40mm high x 25mm wide, hasp diameter 5mm. Accepts padlocks with shackles upto 8mm diameter



## MLH2 Steel Lockout Hasp

Scissor action lockout hasp manufactured from plated steel, with 45mm x 32mm & 19mm diameter jaws. Overall length 137mm. Accepts padlocks with a shackle diameter up to 11mm.

Stainless Steel Lockout Hasp with Stainless Steel Chain  
Our popular MLH1 Stainless Steel lockout hasp can be supplied with a stainless steel chain attachment making them suitable for valve isolation or for securing next to isolation points. Being fully stainless steel this hasp can withstand the extremes of all industrial environments.



# Numbered Seals for Valve Lockout

## SECURITY SEALS

( 2mm, and 3.8mm diameter) from PRO-LOCK

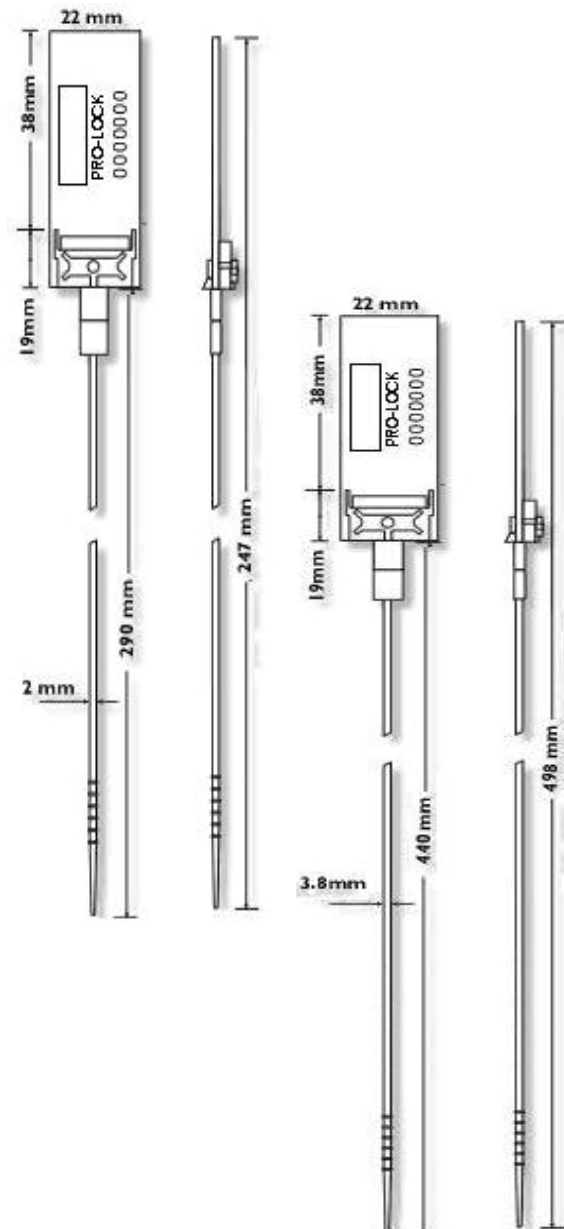
Polyprop Security Seals - Zinc Cast Cable Seals - Aluminium and Stainless Steel Cable Seals

### The SS-01 ® Security Seal

is an adjustable polypropylene seal, which can complement the Pro-Lock Valve Lockout System, or be used for a variety of other applications.

### Features

- Suitable for a wide range of applications.
- (2mm) diameter tail fits small sealing apertures.
- Integral metal clip provides a high level of security.
- Easy to pull-up.
- Matted format; ten seals per mat.
- Patented clip mechanism for ease of application and added security





**Seals 3.8mm:**

Pro-Lock Part No: SS-01RHD, GHD, or YHD for Red/  
Green/Yellow

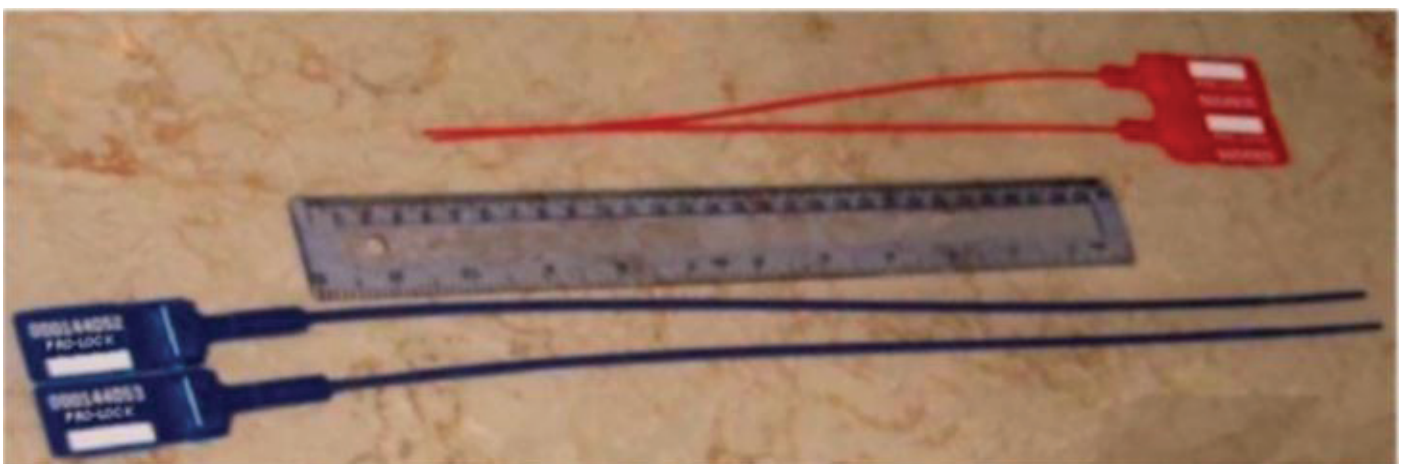
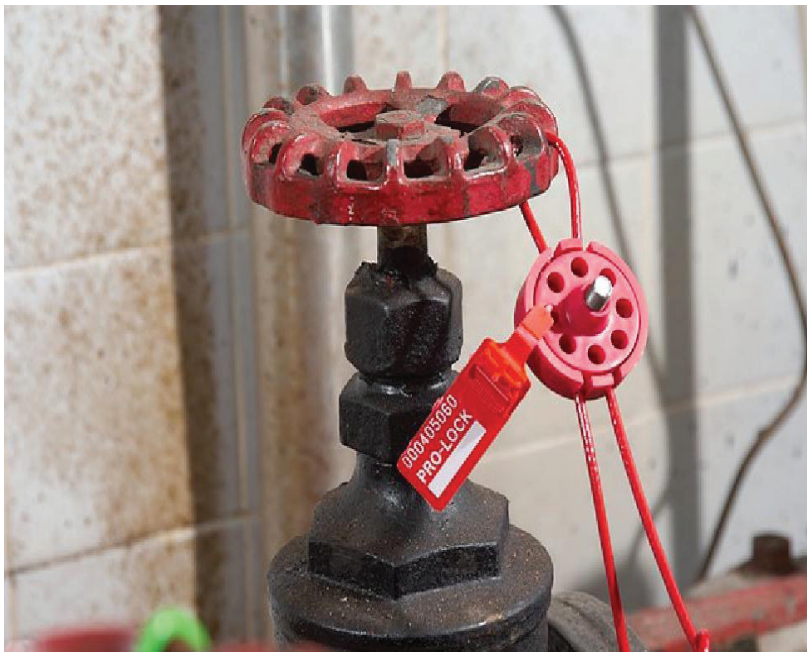
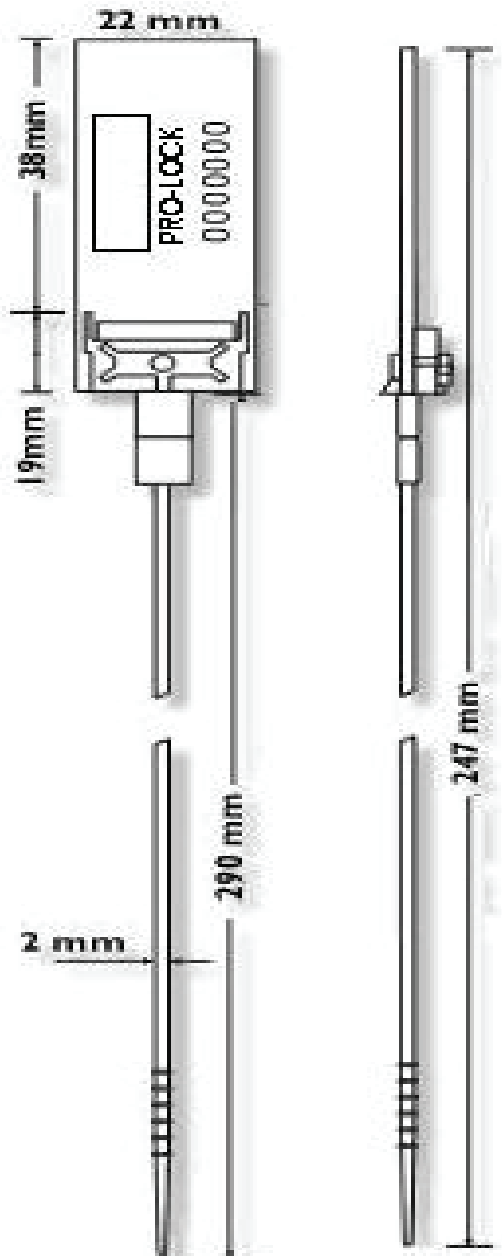
**Packaging**

Carton Dimensions, Weight, and Numbers:

Seals 2mm:

56cm x 24cm x 16cm, 3.2 kgs, Mats of 10,  
Boxes of 1000.

Gross Weight 3.5 kgs

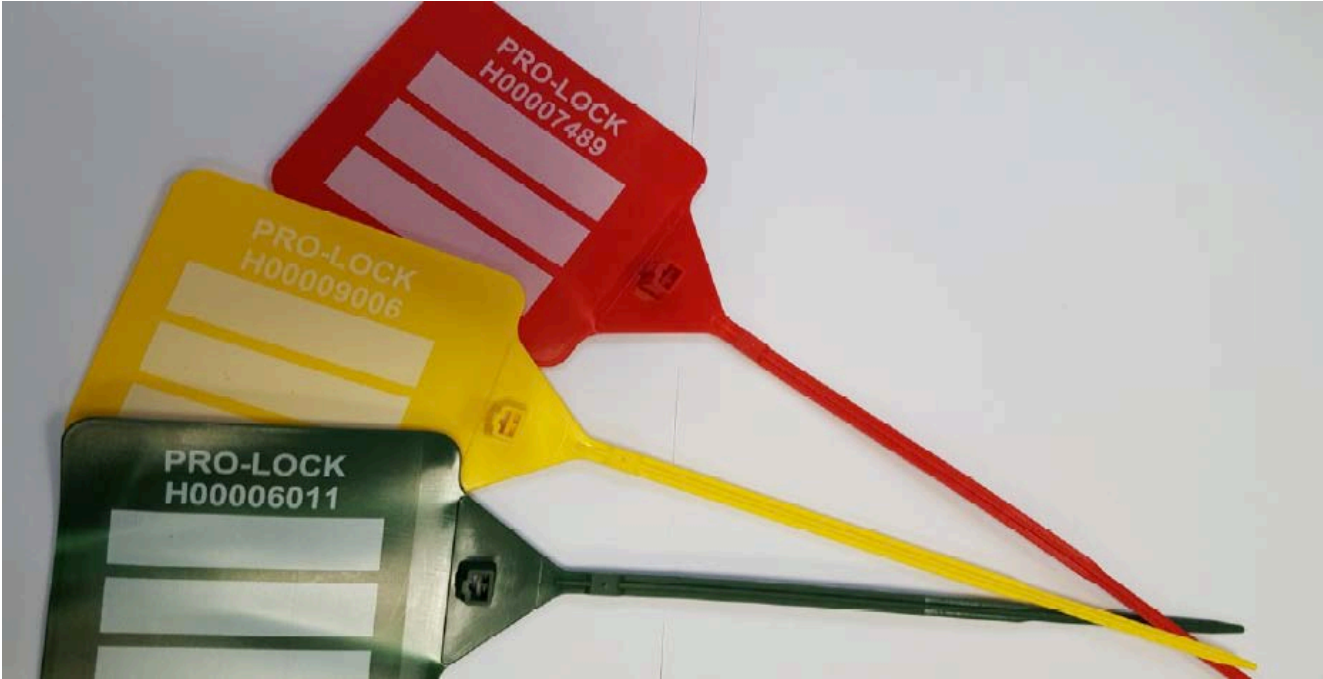


# New Product- SSHE-002 ® Security Seal

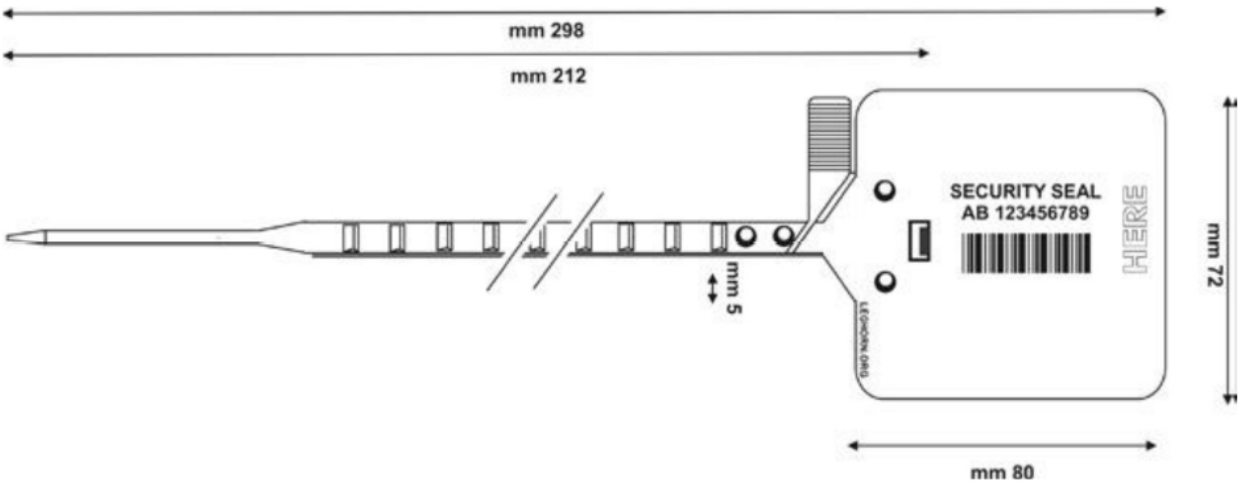
## The SSHE-002 ® Security Seal

An adjustable polypropylene seal, which can complement the Pro-Lock Valve Lockout System, or be used for a variety of other applications.

SIZE Width: 5 mm (13/64") Length: 298 mm (11" 47/64") Label: 72 x 80 mm (2" 53/64" x 3" 5/32")



Available in Red SSHE-002R Green SSHE-002G Yellow SSHE-002Y Sold in boxes of 500  
56cm x 40cm x 20cm Weight 4.5KG Price £0.23 per seal



# Numbered Seals for Valve Lockout ISOLATION TAG / SEALS

## The SSTL-003® Security Seal

is an adjustable polypropylene seal, which can complement the Pro-Lock Valve Lockout System, or be used for a variety of other applications. Available from Stock in ORANGE only.

### Material

Polypropylene

### Dimensions/Decoration/Printing

Adjustable security seals

SEAL CLOSURE WITH METAL INSERT

For added security pull through the length of the seal as far as possible

Material: polypropylene, high density co-polymer

Customisation and Numbering.

Seal can be customised up to 20 characters on a line.

Sequenced numbering up to 12 digits

Logos and special printing can be reproduced on request.

### Colors

Standard: ORANGE

Available on Request = Red / Green / Yellow / etc. (Other Colours available on request)

### UPDATE REQUIRED

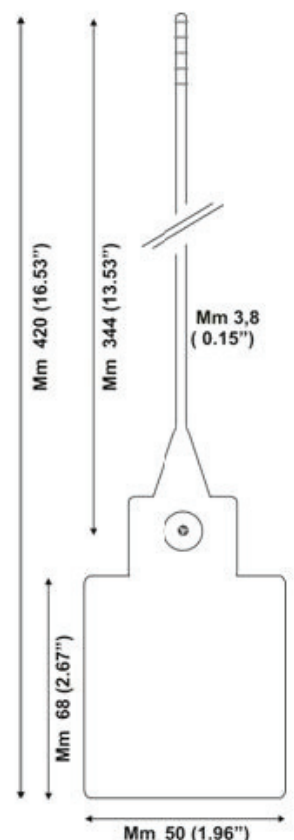
Packaging

Carton Dimensions, Weight, and Numbers:

Seals 2mm:

56cm x 24cm x 16cm, 3.2 kgs, Mats of 10, Boxes of 1000.

Gross Weight 3.5 kgs



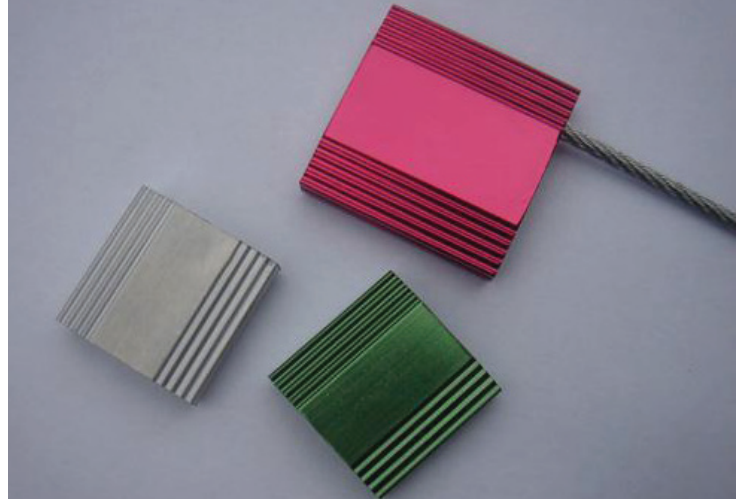
# ALUMINIUM, ZINC CAST, and STAINLESS STEEL CABLE SEALS for VALVE LOCKOUT FROM PRO - LOCK

## The New Generation of Security Seals Cable Lock ( No “break-off” Key Required)

PR-MCC250-300 ( Self Coloured )  
PR-MCR250-300 ( Red )  
PR-MCG250-300 ( Green )

PR-MCC250-500 ( Self Coloured )  
PR-MCR250-500 ( Red )  
PR-MCG250-500 ( Green )

PR-MCC250-1M ( Self Coloured )  
PR-MCR250-1M ( Red )  
PR-MCG250-1M ( Green )

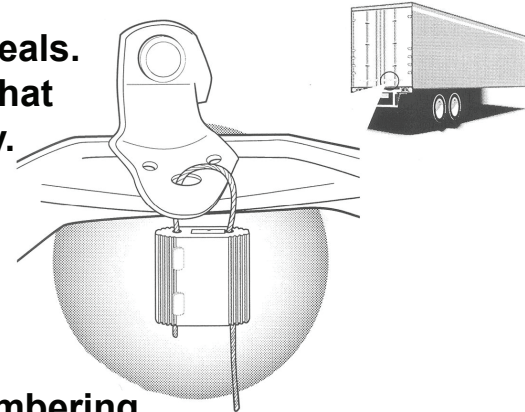


Cable Lock, 300, 500 or 1Mmm long, 2.5mm cable dia, aluminum multi-purpose, cable seal. - Steel locking mechanism, and steel wire. - sequentially numbered, and marked ‘Pro-lock’ SELF COLOURED, RED or GREEN

### Heavy Duty Pull-Through Cable Seals

These are multi-purpose, versatile, heavy duty cable seals. They are built tough with a steel locking mechanism, that provides the user with a high level of physical security.

The steel wire is 2.5mm diameter, in various lengths to fit countless types of applications.



- # Laser marking of company logo's and sequential numbering
- # US Customs approved & HM Customs Accepted
- # Available in cable sizes : 2.0mm, and 2.5mm
- # Optional : Longer length cable available
- # Strong metal construction. Steel cable and rust proof aluminium or stainless steel bodies
- # Very suitable for transportation security applications
- # Very competitive pricing

Valve Lockout - Containers - Tanks - Drums - Boxes - Cash bags - etc.  
Note: For Valve Lockout, first consider the Pro-Lock Valve Lockout System

# ZINC CAST CABLE SEALS

## for VALVE LOCKOUT FROM PRO - LOCK

PR-TB16-900ML

Self Locking, 0.9M long galvanized cable, 1,6mm cable dia, Corrosion resistant, zinc casting body, self locking, (LIGHT GREEN), sequentially numbered, and marked "Pro-lock



### Heavy Duty Pull-Through Cable Seals

These are multi-purpose, versatile, heavy duty cable seals. They are built tough with a steel locking mechanism, that provides the user with a high level of physical security.

#Marked Pro-Lock

# US Customs approved & HM Customs Accepted

# Strong metal construction. Steel cable and zinc cast bodies

# Very suitable for transportation security applications

# Very competitive pricing

### Main Applications

Valve Lockout - Containers - Tanks - Drums - Boxes - Cash bags - etc.

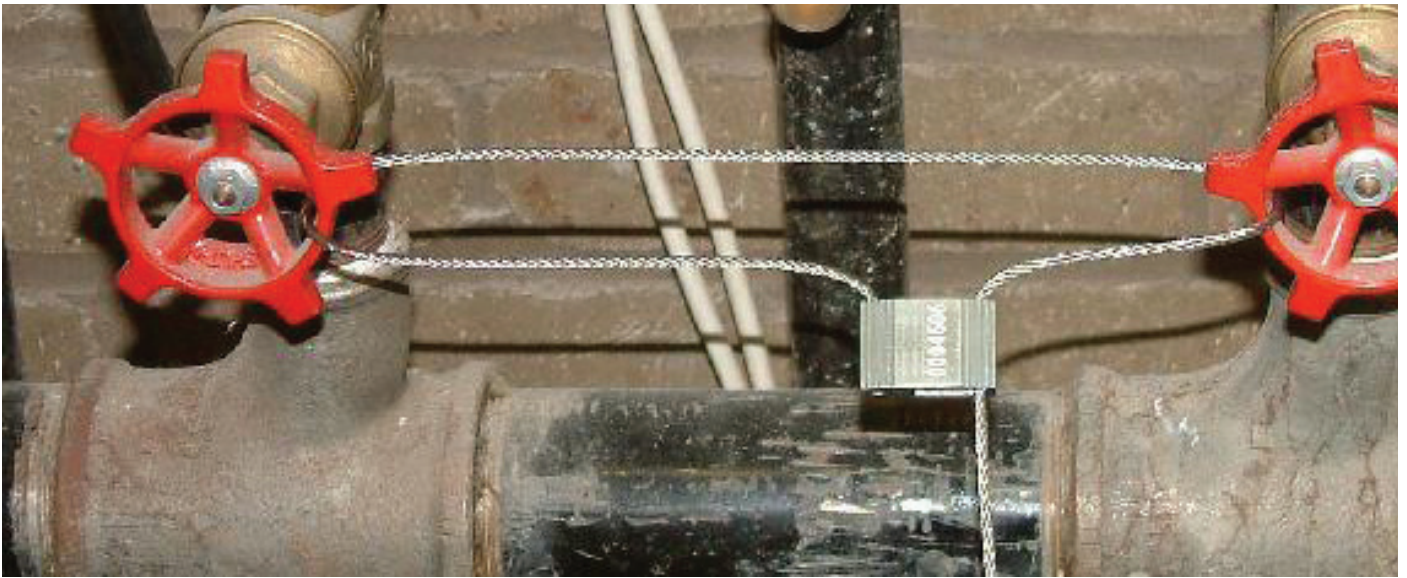
Note: For Valve Lockout, first consider the Pro-lock Valve Lockout System

# **STAINLESS STEEL CABLE SEALS for VALVE LOCKOUT FROM PRO - LOCK**

**The New Generation of Security Seals  
Cable Lock ( No “break-off” Key Required )**

**PR-RE250SS-1000**

**All Stainless Steel, 1M long, 2.5mm cable dia, multi-purpose, cable seal. Stainless Steel locking mechanism, and stainless steel wire. Self Coloured finish , sequentially numbered, and marked “Pro-Lock”**



## **Heavy Duty Pull-Through Cable Seals**

**These are multi-purpose, versatile, heavy duty cable seals. They are built tough with a stainless steel locking mechanism, that provides the user with a high level of physical security.**

**The steel wire is available in 2.5mm diameter and 1M length**

- # Laser marked “Pro-Lock and sequential numbering**
- # US Customs approved & HM Customs Accepted**
- # Available in cable sizes 2.5mm**
- # Strong metal construction. Steel cable and rust proof aluminium or stainless steel bodies**
- # Very suitable for transportation security applications**
- # Very competitive pricing**



# PRICE LIST 2017

## click here

<http://www.pro-lock.co.uk/ordering/>

Tel: +44 (0)1253-811333 • Fax: +44 (0)1253-813030  
E-mail: [info@pro-lock.co.uk](mailto:info@pro-lock.co.uk)

[www.pro-lock.co.uk](http://www.pro-lock.co.uk)



**PRO-LOCK Safety Limited.  
UNIT 4, THE OLD COAL YARD • HALL GATE LN  
PREESALL • LANCs  
FY6 0PJ • U.K.**

**Tel: +44 (0)1253-811333 • Fax: +44 (0)1253-813030  
E-mail: [info@pro-lock.co.uk](mailto:info@pro-lock.co.uk)**

**[www.pro-lock.co.uk](http://www.pro-lock.co.uk)**