

AMETEK Precision Motion Control is a leading global supplier of brushless DC motors and blower systems for a wide range of applications. AMETEK's design expertise, exceptional customer service and state-of-the-art ISO 9001-2008 manufacturing enable AMETEK to provide high quality custom design in cost-effective packages.

AC Input Brushless DC Blowers (UL, CSA, ISO 9001-2008)

120 or 240 VAC brushless blower with high flow fan system. Blower offers a fan system that can be used for either vacuum or pressure. The backward curved centrifugal impellers of the working air provide high efficiency operation. These blowers are suitable for use in 0-50°C. The drive system has a rectifier/filter network, a commutation controller and brushless DC motor. The drive system in the Bypass configuration has a cooling fan. In the Thru Flow configuration, the drive motor is in the working air stream. **Electrical (Analog Voltage or Pulse Width Modulation Control):** The control signal input to an optical isolator provides maximum safety for the low voltage signal circuit. Application of a zero to 10 VDC will control blower speed and air performance. Control can also be achieved by application of a pulse width modulated zero to 10 VDC square wave at a frequency between 150 Hz and 400 Hz. It takes an increase in control voltage to restart the blower. **Mechanical (Screwdriver Adjustable):** Adjustment of a multiple-turn potentiometer controls blower speed and air performance. The blower performance will vary from the maximum shown on the curves to a minimum of a few inches of water.

- ▶ 5.7" Diameter Housing
- ▶ Maximum Pressure to 169 In. H₂O (Sealed)
- ▶ Maximum Air Flows to 268 CFM
- ▶ Electrical and Mechanical Control Versions

- Applications**
- ▶ Computer Peripherals
 - ▶ Material Handling
 - ▶ Air Samplers and Evacuators
 - ▶ Packaging Equipment
 - ▶ Photographic Hold Down
 - ▶ Business Machines, Printers, Collators
 - ▶ Air Beds
 - ▶ Vacuum Forming Equipment
 - ▶ Dental/Medical Evacuators
 - ▶ Sleep Assist Equipment
 - ▶ Fuel Cell
 - ▶ Textile Machines
 - ▶ Drying Equipment

- Design Features**
- ▶ UL Component Recognized
 - ▶ CSA and TUV Certified
 - ▶ Adjustable Air Performance
 - ▶ Thermal Protection/Locked Rotor Protection
 - ▶ Separation of Cooling Air and Working Air in Bypass Configuration
 - ▶ Compact Size
 - ▶ Long Life
 - ▶ Low Noise to Power Ratio
 - ▶ Working Air Is the Cooling Air in the Thru Flow Configuration



Stock No.	Mfr.'s Type*	Overall Height (In.)	Output Tube Dia. (OD) (In.)	UL Type	Stage	VAC	Max. Amps	Watts	Max. Pressure (In. H ₂ O) Sealed	CFM (2nd Orifice)	Control Type	Config.	Filter Mfr.'s Type	EACH
70097998	116630-06	5.0	1.25	A	Two	120	4.5	250	50	66	Electrical	Thru Flow	551733001	796.83
70331338	116630-03	4.1	1.25	A	Two	120	4.5	250	50	66	Electrical	Thru Flow	—	751.10
70097987	116632-06	7.6	1.25	B	Three	120	4.5	250	81	66	Mechanical	By Pass	551733001	856.05
70097988	116634-03	6.0	1.25	B	Single	120	4.0	250	30	76	Mechanical	By Pass	551733001	721.46
70097989	116640-02	6.0	1.25	B	Single	120	4.0	250	31	76	Electrical	By Pass	551733001	729.04
70097985	116636-03	7.2	1.75	B	Two	120	4.5	250	51	104	Mechanical	By Pass	551692001	780.52
70097986	116642-03	7.2	1.75	B	Two	120	4.5	250	48	90	Electrical	By Pass	551692001	788.42
70097984	116643-03	6.2	1.75	B	Single	120	4.0	250	26	131	Electrical	By Pass	551692001	717.94
70097991	117417-01	7.9	1.25	H	Three	120	9.0	800	122	76	Electrical	By Pass	551733001	1147.64
70097992	117418-01	7.9	1.25	H	Three	120	9.0	800	122	76	Mechanical	By Pass	551733001	1139.55
70097994	119103-01	7.4	1.75	H	Two	120	8.0	800	78	131	Electrical	By Pass	551692001	1049.59
70097995	119104-01	7.4	1.75	H	Two	120	8.0	800	78	131	Mechanical	By Pass	551692001	1128.80
70097990	119101-01	6.3	1.75	H	Single	120	7.0	800	39	140	Electrical	By Pass	551692001	1093.30
70097993	119102-01	6.3	1.75	H	Single	120	7.0	800	39	140	Mechanical	By Pass	551692001	1118.03
70097996	119105-01	6.6	2.75	H	One	120	8.5	800	30	210	Electrical	By Pass	—	1158.40
70363863	117630-03	4.1	1.25	D	Two	240	2.6	400	49	63	Electrical	Thru Flow	—	787.73
70097933	117641-05	7.6	1.75	E	Three	240	3.5	400	69	82	Electrical	By Pass	551692001	1121.26
70097999	117459-05	8.5	1.25	E	Four	240	4.0	400	88	60	Electrical	By Pass	551733001	1816.18
70097941	117416-03	7.8	1.25	K	Three	240	10.0	1200	169	87	Mechanical	By Pass	551733001	999.43
70097905	117629-52 ✓	4.2	1.25	D	Single	240	2.5	400	31	67	Electrical	Thru Flow	551733001	789.27
70097918	116638-58 ✓	5.7	1.25	E	Three	120	5.0	250	81	56	Electrical	By Pass	551733001	779.16
70097917	116637-53 ✓	5.7	1.75	E	One	120	5.0	250	26	130	Mechanical	By Pass	551692001	800.36
70097906	117632-52 ✓	7.7	1.25	E	Three	240	3.5	400	72	65	Mechanical	By Pass	551733001	898.43
70097911	117638-53 ✓	7.7	1.25	E	Three	240	3.5	400	72	65	Electrical	By Pass	551733001	837.07
70097907	117634-51 ✓	6.0	1.25	E	Single	240	2.5	400	30	70	Mechanical	By Pass	551733001	875.91
70097912	117640-51 ✓	6.0	1.25	E	Single	240	2.5	400	30	70	Electrical	By Pass	551733001	884.31
70097908	117635-53 ✓	7.6	1.75	E	Three	240	3.5	400	61	90	Mechanical	By Pass	551692001	898.30
70097913	117641-51 ✓	7.6	1.75	E	Three	240	3.5	400	61	90	Electrical	By Pass	551692001	850.01
70097909	117636-51 ✓	7.3	1.75	E	Two	240	3.0	400	45	95	Mechanical	By Pass	551692001	887.11
70097915	117642-52 ✓	7.3	1.75	E	Two	240	3.0	400	45	95	Electrical	By Pass	551692001	895.50
70097910	117637-51 ✓	6.2	1.75	E	Single	240	2.5	400	24	106	Mechanical	By Pass	551692001	875.91
70097916	117643-52 ✓	6.2	1.75	E	Single	240	2.5	400	24	106	Electrical	By Pass	551692001	884.31
70097908	117415-51 ✓	7.8	1.25	K	Three	240	10.0	1200	169	87	Electrical	By Pass	551733001	1253.70
70097899	117416-51 ✓	7.8	1.25	K	Three	240	10.0	1200	169	87	Mechanical	By Pass	551733001	1245.29
70097904	119155-52 ✓	6.6	2.75	K	One	240	9.0	1200	45	268	Electrical	By Pass	—	1243.68
70097903	119154-51 ✓	7.3	1.75	K	Two	240	9.5	1200	111	140	Mechanical	By Pass	551692001	1213.92
70097902	119153-51 ✓	7.3	1.75	K	Two	240	9.5	1200	111	140	Electrical	By Pass	551692001	1217.45
70097900	119151-51 ✓	6.3	1.75	K	Single	240	7.5	1200	56	180	Electrical	By Pass	551692001	1231.31
70097901	119152-52 ✓	5.1	1.75	K	Single	240	9.5	1200	56	180	Mechanical	By Pass	551692001	1222.90

*Order air filters separately SKUs 70097882 (551733) or 70097883 (551692). ✓ RoHS.

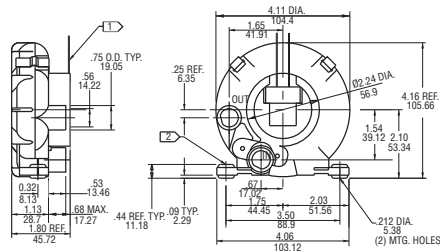
Regenerative Blowers

Minispiral and Spiral Blowers SE and SL Series

- Features:**
- ▶ Manufactured in the USA — ISO 9001 and NAFTA Compliant
 - ▶ Maximum Ambient: 40°C
 - ▶ Shaded Pole Motor with Ball Bearings
 - ▶ B10 Bearing Life: 30,000 Hours

Regenerative Blowers DR Series

- Features:**
- ▶ Manufactured in the USA — ISO 9001 and NAFTA Compliant
 - ▶ Standard Induction Motor: TEFC
 - ▶ Cast Aluminum Blower Housing, Impeller, Cover Inlet and Outlet Internal Muffling



Stock No.	Mfr.'s Type	Voltage (VAC)	Frequency (Hz)	RPM	Insulation Class	Full Load (Amps)	Locked Rotor (Amps)	Weight (Lbs.)	EACH
70226383	SE2B21 (081901)	110/115	50/60	2850/3400	B	0.17/0.14	0.17/0.15	1.9	388.61
70097979	SE3B21/036283	220/230	50/60	2850/3400	B	0.07/0.07	0.08/0.08	1.9	599.61
70097943	SL2P2/036000	115	50/60	—	B	2.45/3.60	10.00	27.0	2355.20
70097944	DR454R72M/080480	230/460	50/60	—	F	18.00/9.00	84.00/42.00	60.0	2260.70
70097951	DR505AS72M/037543	230/460	Three-60	—	F	6.80/3.40	38.00/19.00	82.0	2272.72
70097950	DR656CK72X/080582	230/460	Three-60	—	F	11.40/5.70	94.00/47.00	110.0	3229.21