



EASY AND SECURE INTERNET-BASED TELESERVICE!

REX 300 – Ethernet-Router

For all popular Internet access services and networks
Analog | WAN | GPRS | EDGE | UMTS | HSDPA (3G)

REX 300 – ETHERNET-ROUTER

REX 300 industrial routers are designed to enable you to establish a simple and secure connection between your remote servicing computer and your equipment in the field. Moreover, REX 300 routers can be easily integrated into S7 systems, and an adapter makes it possible to easily mount them on DIN rails so that you will have a wide array of options to accompany the transparent data communications characterizing these units.

Advantages of REX 300 routers used in conjunction with the myREX24 VPN portal:

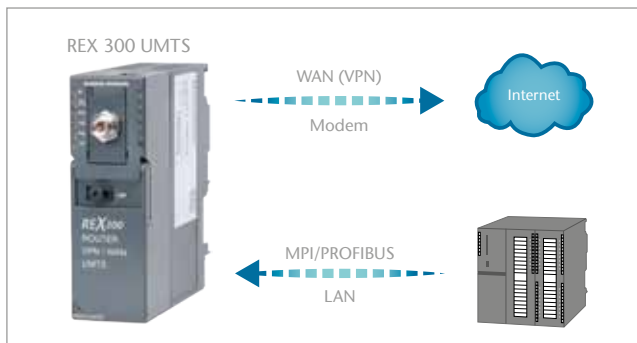
1. Quickly and easily configure your REX 300 router
2. Obtain a clearly laid out view of your routers in the field
3. Direct and secure VPN connection through the portal

FEATURES

- Remote access to Ethernet-capable devices such as PLCs, HMIs, IP cameras, etc.
- Easy and quick configuration using the myREX24 VPN portal
- Integrated firewall
- I/O manager for reading and archiving a maximum of 256 PLC variables
- Redundant management of multiple Internet interfaces (e.g., WAN, UMTS, etc.)
- Directly connect S7-MPI/PROFIBUS devices*
- Service RS-232/RS-485 devices remotely via Internet*
- USB port for firmware updates** and setting up configurations
- A plugged-in USB stick can be shared on the network
- Free S7-MPI/PROFIBUS driver
- Visualization via REX 300 Toolbox
- Use your own scripts

* Depends on the specific model

** Firmware updates should be applied using the REX 300 web interface so that configuration settings will be retained



REX 300 usage options



For all popular Internet access services and networks: Analog | WAN | GPRS | EDGE | UMTS | HSDPA (3G)

Our intelligent mediation server, which features integrated user and REX 300 management capabilities, makes both user accounts and REX 300 accounts for automation systems available on its portal.

Depending on the configuration used, equipment can remain constantly logged in to the portal or a user can log it in and out as required. Whether the customer's provider assigns dynamic or static IP addresses is of no consequence, as connections to the portal are always established from the corresponding remote servicing computer and from the relevant equipment (as a result, an outgoing connection will be active on both sides). This also has the advantage that firewalls can be configured on both ends in such a way that attempts to establish a connection from the Internet will normally be blocked, thus providing excellent protection against unauthorized access.

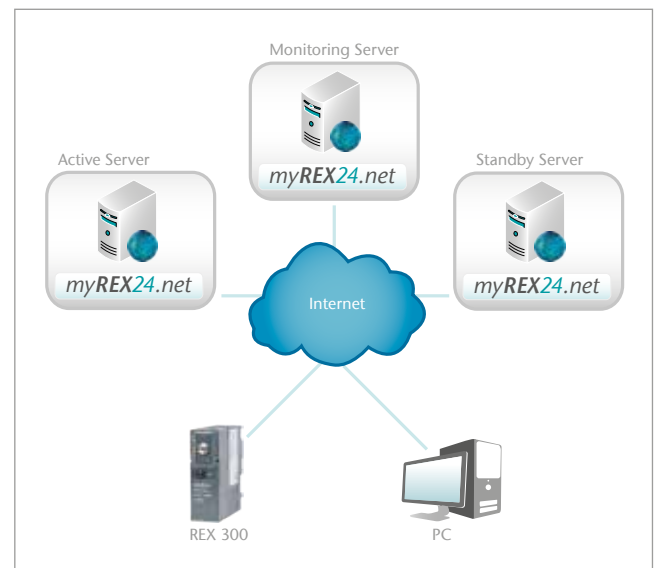
Data is transferred via secure VPN connections using the OpenVPN security protocol, and a free client program (shDIALUP) that automatically handles authentication is used to log in to the myREX24 VPN portal.

Connections to equipment can be established in mere seconds. Moreover, the engineering software used makes it possible to remotely service components such as S7 PLCs, drives, control panels, and industrial PCs with complete transparency.

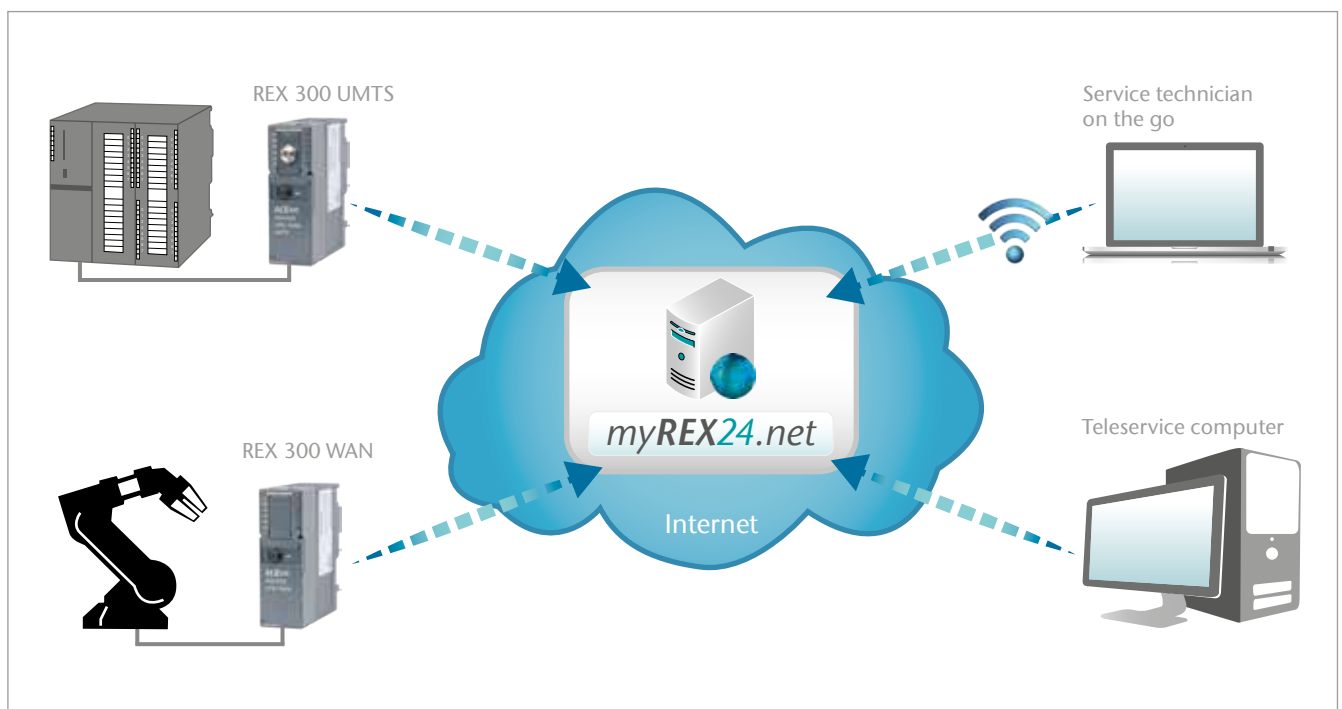
The actual portal is hosted at a high-performance data center. A redundant connection with 365/24/7 monitoring guarantees an average annual network availability of at least 99%.

THE ADVANTAGES

- Access via www.myREX24.net
- shDIALUP software for easily establishing a connection from your computer
- Configure your REX 300 router on the myREX24 VPN portal
- Configurations can be downloaded
- User and permissions management system
- SMS text message wake-up with shSMS via myREX24
- Reports on every single connection that is established
- WEB2go makes it possible to keep an eye on your equipment at all times while on the go by using a smartphone or tablet computer



Redundant server architecture



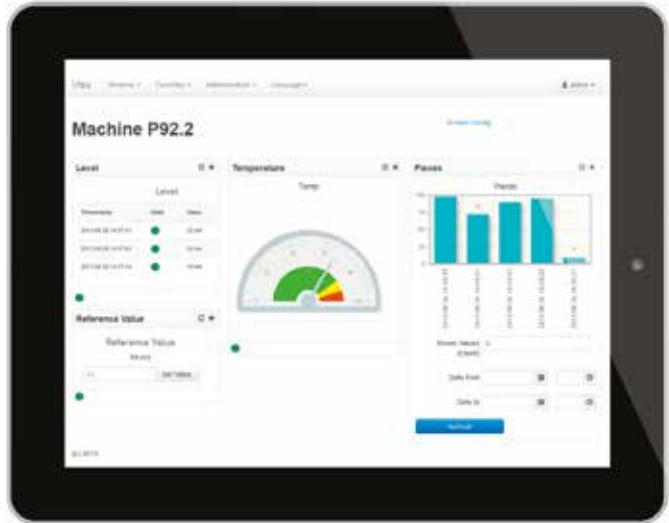
Keep an eye on your equipment at all times

REX 300 TOOLBOX

REX 300 Toolbox is designed to enable you to access a REX 300 unit's system functions in exactly the way you need. In addition, it can be used to create simple platform-independent visualization interfaces that can be accessed via myREX24, as well as locally.

FEATURES

- Compatible automation protocols:
 - S7 ISO-on-TCP (RFC 1006)
 - Modbus TCP
 - MPI / PROFIBUS
- Available variable displays:
 - List display
 - Gauge
 - Bar/line graph
 - Input field for changing variables
- Monitoring system with SMS (text message) or e-mail alarm
- A REX 300 USB stick with Toolbox and documentation preloaded is available
- Permissions management (read, write, etc.)

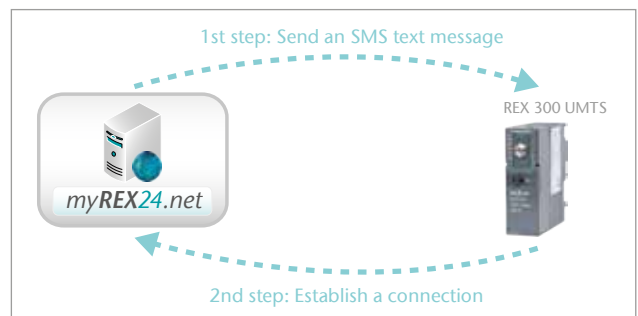


shSMS

Effective immediately, you can also use myREX24 to activate REX 300 GSM devices with an SMS text message.

FEATURES

- Cost control
- Activate connections from myREX24
- Easy to use
- Phone number is stored in the configuration



WEB2go

WEB2go is designed to enable you to monitor your equipment even when you are on the go by allowing you to retrieve the most important equipment data on your smartphone or tablet computer. WEB2go works perfectly with REX 300 Toolbox visualization interfaces.

FEATURES

- Easy access through a standard web browser
- No additional software needed
- Ideal for mobile remote diagnostics via smartphones or tablet computers
- HTTPS encryption
- Monitoring and visualization



ORDERING DATA | INFORMATION

Overview of REX 300 models:

Order No.	VPN	LAN	WAN	Analog	GPRS/EDGE	UMTS (3G)	MPI/PROFIBUS	Serial	USB
700-872-MDM02	x	x	x	x			x	x	x
700-872-UMT02	x	x	x		x	x	x	x	x
700-873-WAN02	x	x	x				x	x	x
700-874-WAN02	x	x	x						x
700-874-UMT02	x	x			x	x			x

REX 300 Ordering Data	Order No.
REX 300 VPN + WAN, PROFIBUS, analog + serial interface (comes with telephone cable, Ethernet cable, and Quick Start Guide)	700-872-MDM02
REX 300 VPN + WAN, PROFIBUS, UMTS + serial interface (comes with Ethernet cable and Quick Start Guide)	700-872-UMT02
REX 300 VPN + WAN + serial interface, PROFIBUS, without modem (comes with Ethernet cable and Quick Start Guide)	700-873-WAN02
REX 300 eco, VPN + WAN, without MPI port, without modem (comes with Ethernet cable and Quick Start Guide)	700-874-WAN02
REX 300 eco, VPN + UMTS, without MPI port (comes with Ethernet cable and Quick Start Guide)	700-874-UMT02
REX 300 accessories	
REX 300 USB stick with Toolbox and documentation preloaded (8 GB)	700-879-USB01
Mounting rail adapter for DIN rail	700-390-6BA01
Adapter cable serial interface (RS232) , for REX 300, 3-m, 9-way male connector	700-879-1VK11
Adapter cable serial interface (RS232) , for REX 300, 3-m, 9-way male connector	700-879-1VK21
Power plug, 24-V , for SSW7, NETLink®, and REX 300 devices	700-751-SNT01
Stationary quadband antenna , GSM/UMTS, 2 dBi, 5-m cable	700-751-ANT11
Magnetic base quadband antenna , GSM/UMTS, 2 dBi, 2.5-m cable	700-751-ANT12
Self-adhesive triband antenna , GSM/UMTS, 3-m cable	700-751-ANT13
Portable quadband antenna with knee-joint , GSM/UMTS, 2 dBi	700-751-ANT14

CONFIGURATION SERVICE FOR YOUR REMOTE MACHINE ACCESS NEEDS

We now offer a wide variety of services designed to further enhance your experience with the REX 300 family of Ethernet routers.

For more information, or to schedule an appointment, please contact us at: +49 9135 7380-0 or vertrieb@helmholz.de

OUR SERVICES

- Configuration service for REX 300 Ethernet routers
- On-site training at your location, including guided configuration of defined equipment

ORDERING DATA

myREX24.net Ordering Data	Order No.
myREX24.net free Access account for myREX24.net with one free active connection* and one WEB2go connection, plus the option of creating ten REX 300 devices for free and using ten free SMS text messages (once only). <ul style="list-style-type: none"> • Number of users allowed: 250 • Number of user groups allowed: 250 • Number of devices allowed: 250 (additional charges apply starting with the 11th device) • Number of device groups allowed: 250 • Number of active connections allowed: 1 (additional charges apply starting with the 2nd active connection) 	
myREX24.net REX 300 One-time fee for each additional REX 300 router created after the 10th one.	800-870-REX01
myREX24.net ac1 License for 1 additional active connection*; expires 1 year after the invoice date.**	800-870-ACT01
myREX24.net ac3 License for 3 additional active connections*; expires 1 year after the invoice date.**	800-870-ACT03
myREX24.net ac5 License for 5 additional active connections*; expires 1 year after the invoice date.**	800-870-ACT05
myREX24.net ac10 License for 10 additional active connections*; expires 1 year after the invoice date.**	800-870-ACT10
myREX24.net WEB5 License for 5 additional WEB2go connections; expires 1 year after the invoice date.**	800-870-WEB05
myREX24.net WEB10 License for 10 additional WEB2go connections; expires 1 year after the invoice date.**	800-870-WEB10
myREX24.net WEB25 License for 25 additional WEB2go connections; expires 1 year after the invoice date.**	800-870-WEB25
myREX24.net WEB50 License for 50 additional WEB2go connections; expires 1 year after the invoice date.**	800-870-WEB50
myREX24.net shSMS 50 SMS messaging package with 50 messages	800-870-SMS05
myREX24.net shSMS 100 SMS messaging package with 100 messages	800-870-SMS10
myREX24.net shSMS 200 SMS messaging package with 200 messages	800-870-SMS20
myREX24.net shSMS 300 SMS messaging package with 300 messages	800-870-SMS30
myREX24.net shSMS 500 SMS messaging package with 500 messages	800-870-SMS50

* Active connections

The number of active connections is the number of connections between a user and an REX 300 device.

In other words, all users and REX 300 devices can be connected online to myREX24, but an active connection only counts the moment a user connects to an REX 300 device.

** This license will be automatically renewed for one year unless renewal is cancelled at least four weeks before the license expires.

FOLLOW US ON

