



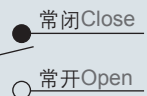
## CFS 脚踏开关 Foot Switch

### 特征 Features

- 塑胶系列外壳
- 金属系列外壳
- Metal series shell
- Plastic series shell

### 接点型式 Contact Form

共同端子  
Carry the son together



### 特性 Features

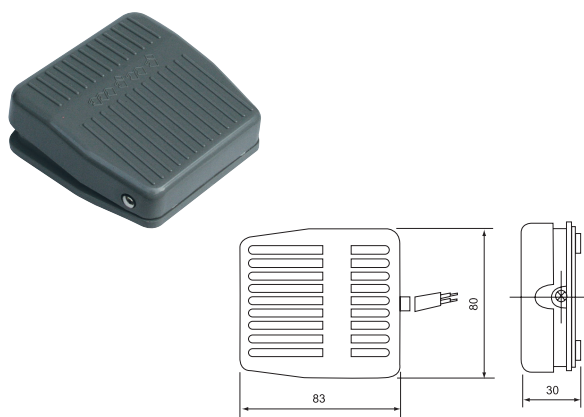
种类 Designation	型式 Model	负荷 Rating	微动开关形式 Type of switch enclosed & contact arrangement	电缆种类/长度 Cable type / length	接点 Contact	动作压力 Action force	外壳材质 Material of Rind
标准型 复归式 Standard type Momentary Action	CFS-101	10A 250VAC	进口V型微动开关 Micro-switch Momentary	0.75mm <sup>2</sup> ,3C/0.5 meter(米),1 meter(米)~3 meter(米)	1A1B	1.2kg	塑胶 Plastic
	CFS-102	15A 250VAC	CM1704	0.75mm <sup>2</sup> ,3C/1 meter(米),1.5 meter(米)~2 meter(米)	1A1B	1.1kg	
	CFS-3	15A 250VAC	进口V型微动开关 Micro-switch Momentary	0.75mm <sup>2</sup> ,3C/0.5 meter(米),1 meter(米)~3 meter(米)	2A2B	1.2kg	铝合金 Aluminum Cast
	CFS-3S	15A 250VAC	CM1704	0.75mm <sup>2</sup> ,3C/1 meter(米),1 meter(米)~3 meter(米)	2A2B	1.1kg	
标准型 交替式 Standard type Alternate action	CFS-105	6A 250VAC	进口交替式开关 Imported alternative switch	0.75mm <sup>2</sup> ,2C/1 meter(米),1 meter(米)~2 meter(米)	PUSH ON PUSH OFF	2kg	塑胶 Plastic
	CFS-106	6A 250VAC	日制交替式开关 Imported Micro-switch	0.75mm <sup>2</sup> ,3C/1 meter(米)	PUSH 1A PUSH 1B	1.5kg	
小型附 回定片 Mini foot switch Front end push	CFS-201	10A 250VAC	进口V型微动开关 Micro-switch Momentary	0.5mm <sup>2</sup> ,3C/1 meter(米)~3 meter(米)	1A1B	0.7kg	塑胶 Plastic
	CFS-01	10A 250VAC		0.5mm <sup>2</sup> ,3C/1 meter(米)~3 meter(米)	1A1B	0.7kg	
	CFS-1	10A 250VAC		0.5mm <sup>2</sup> ,3C/1 meter(米)~3 meter(米)	1A1B	0.9kg	铁壳 Iron
护盖型 Protective guard foot switch	CFS-302	15A 250VAC	CM1704	附电缆固定头, 不附电缆 Accessory: Cable gland (No cable)	1A1B	3.2kg	铝合金 Aluminum Cast
	CFS-305	6A 250VAC	进口交替式开关 Imported alternative switch		PUSH ON PUSH OFF	3.1kg	
	CFS-306	6A 250VAC	日制交替式开关 Imported Micro-switch		PUSH 1A PUSH 1B	3.5kg	
	CFS-502	15A 250VAC	CM1704		1A1B	3.2kg	
	CFS-602	15A 250VAC	按钮弹簧式 Button spring type		2*1A1B	2.8kg	
	CFS-702	15A 250VAC	CM1704		2*1A1B	3.2kg	
大型 Large type	CFS-402	15A 250VAC	CM1704	1A1B	3.2kg		
	CFS-802	15A 250VAC	CM1704	2*1A1B	3.2kg		

注: CFS3, CFS4系列防水型专用, 尾数加“R”。

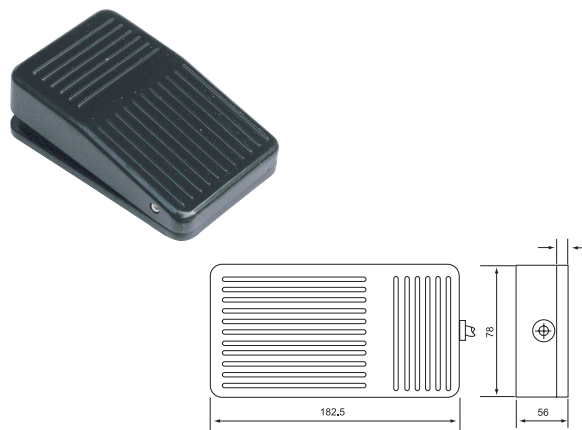
NOTES: 1, Add "R" for waterproof, available in CFS3 & CFS4.

## 外观和尺寸 Appearance and Dimension

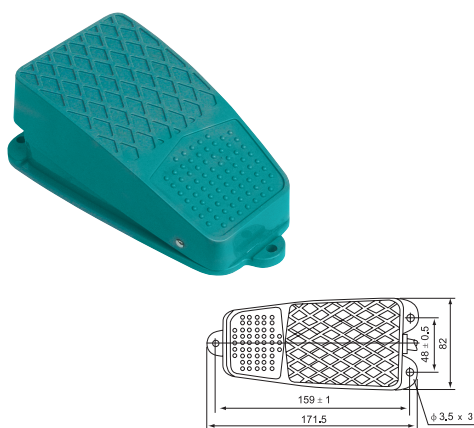
CFS-201 202



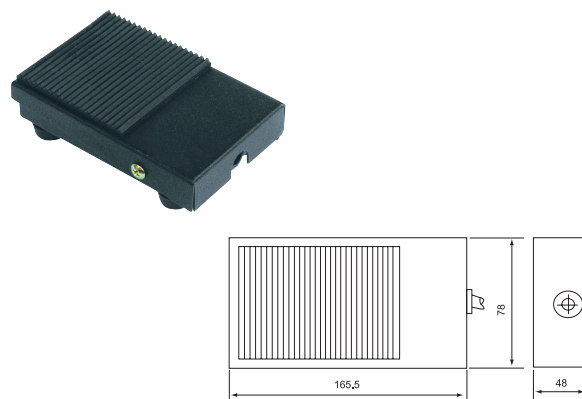
CFS-01



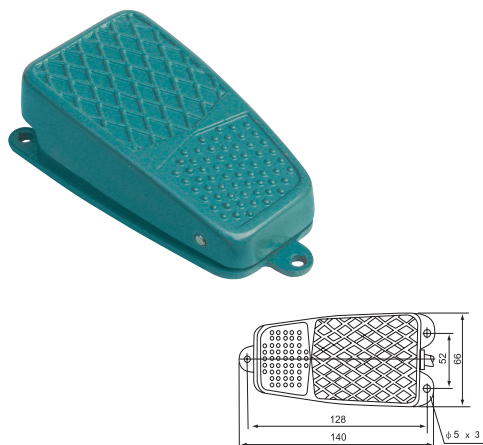
CFS-101 102 105



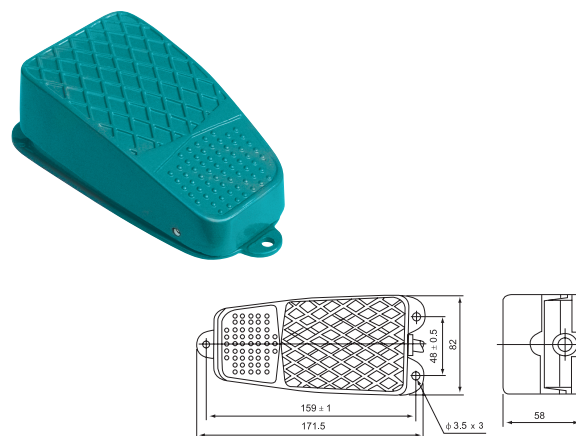
CFS-1



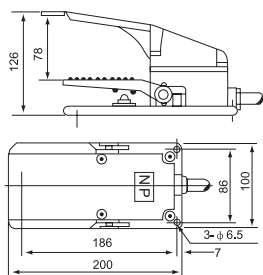
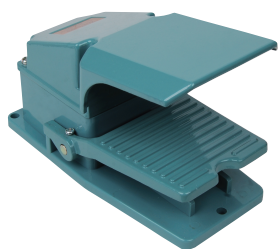
CFS-2



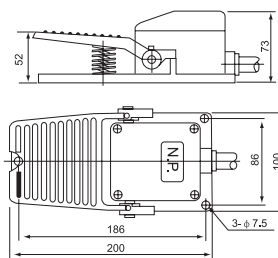
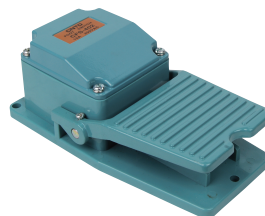
CFS-3 3S



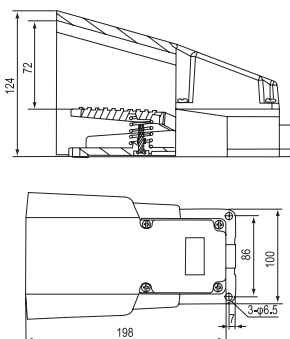
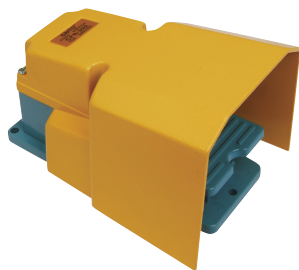
CFS-302



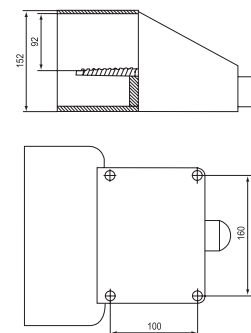
CFS-402



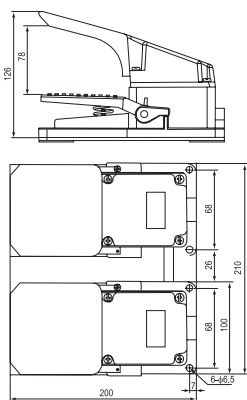
CFS-502



CFS-602



CFS-702



CFS-802

