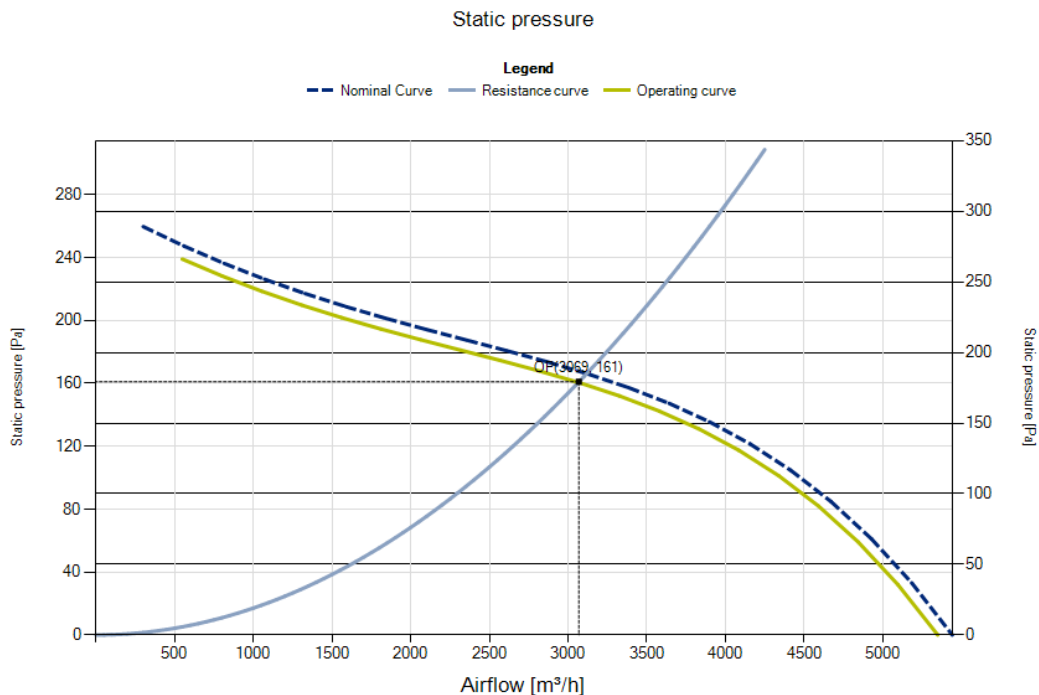


R10R-40APS-ES50B-02C01

EC Axial Fans with with guard grill with guard grill

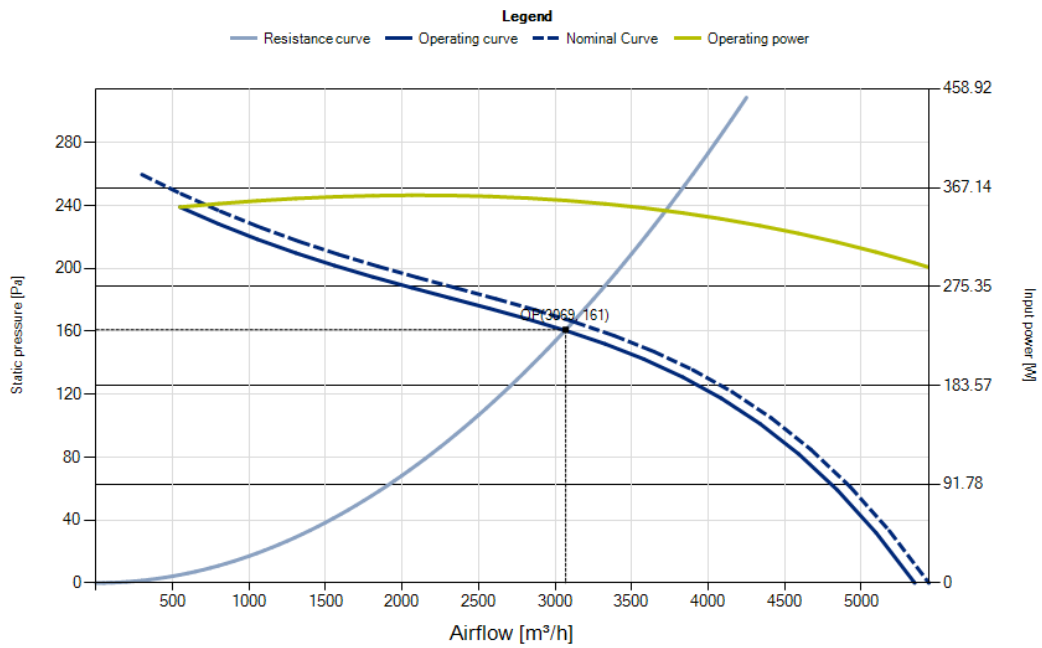
Ordering code: 0310-4-0071

Operating Point		Nominal data		Erp Data	
Air flow [m3/h]	3069	Phase [~]	1	Overall efficiency [%]	43.1
Static pressure [Pa]	161	Voltage [V]	230 / 230	Measurement cat.	A
Density [kg/m3]	1.2	Voltage range [V]	230-240	Efficiency category	static
Total pressure [Pa]	189	Frequency [Hz]	50 / 60	Efficiency grade N	52.4
Rotation speed [1/min]	1495	Input power [W]	320 / 320	Variable speed drive	INTEGRATED
Input power [W]	356	Input current [A]	2.15 / 2.15	Power input [kW]	0.34
Current [A]	2.38	Nominal speed [rpm]	1520 / 1520	Airflow [m3/h]	3069
Total efficiency [%]	45	MinimalSpeed [rpm]	200	Pressure drop [Pa]	161
Static efficiency [%]	39	MaxControlVoltage [V]	9.5	Rotational Speed [rpm]	1504
Sound power Outlet [dB]	76	MinControlVoltage [V]	1.2	Specific ratio	1.00
Weighted sound power Outlet [dB(A)]	70	Min. ambient temp. [°C]	-25		
Sound power inlet [dB]	75	Max. ambient temp. [°C]	65		
Weighted sound power inlet [dB(A)]	69	Protection class	IP54		
Sound pressure [dB]	59	Insulation class	130		
Weighted sound pressure [dB(A)]	57	Capacitor [μF/450V]	N / A		
		K. Value	N / A		
		Connection	N / A		
		Weight [Kg]	6.2		

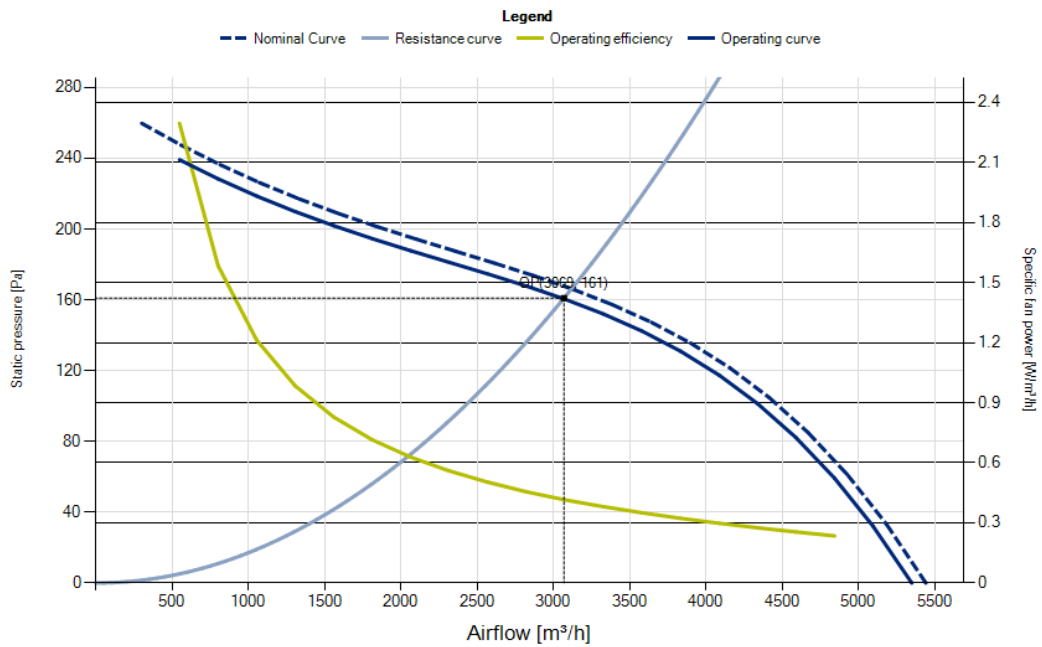


Measured according to ISO 5801, installation type A. Measured in full bell mouth without guard grill.

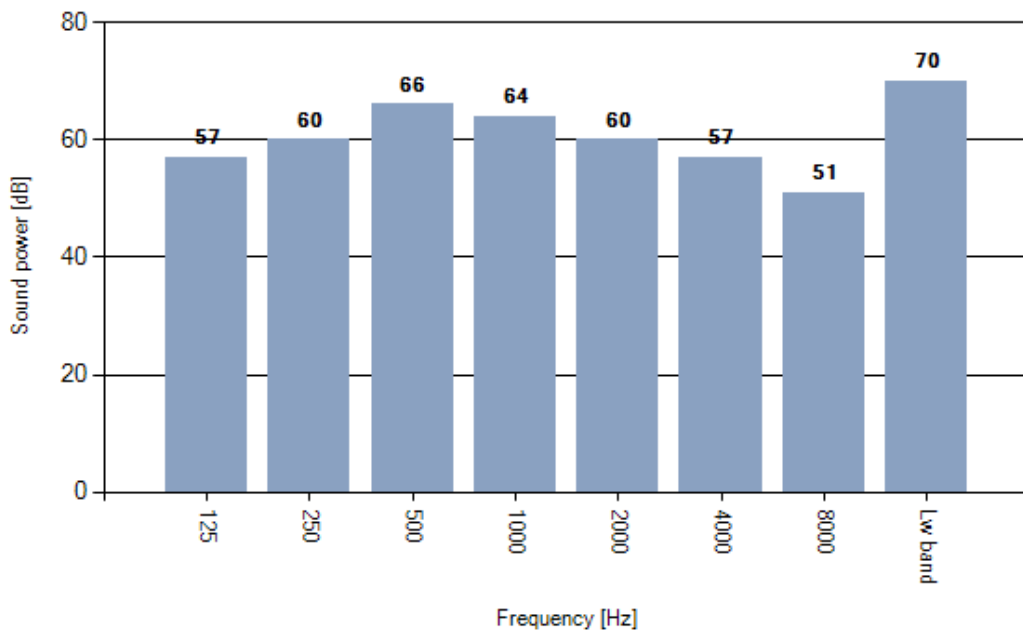
Input power



Specific fan power

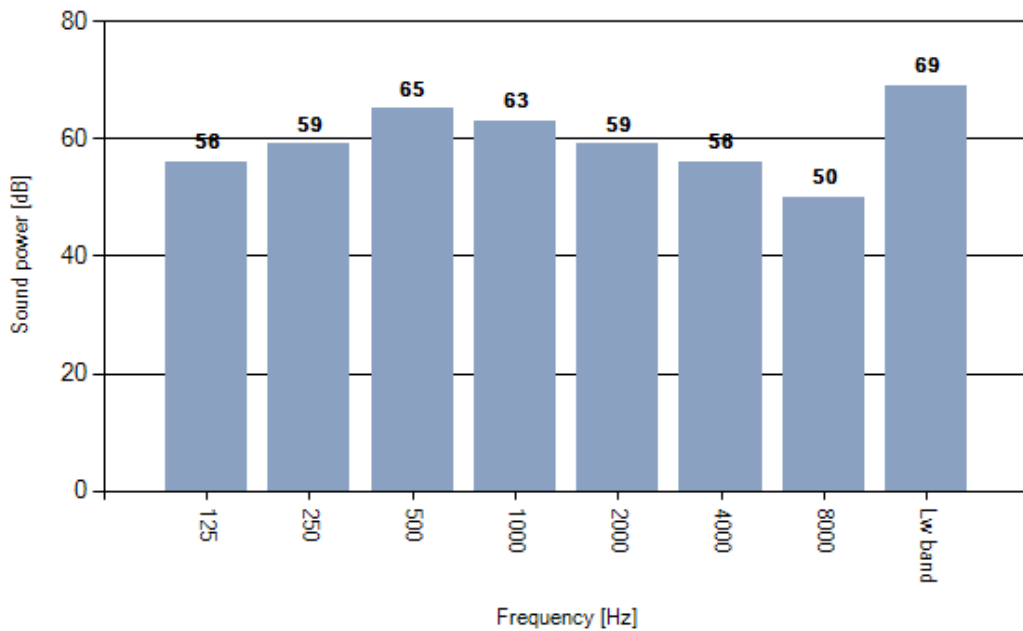


Weighted octave sound power spectrum Outlet



Measured according to ISO 3744 and ISO 13347, installation type A. Measured in full bell mouth without guard grill. The value given may vary according to actual installation of the unit.

Weighted octave sound power spectrum Inlet



Measured according to ISO 3744 and ISO 13347, installation type A. Measured in full bell mouth without guard grill. The value given may vary according to actual installation of the unit.