



TS 016-03Y-M20

- 3 Cable entry M 20 x 1.5
- Metal enclosure
- 3 Contacts
- 67 mm x 105 mm x 43 mm (basic component)

Data

Ordering data

Product type description	TS 016-03Y-M20
Article number (order number)	101168064
EAN (European Article Number)	4030661220420
eCl@ss number, version 12.0	27-27-06-01
eCl@ss number, version 11.0	27-27-06-01
eCl@ss number, version 9.0	27-27-06-01
ETIM number, version 7.0	EC000030
ETIM number, version 6.0	EC000030

Approvals - Standards

Certificates	cULus CCC
--------------	--------------

General data

Standards	EN IEC 60947-5-1
Working principle	mechanical
Slide form	Sphere
Housing material	Light-alloy diecast, paint finish
Housing coating material	painted
Gross weight	325 g

General data - Features

Number of normally closed (NC) 3

Mechanical data

Actuating element	Plunger
Mechanical life, minimum	5,000,000 Operations
Actuating angle	20 °
Actuating force	27 N
Contact opening	2 x 2.5 mm
Actuating speed, minimum	1 mm/min
Actuating speed, maximum	1 m/s
Note (Actuating speed)	Actuating speed with vertical actuating angle to switch axis

Mechanical data - Connection technique

Termination	Screw terminals M20 x 1.5
Cable section, maximum	2.5 mm ²
Note	All indications including the conductor ferrules.
Wire cross-section	13 AWG

Mechanical data - Dimensions

Length of sensor	43 mm
Width of sensor	67 mm
Height of sensor	116 mm
Diameter of the Plunger	6 mm

Ambient conditions

Degree of protection	IP65
Ambient temperature	-30 ... +90 °C

Ambient conditions - Insulation values

Rated insulation voltage U_i	400 V
--------------------------------	-------

Electrical data

Thermal test current	10 A
Utilisation category AC-15	400 VAC
Utilisation category AC-15	4 A
Switching element	Opener (NC)
Note (Switching element)	with double break
Switching principle	Slow action
Material of the contacts, electrical	Silver

Note

Note (General)	Actuation from the side of the plunger should be avoided, since this reduces the mechanical life of the position switch.
----------------	--

Ordering code

Product type description:

T(1) 016-(2)Y-(3)

(1)

S	Plunger S
2S	Telescopic plunger 2S
K	Offset roller lever K
2K	Tilt lever 2K
3K	Angle roller lever 3K
8H	Roller lever 8H
7H	Roller lever 7H
10H	Rod lever 10H
H	Roller lever H
4H	Spring rod lever on shaft 4H
2H	Leaf spring lever 2H
3H	Roller lever 3H
9H	Rod lever 9H
6H	Leaf spring lever 6H

(2)

12	1 NO contact/2 NC contacts
21	2 NO contacts/1 NC contact
03	3 NC contact
30	3 NO contacts

(3)

UE	Slow action with overlapping contacts
H	Slow action with staggered contacts
C	Magnetic blow-out

Pictures

Product picture (catalogue individual photo)



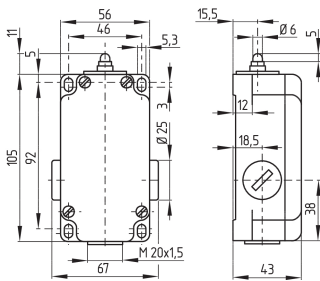
ID: kts16f01

| 915.5 kB | .jpg | 352.778 x 529.519 mm - 1000 x 1501 px - 72 dpi

| 66.2 kB | .png | 74.083 x 111.125 mm - 210 x 315 px - 72 dpi

| 47.7 kB | .jpg | 82.197 x 123.472 mm - 233 x 350 px - 72 dpi

Dimensional drawing basic component



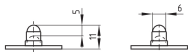
ID: 1t016g01

| 31.6 kB | .cdr |

| 9.1 kB | .png | 74.083 x 51.153 mm - 210 x 145 px - 72 dpi

| 179.1 kB | .jpg | 352.778 x 305.153 mm - 1000 x 865 px - 72 dpi

Dimensional drawing actuator

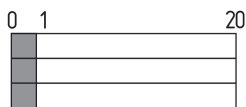


ID: 1t15sb01

| 1.5 kB | .png | 74.083 x 51.858 mm - 210 x 147 px - 72 dpi

| 25.9 kB | .jpg | 352.778 x 247.297 mm - 1000 x 701 px - 72 dpi

Switch travel diagram



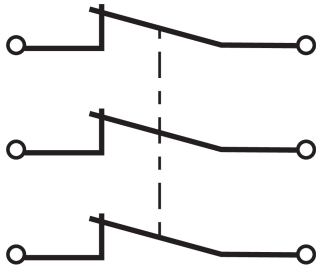
ID: kt016s07

| 18.3 kB | .cdr |

| 1.0 kB | .png | 74.083 x 23.636 mm - 210 x 67 px - 72 dpi

| 22.6 kB | .jpg | 352.778 x 112.889 mm - 1000 x 320 px - 72 dpi

Diagram



ID: k3o--k02
| 18.7 kB | .cdr |
| 65.3 kB | .jpg | 352.778 x 292.806 mm - 1000 x 830 px - 72 dpi
| 2.4 kB | .png | 74.083 x 61.383 mm - 210 x 174 px - 72 dpi

Operating principle



ID: 235sz01
| 14.1 kB | .cdr |
| 95.3 kB | .jpg | 352.778 x 1199.444 mm - 1000 x 3400 px - 72 dpi
| 1.8 kB | .png | 74.083 x 251.883 mm - 210 x 714 px - 72 dpi



Schmersal Canada Ltd., 29 Centennial Road, Unit 1, Orangeville, Ontario L9W 1R1 Canada

The details and data referred to have been carefully checked. Images may diverge from original. Further technical data can be found in the manual. Technical amendments and errors possible.

Generated on: 2024-06-19, 3:20 a.m.